



Eardley Crescent, SW5

£623 Per week

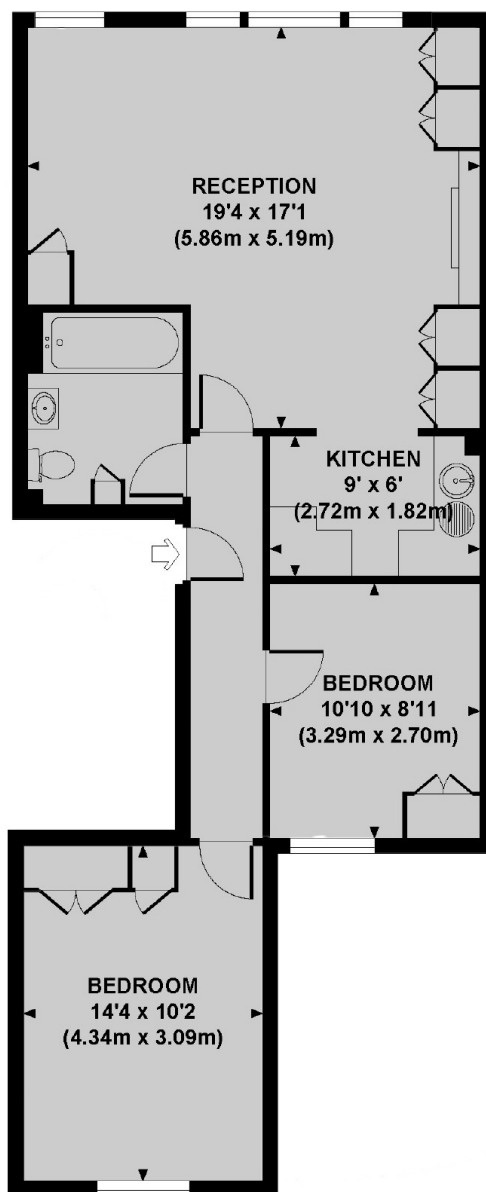
A well-presented two double bedroom apartment arranged over the second floor of a Victorian conversion, with high ceilings, wooden flooring and contemporary fittings.

The apartment is situated on a quiet Crescent close to the shops and cafes of Earls Court including Marks and Spencers, Starbucks coffee shop and a Tesco supermarket. The closest underground station is Earls Court.

Features

- Two Double Bedrooms
- Wooden Flooring
- Second Floor
- High Ceilings
- Victorian Conversion
- Earls Court Station

Eardley Crescent, London, SW5



SECOND FLOOR

Approx. gross internal area
709 Sq Ft. / 65.9 Sq M.