



St. Margarets Road, SE4

£1,600,000

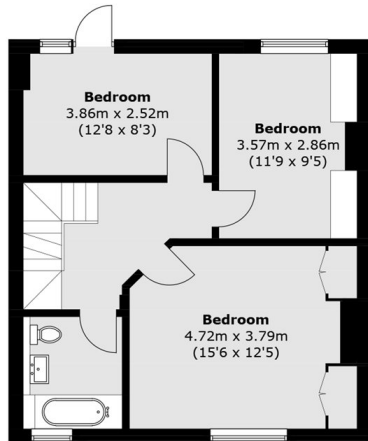
A five bedroom late Victorian terrace on one of the most desirable tree lined streets in Brockley's Conservation area.

St. Margarets is one of the prettiest tree-lined streets in Brockley. Brockley station offers Overground and services to London Bridge and nearby Crofton Park station to Blackfriars via the Thameslink service. Hilly Fields Park is nearby and Brockley Road offers a range of shops, restaurants and local amenities.

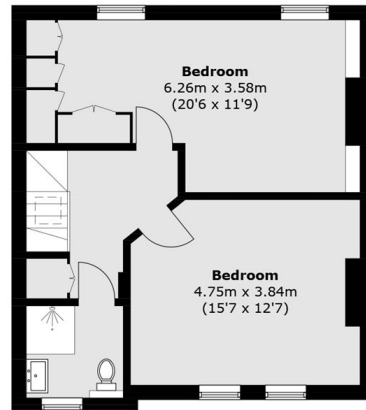
Features

- Five Bedrooms
- Arranged Over Three Floors
- Large Reception Room
- Landscaped Garden
- Brockley Conservation Area
- Close To Transport

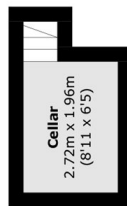
St. Margarets Road, London, SE4



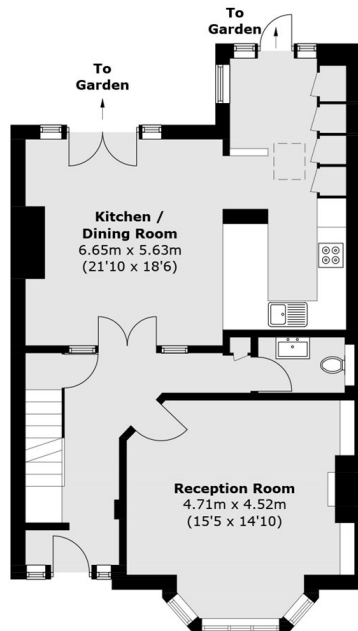
First Floor



Second Floor



Lower Ground Floor



Ground Floor

Total area (approx.): 179.6 sq. m (1,933.0 sq. ft)