



## Elmhurst Street, SW4

£2,500 Per calendar month

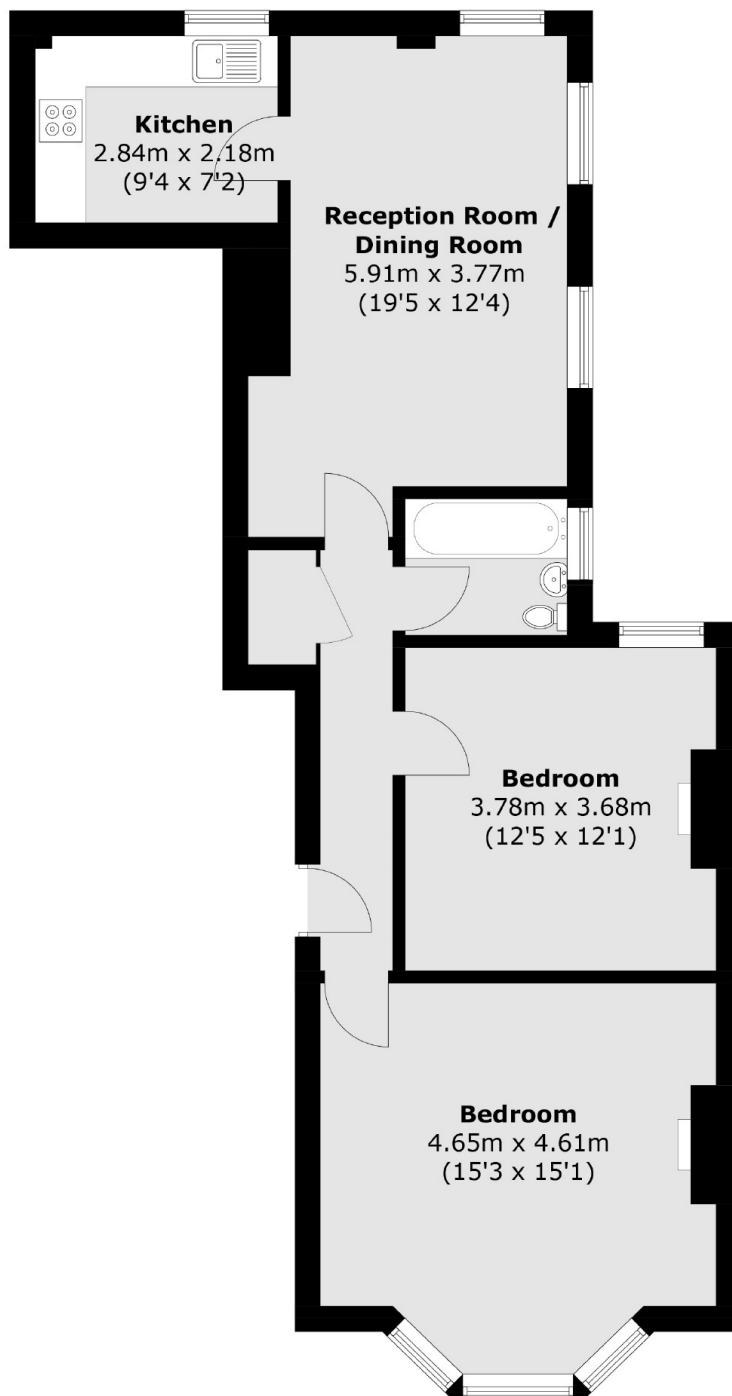
Located on the top floor of a secure mansion block, this property offers two double bedrooms, a reception room with space for dining and a separate kitchen. Ideal for professional sharers or a couple.

Situated on a residential road minutes from Clapham High Street and Clapham Old Town. With Clapham North underground and Clapham High Street overground stations nearby.

### Features

- Two Double Bedrooms
- Top Floor Flat
- Spacious Reception Room
- Separate Kitchen
- Neutral Interior
- Close To Transport

# Elmhurst Street, London, SW4



Total area (approx.): 70.5 sq. m (758.8 sq. ft)