



Guide Price
£220,000

Leasehold

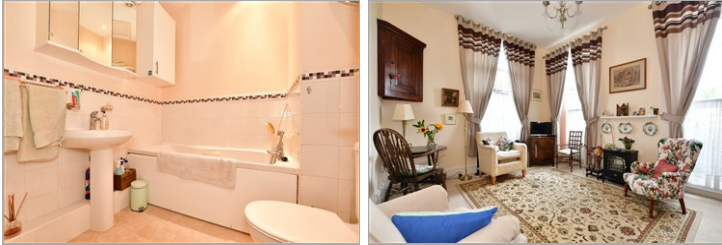
2x  1x  1x 

**The Maltings, High
Street, Hythe, Kent,
CT21**

OVER 60?

Secure this property
for up to **59% less!**

Wards
Helping you move forwards



Main features

- Ground floor apartment with allocated parking
- Grade 2 listed building with original sash windows and newly installed secondary glazing
- Underfloor heating
- Fantastic location on Hythe's beautiful High Street
- Close to canal and beach

Accommodation

GROUND FLOOR

Entrance Hall

Lounge: 14'4 x 11'0 (4.37m x 3.36m)

Kitchen: 10'5 x 7'3 (3.18m x 2.21m)

Bedroom 1: 10'8 x 9'9 (3.25m x 2.97m)

Bedroom 2: 10'1 x 7'1 (3.08m x 2.16m)

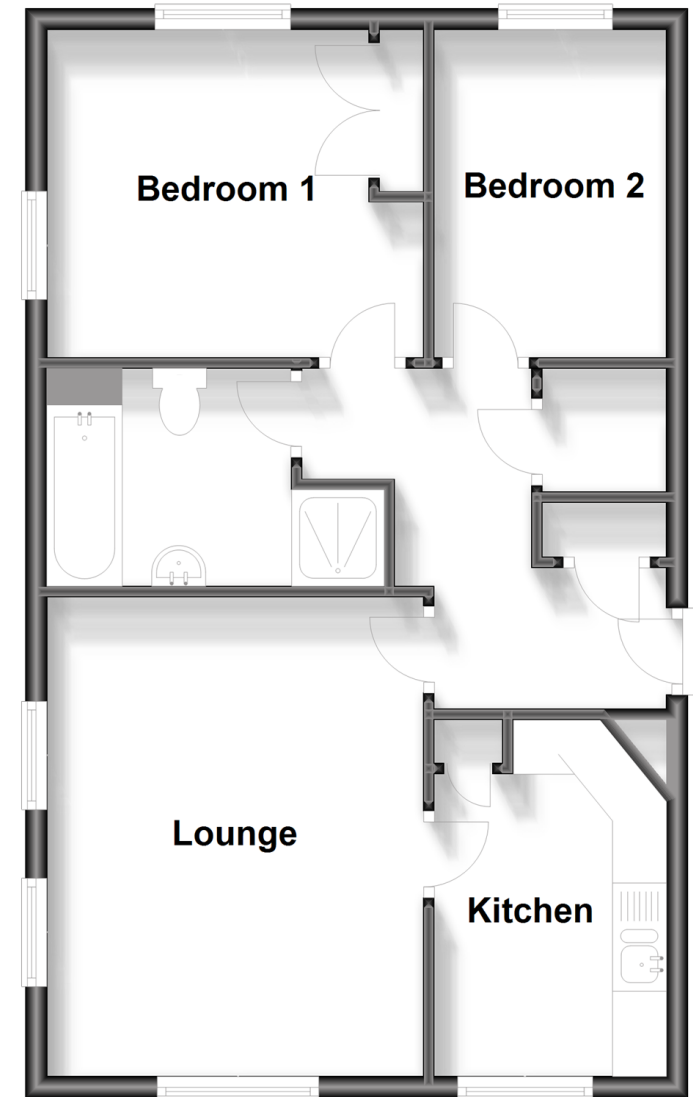
Bathroom: 7'3 x 6'8 (2.21m x 2.03m)

OUTSIDE

Allocated Parking

Ground Floor

Approx. 55.6 sq. metres (598.0 sq. feet)



Call Hythe - 01303 267473 ■ wardsofKent.co.uk

- Legal advice should be taken to verify fixtures/fittings, planning, alterations and/or lease details
- Appliances & services are untested, dimensions are approximate and floor plans are not to scale
- Through a Homewise Home For Life Plan people aged 60+ can secure this property for up to 59% less, by purchasing a Lifetime Lease



12824571/20260204/MEL/MIB