



Twickenham Road, TW11

£949,950

Dexters



Twickenham Road, TW11

This stunning top floor riverside apartment, nestled on the banks of The River Thames, with panoramic views from a large roof garden, two balconies, underground parking with concierge service.

Enter into the apartment which offers incredible entertaining space, features include a fabulous reception room with dining area there are floor to ceiling windows, a vaulted ceiling and two sets of doors leading out to two balconies with superb views. The kitchen opens onto reception area making this sociable and easy to entertain. From the reception room an impressive spiral staircase leads up to a mezzanine reception/study area with a door leading out to a decked roof garden with fabulous views over the River Thames, Teddington Lock and surrounding areas.

The Master Bedroom includes a fitted wardrobe, double doors which lead to the balcony and an en suite shower room. There is also a second double bedroom and a separate new modern family bathroom.

This property include air conditioning and lift service whilst the prestigious Wharf development also offers immediate access to the River Thames, visitors parking areas, a modern gymnasium/fitness centre and concierge.

Features

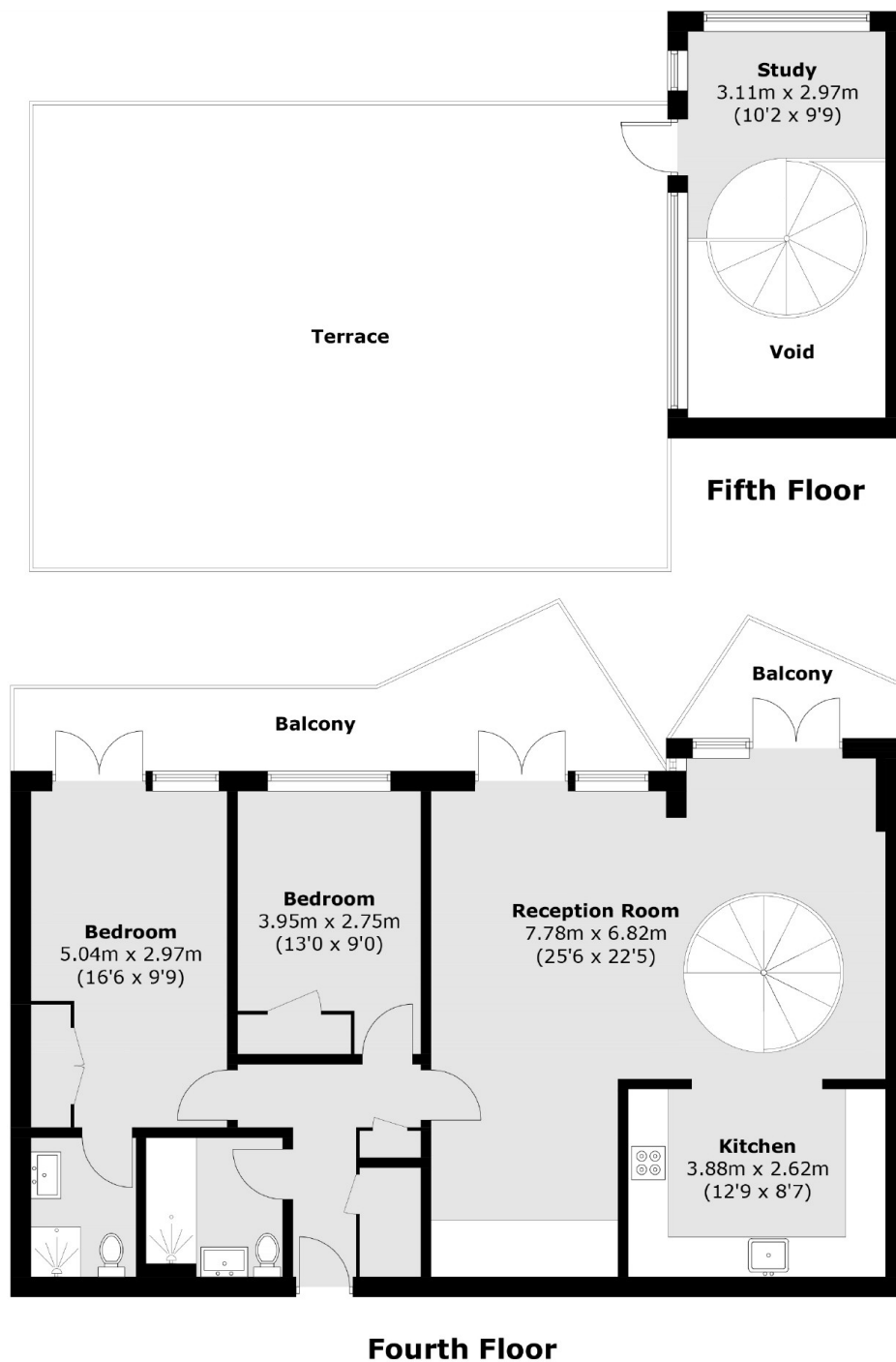
- Penthouse Apartment
- Panoramic River View
- Large Roof Terrace
- Two Balconies
- Two Double Bedrooms
- Two Bathrooms







Twickenham Road, Teddington, TW11



Total area (approx.): 106.4 sq. m (1,145.3 sq. ft)
(Excluding Void)

Balconies / Terrace: 84.0 sq. m (904.2 sq. ft)