



FREEHOLD

£325,000



**10 ST. JOHNS MEWS, (THE OLD CARETAKERS COTTAGE),
CINDERFORD, GLOUCESTERSHIRE, GL14 3FA**

- THREE BEDROOMS
- GAS CENTRAL HEATING
- GARDEN
- LARGE KITCHEN/DINING ROOM
- OFF ROAD PARKING
- PERIOD FEATURES
- PRIVATE LOCATION
- MULLION WINDOWS

www.kjtresidential.co.uk

10 ST. JOHNS MEWS, (THE OLD CARETAKERS COTTAGE), CINDERFORD, GLOUCESTERSHIRE, GL14 3FA

KJT RESIDENTIAL ARE DELIGHTED TO OFFER FOR SALE, A LOVELY OLD FORMER CARETAKER'S COTTAGE, OOZING CHARACTER AND CHARM BUT AT THE SAME TIME, OFFERING GOOD SIZED LIVING ACCOMMODATION IN A CONVENIENT YET PRIVATE LOCATION.

The market town of Cinderford offers a range of amenities to include shops, post office, supermarkets, library, health centre, community hospital, dentist, sports and leisure centre, primary and secondary education and a bus service to Gloucester which is approximately 14 miles away and surrounding areas.

A wider range of facilities is also available throughout the Forest of Dean including an abundance of woodland and river walks. The Severn Crossings and M4 towards London, Bristol and Cardiff are easily reached from this area along with the cities of Gloucester and Cheltenham for access onto the M5 and the Midlands.

Imposing entrance door to -

Porch: Door to -

Living Room: 14' 9" x 13' 1" (4.5m x 4m), Period fireplace, Mullion window to side, window to front, radiator.

Kitchen/Dining Room: 26' 7" x 15' 5" (8.1m x 4.7m), Stone fireplace with wood-burning stove, fitted kitchen with oak fronted units and granite worktops, sink unit, island unit, two windows and door to front, built-in dresser, stairs off.



Landing: Exposed stone walls, timber floor, fitted shelves, door to loft, skylight.

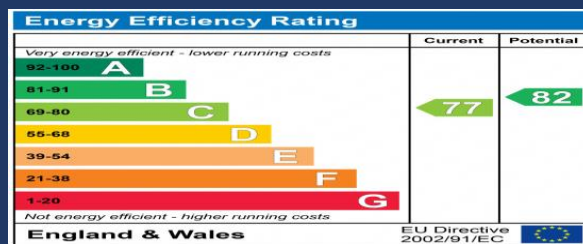
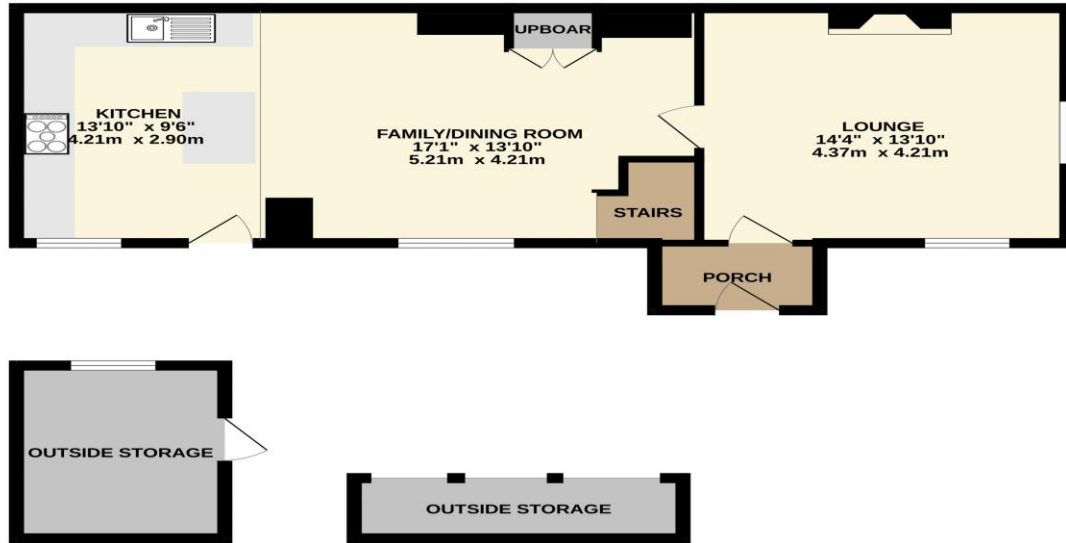
Bedroom One: 14' 5" x 13' 5" (4.4m x 4.1m), Exposed wood floor, exposed stone wall and fireplace (display) Mullion window to side, window to front, radiator. En-suite: Shower cubicle, W.C., vanity wash hand basin, radiator, tiling.

Bedroom Two: 13' 5" x 8' 10" (4.1m x 2.7m), Window to front, exposed wood floor, radiator.

Bedroom Three: 8' 10" x 7' 10" (2.7m x 2.4m), Window to front, pitch pine flooring, radiator.



GROUND FLOOR
698 sq.ft. (64.8 sq.m.) approx.



PASSIONATE
ABOUT
Property
SINCE 1982