



Blagrove Road, TW11

£499,950

Situated in the highly sought-after Carlisle Court development on Blagrove Road, this immaculately presented first-floor apartment offers two double bedrooms, two bathrooms and a rare opportunity to enjoy uninterrupted views over the stunning Bushy Park.

Located off Blagrove Road in Teddington with Bushy Park on your doorstep and a short walk to Kingston's shops, the property is excellently located for all amenities.

Features

- Two Double Bedrooms
- Two Bathrooms
- Two Balconies
- Lift Service
- Views Over Bushy Park
- No Onward Chain



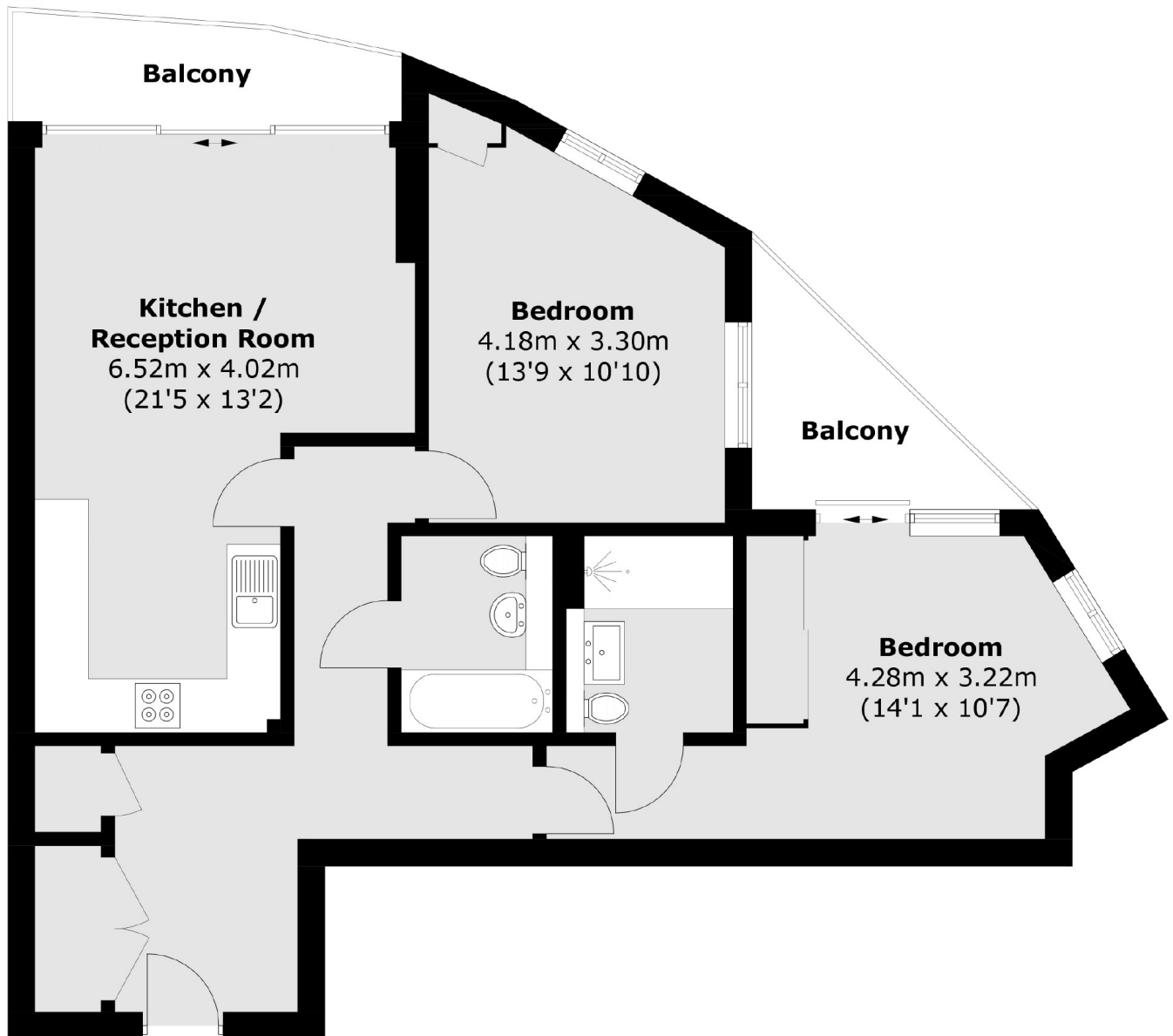
Blagrove Road, TW11

The apartment is on the first floor and features a spacious and light filled living area with large windows framing views of Bushy Park . A modern fitted kitchen and open plan reception/dining space leads onto the balcony. This provides the perfect entertaining space.

The property has two double bedrooms with fitted wardrobes and two bathrooms. Further benefits include underground secure parking and communal gardens.



Blagrove Road, Teddington, TW11



Total area (approx.): 77.9 sq. m (838.5 sq. ft)
Balcony area (approx.): 9.2 sq. m (99.0 sq. ft)