



PORTERS ESTATE AGENTS
RESIDENTIAL SALES, LETTINGS & MANAGEMENT

ANDREW CROFT & CO
SOLICITORS & NOTARY PUBLIC



240 Balham High Road
London SW17 7AW
Tel: 020 8772 1004
www.portersbalham.com
info@portersbalham.com
DX: 41604 Balham

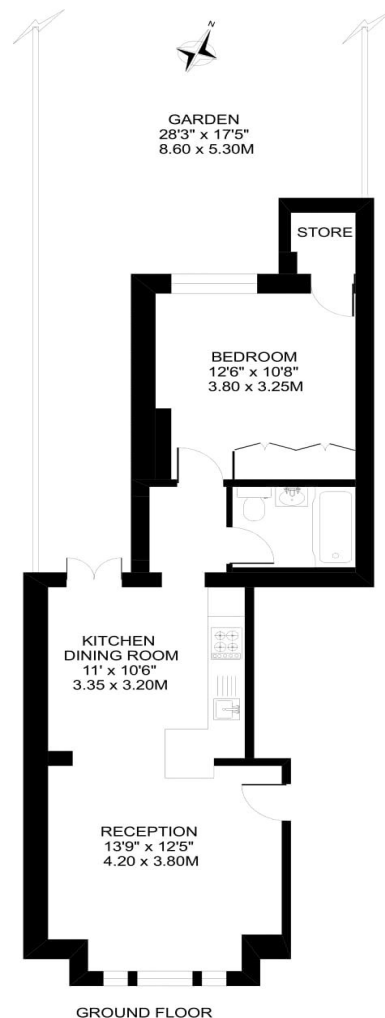


AI staged



AI staged

**19 MANCHURIA ROAD
LONDON SW11**
APPROXIMATE INTERNAL FLOOR AREA
510 SQ.FT. / 47.3 SQ.M.



19 Manchuria Road Clapham SW11 6AF

Porters John Dean are delighted to present this superb one-bedroom ground floor garden flat ideally located in the highly sought-after area of Clapham Common, West Side. Beautifully presented throughout, the property extends to approximately 510 sq ft and features a spacious open-plan kitchen/reception room, stylish contemporary décor including feature fireplace and large bay windows. French doors lead directly onto a private sunny rear garden, creating an excellent space for both relaxing and entertaining. Perfectly positioned, the property enjoys easy access to extensive green spaces, sports facilities, cafés and local amenities. Clapham South Underground station (Northern Line) is within a short walk, while Balham and Clapham Junction also provide excellent rail connections into Central London and beyond.

- A SUPERB ONE BEDROOM GROUND FLOOR FLAT
- DIRECT ACCESS ONTO PRIVATE GARDEN
- Open plan kitchen/reception area
- Feature Fireplace
- Bay Windows
- Scope To Update
- Separate Utility Area
- Offered With No On-Going Chain