



Ballater Road, SW2

£4,000 Per calendar month

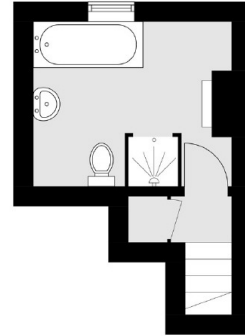
Arranged over three floors, this family home has been finished to a high standard throughout. Offering four double bedrooms, two bathrooms, reception room and separate eat-in kitchen.

Located just off Acre Lane, which is on the door step of vibrant Brixton and trendy Clapham. Brixton provides excellent transport links into the City.

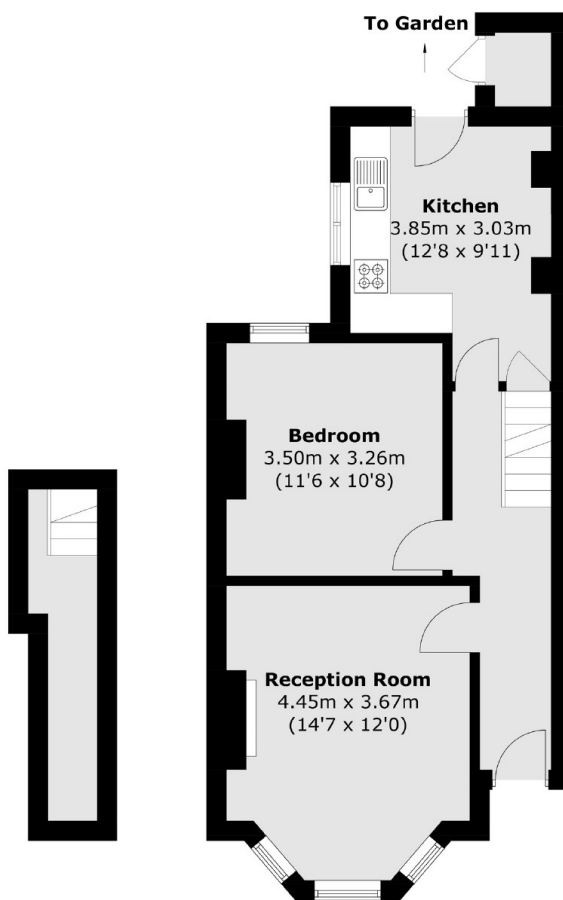
Features

- Four Double Bedrooms
- Eat-In Kitchen
- Wooden Flooring
- Two Bathrooms
- Private Garden
- Period House

Ballater Road, London, SW2

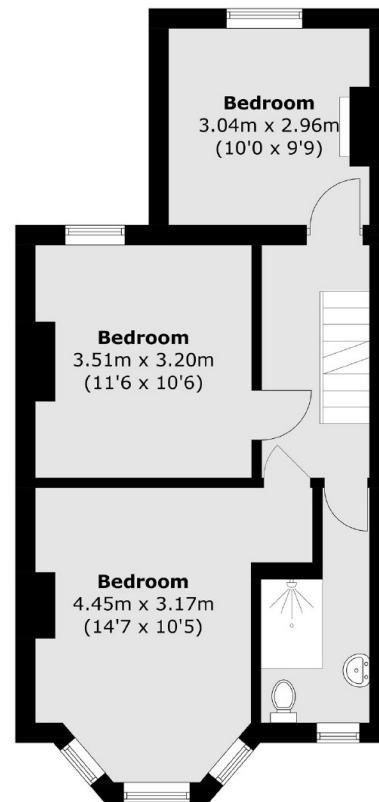


Second Floor



Cellar

Ground Floor



First Floor

Total area (approx.): 108.3 sq. m (1,165.6 sq. ft)
External Cupboard (approx.): 1.0 sq. m (10.7 sq. ft)