

Michael Road, SW6

£600 Per week

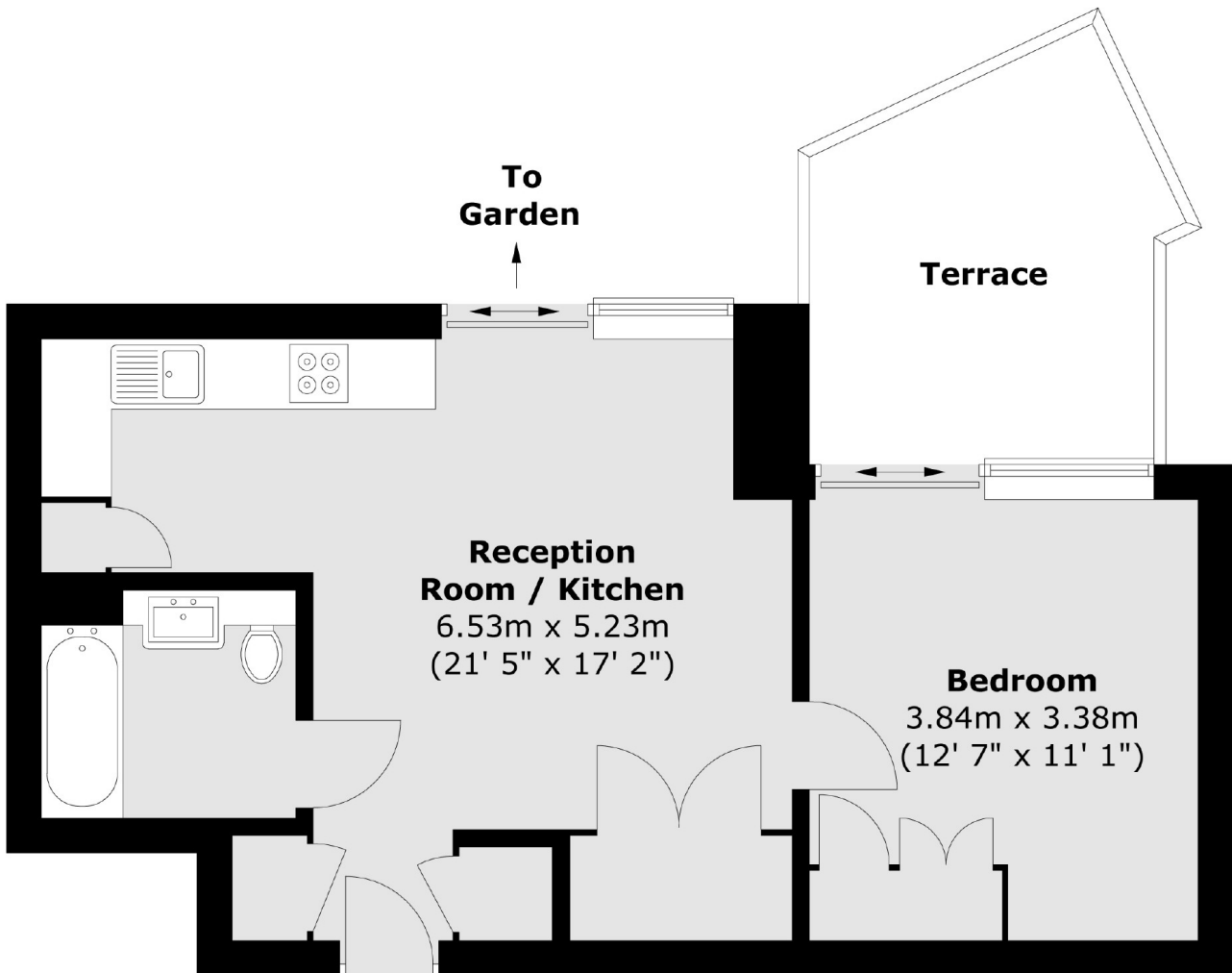
An unfurnished one bedroom flat with a private terrace, located within the secure King's Park Road development.

Kings Road Park is ideally located for the local amenities of Imperial Wharf while there is a wide range of shops, bars and boutiques available on New King's Road.

Features

- One Double Bedroom
- Unfurnished
- Swimming Pool
- Private Terrace
- 24-Hour Concierge
- Available September

Michael Road, London, SW6



Total area (approx.) : 46 sq. m (495 sq. ft)
Total terrace area (approx.) : 9.9 sq. m (106 sq. ft)