



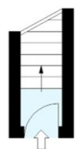
Flat, 162B Carlingford Road, London, N15 3EU

£3,000 PCM

- Split Level Conversion Flat
- Gas Central Heating
- Tastefully Finished Throughout
- Over 1,100 Sq. Feet
- Three Double Bedrooms
- Furnished
- Double Glazed Sash Windows
- Juliet Balcony

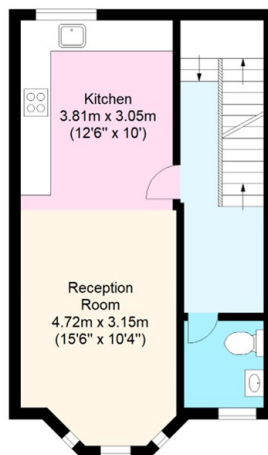
Ground Floor Entrance

Approx. 1.7 sq. meters (18.3 sq. feet)



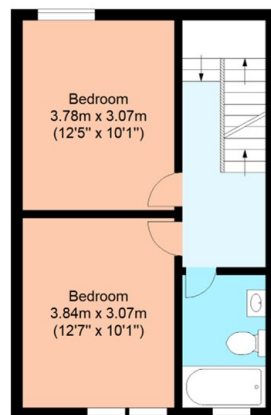
First Floor

Approx. 39.4 sq. meters (424.1 sq. feet)

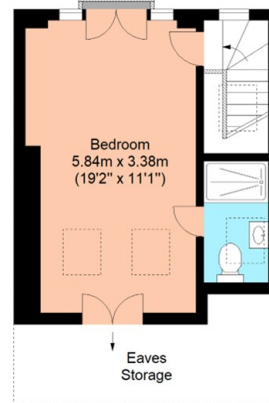


Second Floor

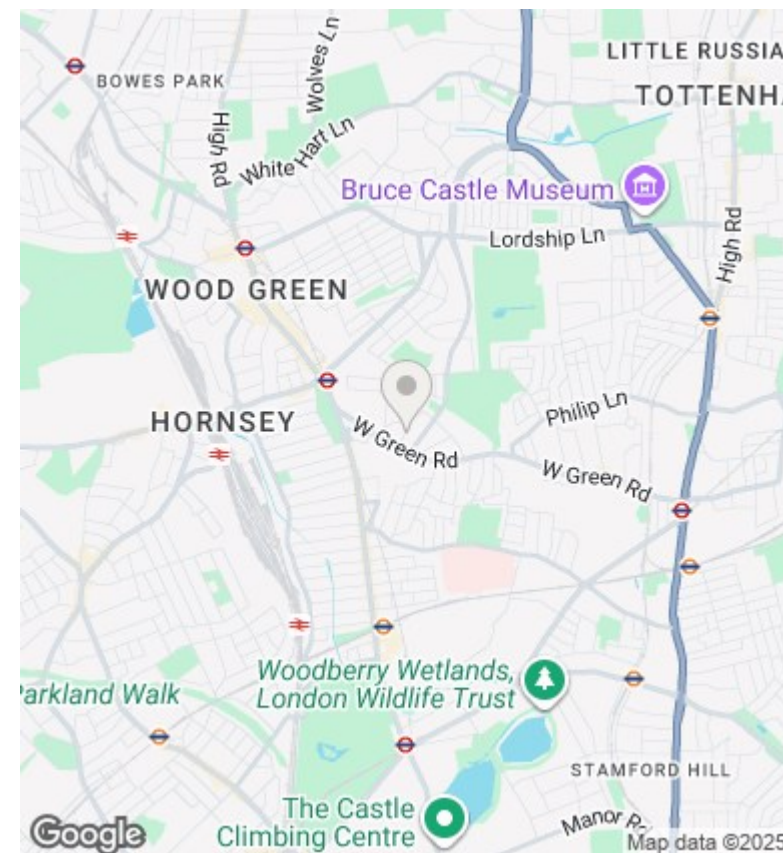
Approx. 37.9 sq. meters (408.0 sq. feet)



Approx. 26.7 sq. meters (287.4 sq. feet)



Total area: approx. 105.7 sq. meters (1137.8 sq. feet)
For illustration purposes only - not to scale



Viewings

Viewings by arrangement only. Call 020 7485 0112 to make an appointment.

Council Tax Band

C

EPC Rating:

C

Energy Efficiency Rating		
	Current	Potential
Very energy efficient - lower running costs		
(92 plus) A		
(81-91) B		
(69-80) C	75	75
(55-68) D		
(39-54) E		
(21-38) F		
(1-20) G		
Not energy efficient - higher running costs		
England & Wales	EU Directive 2002/91/EC	