



38 Cairo Road, Walthamstow
By Auction £140,000 Leasehold



38 Cairo Road, Walthamstow

248 Hoe Street, Walthamstow, London,
E17 3AX

020 8521 1122
www.kings-group.net

- Over 60's Development
- First Floor
- Walthamstow Central Location
- Parking
- Chain Free
- Walking distance to local shops

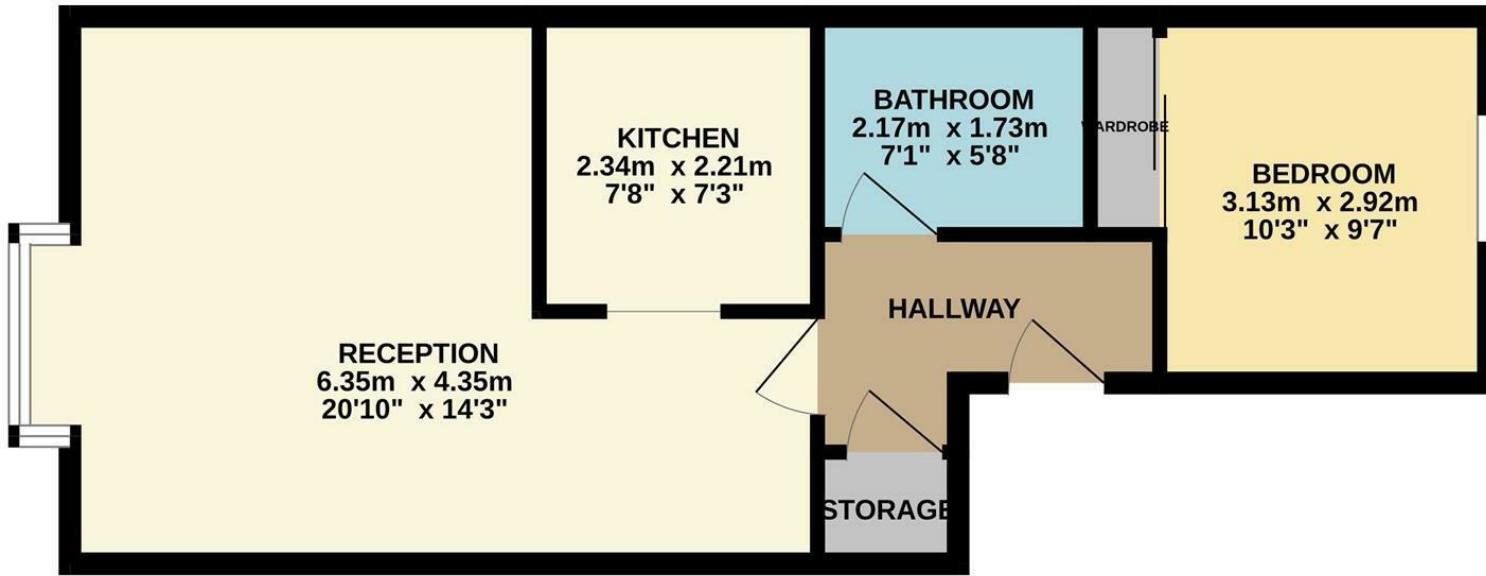
Nestled on the charming Cairo Road in London, this delightful house offers a perfect blend of comfort and convenience. With a total area of 470 square feet, the property features one well-proportioned reception room, ideal for relaxation or entertaining guests. The single bedroom provides a peaceful retreat, while the bathroom is designed for both functionality and comfort.

This residence is part of an over 60's development, making it an excellent choice for those seeking a community-oriented environment. The property is chain-free, allowing for a smooth and straightforward purchasing process.

Situated within walking distance to Walthamstow Central, residents will enjoy easy access to a variety of shops, cafes, and local amenities, enhancing the overall living experience. Additionally, the availability of parking adds to the convenience of this lovely home.

Whether you are looking to downsize or seeking a tranquil place to call home, this property on Cairo Road presents an excellent opportunity to enjoy a comfortable lifestyle in a vibrant area of London.

GROUND FLOOR
43.6 sq.m. (470 sq.ft.) approx.



TOTAL FLOOR AREA : 43.6 sq.m. (470 sq.ft.) approx.

Whilst every attempt has been made to ensure the accuracy of the floorplan contained here, measurements of doors, windows, rooms and any other items are approximate and no responsibility is taken for any error, omission or mis-statement. This plan is for illustrative purposes only and should be used as such by any prospective purchaser. The services, systems and appliances shown have not been tested and no guarantee as to their operability or efficiency can be given.
Made with Metropix ©2024



THE PROPERTY MISDESCRIPTIONS ACT 1991. The agent has not tested any apparatus, equipment, fixtures or services and so cannot verify that they are in working order, or fit for the purpose. References to the Tenure of a property are based on information supplied by the vendor. The agent has not had sight of the Title documents. A buyer is advised to obtain verification from their Solicitor or Surveyor



248 Hoe Street, Walthamstow, London,
E17 3AX

020 8521 1122

www.kings-group.net



Zoopla.co.uk



rightmove.co.uk
The UK's number one property website

