



Aspen Gardens, HARTLEPOOL TS27 3DD

welcome to

Aspen Gardens, HARTLEPOOL

Ready to move into and neutrally decorated throughout, this four bedroom, new build property, with its NHBC warranty, is ideally located on the popular Hartwell Park development. Built by Miller Homes, the property is well suited to a range of buyers and would be particularly appealing to families.

Entrance Hallway

Entered via composite double glazed door, LVT flooring, radiator, handy built in cloaks cupboard, stairs to first floor, door leading to downstairs WC, door leading to lounge.

Downstairs W C

UPVC double glazed window to front, LVT flooring, low level low flush WC, radiator, wash hand basin with mixer tap, half tiled walls.

Lounge

UPVC double glazed window to front, radiator, TV point.

Kitchen Diner

Bright and airy, UPVC double glazed window to rear, UPVC double glazed french doors to rear, LVT flooring, radiator, space for dining table, space for seating, space for freestanding fridge freezer, range of white wall and base units with complementing working surfaces and matching upstands, stainless steel sink/drainer with mixer tap, inset electric oven, 4 ring gas hob with stainless steel splashback and chimney style stainless steel extractor over, door leading to handy utility area under the stairs.

Utility Area

Plumbing and recess for washing machine, space for tumble dryer, work surface with matching upstand, wall mounted Baxi combination boiler, extractor fan, vinyl flooring.

First Floor Landing

Loft hatch access, radiator, doors leading to all principle rooms.

Bedroom 1

UPVC double glazed window to front, radiator, door

leading to en suite shower room.

En Suite Shower Room

UPVC double glazed window to side, LVT flooring, radiator, low level low flush WC, wall mounted wash hand basin with mixer tap, double shower cubicle with hand held attachment, tiled walls, extractor fan.

Bedroom 2

UPVC double glazed window to front, radiator, 2 door built in sliding wardrobe.

Bedroom 3

UPVC double glazed window to rear, radiator

Bedroom 4

UPVC double glazed window to rear, radiator, 2 door built in mirrored sliding wardrobes.

Family Bathroom

UPVC double glazed window to side, LVT flooring, extractor fan, radiator, low level low flush WC, wall mounted wash hand basin with mixer tap, panel bath with central mixer tap, feature wall mirror, half tiled walls.

Externally

Front Garden

Attractive garden with lawned area and planted borders, patio walkway that leads to the front door.

Rear Garden

Wall and fence enclosed, lawned areas, planted borders, wooden gate that gives access to the garage at the rear, decked area, outdoor tap, wooden gate to side of the property that leads to the front, double width tandem driveway that is block paved and gives access to the garage.



Garage

Up and over door, power and light.

Agents Note

Disclaimer:

Under the terms of the Estate Agents Act 1979 (section 21) please note that the vendor of this property is an employee of the Connells Group.



view this property online mannersandharrison.co.uk/Property/HAR120313



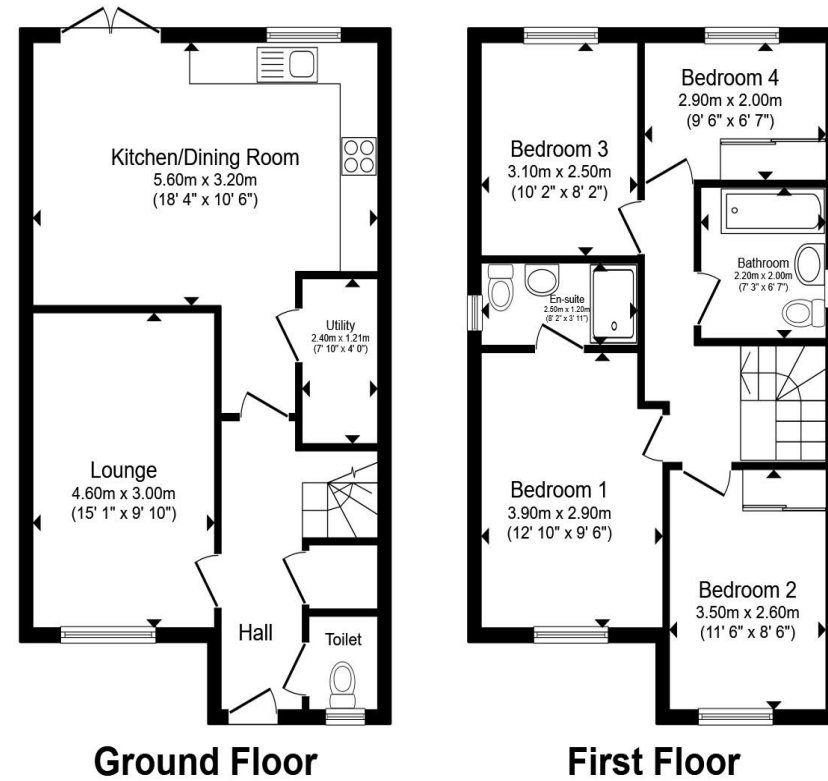
welcome to

Aspen Gardens, HARTLEPOOL

- NEW BUILD WITH NHBC WARRANTY
- GARAGE
- EN SUITE
- UTILITY AREA
- DOWNSTAIRS WC

Tenure: Freehold EPC Rating: B
Council Tax Band: D

£260,000



Total floor area 99.4 m² (1,070 sq.ft.) approx

This floor plan is for illustrative purposes only. It is not drawn to scale. Any measurements, floor areas (including any total floor area), openings and orientation are approximate. No details are guaranteed, they cannot be relied upon for any purpose and they do not form part of any agreement. No liability is taken for any error, omission or misstatement. A party must rely upon its own inspection(s). Powered by www.propertybox.io



view this property online mannersandharrison.co.uk/Property/HAR120313



Property Ref:
HAR120313 - 0003

1. MONEY LAUNDERING REGULATIONS Intending purchasers will be asked to produce identification documentation at a later stage and we would ask for your co-operation in order that there is no delay in agreeing the sale. 2. These particulars do not constitute part or all of an offer or contract. 3. The measurements indicated are supplied for guidance only and as such must be considered incorrect. Potential buyers are advised to recheck measurements before committing to any expense. 4. We have not tested any apparatus, equipment, fixtures or services and it is in the buyers interest to check the working condition of any appliances. 5. Where an EPC, or a Home Report (Scotland only) is held for this property, it is available for inspection at the branch by appointment. If you require a printed version of a Home Report, you will need to pay a reasonable production charge reflecting printing and other costs. 6. We are not able to offer an opinion either written or verbal on the content of these reports and this must be obtained from your legal representative. 7. Whilst we take care in preparing these reports, a buyer should ensure that his/her legal representative confirms as soon as possible all matters relating to title including the extent and boundaries of the property and other important matters before exchange of contracts.

Manners & Harrison is a trading name of Sequence (UK) Limited which is registered in England and Wales under company number 4268443, Registered Office is Cumbria House, 16-20 Hockliffe Street, Leighton Buzzard, Bedfordshire, LU7 1GN. VAT Registration Number is 500 2481 05.

manners & harrison



01429 261351



Hartlepool@mannersandharrison.co.uk



Shrewsbury House 129 York Road,
HARTLEPOOL, Durham, TS26 9DW



mannersandharrison.co.uk