



21 Clare Croft, Middleton
£375,000



21 Clare Croft

Middleton, Milton Keynes

Council Tax band: D

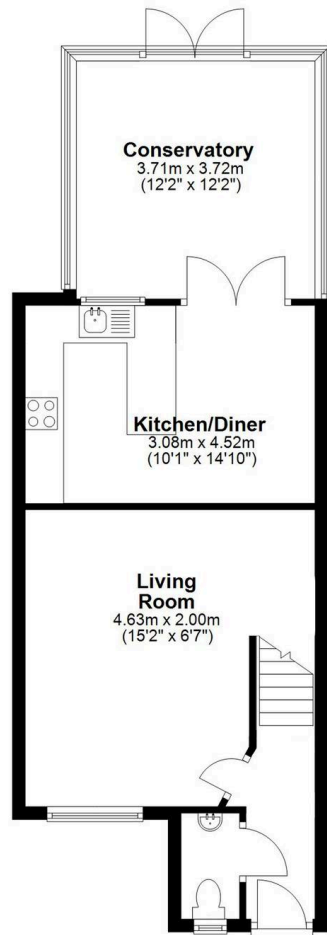
Tenure: Freehold

- Highly desirable three-bedroom semi-detached home
- Located in the sought-after area of Middleton, Milton Keynes
- Close to local shops, amenities, and highly regarded schools
- Generous lounge ideal for relaxing and entertaining
- Breakfast bar perfect for casual dining and social occasions
- Large, well-maintained rear garden
- Garage providing secure parking or additional storage
- Ideal for families, professionals, or those looking to upsize

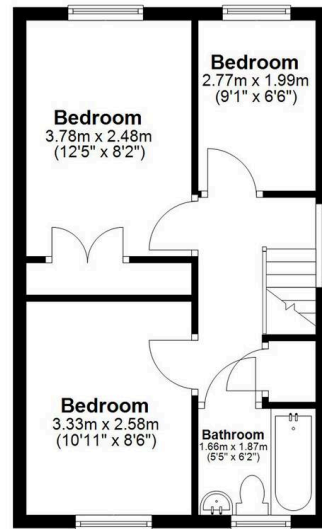




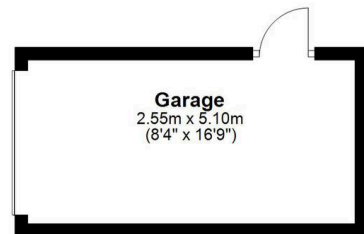
Approx. Total Internal Area 1087.90 sqr ft - 101.07 sqr m
(Excluding garage)



Ground Floor
Approx. 66.1 sq. metres (711.6 sq. feet)



First Floor
Approx. 35.6 sq. metres (383.1 sq. feet)



Garage
2.55m x 5.10m
(8'4" x 16'9")

This floor plan should be used as a general outline for guidance only and does not constitute in whole or in part an offer or contract. Any intending purchaser or lessee should satisfy themselves by inspection, searches, enquiries and full survey as to the correctness of each statement. Any areas, measurements or distances quoted are approximate and should not be used to value a property or be the basis of any sale or let.

CreativelImage.uk



Elevation

Elevation Estate Agents, Beechwood House - MK5 8FT

01908
231551 • residential@elevationestateagents.com • www.elevationestateagents.com/

