



Sutton Court Road, London, W4  
Guide Price £2,250,000

**WHITMAN & CO.**  
SALES · LETTINGS · COMMERCIAL



An exceptional, immaculately refurbished family home, interior designed by House Nine Design, occupying a substantial plot and totalling close to 2500 sqft situated in the popular 'Grove Park' area of Chiswick, within close proximity to Chiswick House and Grounds and the River Thames. The house has been thoughtfully designed to strike the perfect balance between contemporary and classic styles, with meticulous attention to detail throughout. The accommodation comprises a welcoming entrance hall, a 20'5 front reception room with doors leading to an impressive kitchen/dining/family area (32' wide) with a bespoke fitted kitchen with adjoining pantry, a playroom, a fabulous 71'x33' landscaped garden with open aspect, a utility/guest WC, a boot room, a principal bedroom suite with ensuite shower and walk-in wardrobe, four further double bedrooms, two further bathrooms (one being en-suite), extensive eaves storage and off-street parking for two cars. Transport links include Chiswick Station, local bus routes and the A4/M4 for routes in and out of London. The property is within a short walk of Chiswick High Road's shops, cafes and restaurants.



# Sutton Court Road, W4

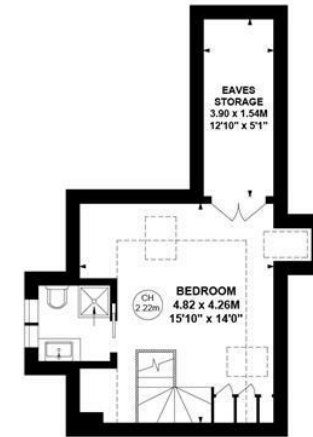
Approximate gross internal area

214.90 sq m / 2313 sq ft

(Including Eaves Storage)

Eaves Storage : 6.00 sq m / 65 sq ft

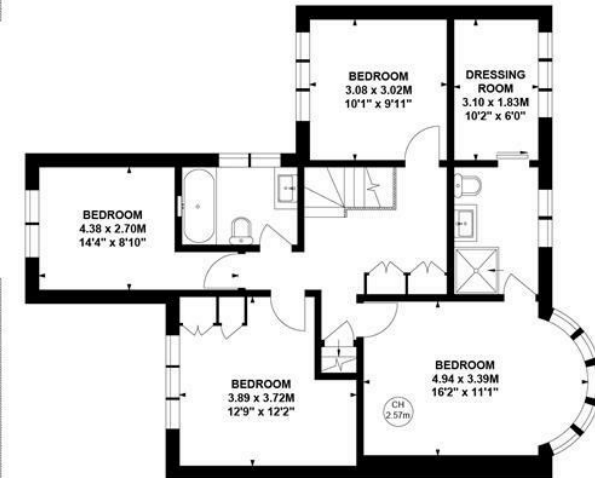
Key :  
CH - Ceiling Height



Second Floor



Ground Floor



First Floor

Not to scale, for guidance only and must not be relied upon as a statement of fact.

All measurements and areas are approximate only

- Immaculate interior designed family home
- Fabulous 71'x33' landscaped garden
- Off street parking for two cars

- 32' Kitchen/dining/family room with bespoke kitchen
- Five double bedrooms/three baths
- Totalling close to 2500 sqft

Tenure - Freehold  
Local authority - Hounslow  
Council tax - Band G

