

Purbeck Close, Bedford, MK41

Offers Over £365,000

3 1 1



Urban Luxe Property are pleased to present this wonderful three bedroom detached family home, ideally located in a quiet cul-de-sac in the heart of Goldington, Bedford.

Upon entering, you step into a spacious entrance hall and are welcomed into a bright and inviting lounge/diner, offering a versatile space for relaxation and entertaining. This well-proportioned area flows seamlessly, creating an open and airy feel throughout the ground floor.

The property features a well-appointed kitchen, providing a practical space, complete with ceramic hob and electric oven. It offers a functional layout to meet everyday needs.

Upstairs, you will find three comfortable bedrooms, each offering a peaceful retreat. The layout provides flexibility for various arrangements. A well-maintained family bathroom serves the upstairs accommodation.

Outside, the property benefits from a pleasant good sized garden space, perfect for outdoor enjoyment and providing a low-maintenance area for relaxation. There is also a handy garage.

Goldington offers excellent local amenities, including convenient access to local shops, schools, and green spaces. The area benefits from good transport links, making it easy to connect to Bedford town centre and beyond. Residents can enjoy a balanced lifestyle with both community spirit and practical conveniences close at hand.

This fantastic family home offers a solid foundation for comfortable living in a desirable location. We recommend early viewing to fully appreciate its potential.

Key Features

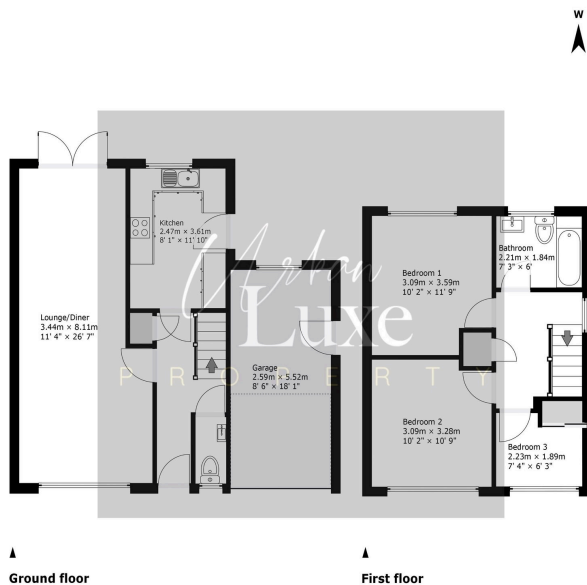
- 3 Bedrooms
- Modern Kitchen
- Family Bathroom
- Good sized rear garden
- Close to amenities
- Spacious lounge/diner
- Cloakroom
- Garage
- Close to green spaces
- Good transport links to town centre/A1/M1/A421

Ground floor - 41.56 m² / 447.36 sq ft

First floor - 35.73 m² / 384.58 sq ft

Approx total area - 77.29 m² / 831.95 sq ft

Approx total area with garage - 91.61 m² / 986.03 sq ft



This floorplan is provided as a guide to illustrate layout and should not be used for planning. Measurements are approximate and not to scale.