



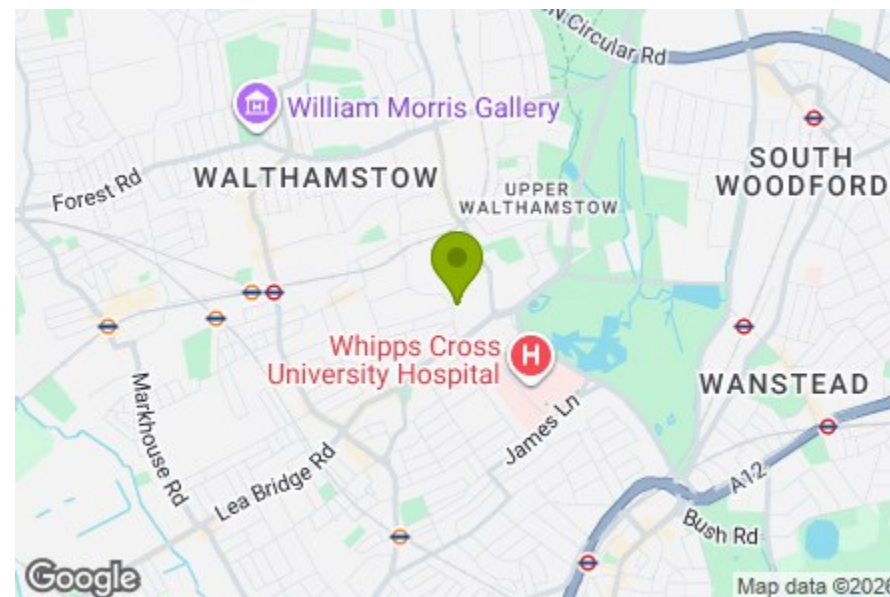
Reception Room
14'9" x 11'1"

Kitchen/Diner
10'2" x 9'6"

Bedroom
10'9" x 9'6"

Bedroom
16'0" x 13'5"

Bathroom
6'6" x 9'6"



Energy Efficiency Rating		Current	Potential
Very energy efficient - lower running costs			
(92 plus) A			
(81-91) B			
(69-80) C		72	78
(55-68) D			
(39-54) E			
(21-38) F			
(1-20) G			
Not energy efficient - higher running costs			
England & Wales		EU Directive 2002/91/EC	



SHERNHALL STREET, WALTHAMSTOW

Offers In Excess Of £465,000 Leasehold
2 Bed Apartment - Conversion



Features:

- First Floor Flat
- Well Presented
- Split Level
- Moments from Walthamstow Village
- Kitchen-Diner
- Easy Access to Wood Street Station

Spread out over two floors, this two-bedroom period conversion offers a wonderful balance of traditional charm and modern convenience. From the bright reception and dine-in kitchen to stylish bathroom and converted loft, it's all been brilliantly finished.

Nearby, you'll find some of the area's best amenities, with the buzz of Wood Street in one direction, and the charming Walthamstow Village in the other, meaning you've got an excellent choice of transport links too.

E11, E7, E12 & E15
hello11@stowbrothers.com
0203 397 2222

E4 & N17
hello4@stowbrothers.com
0203 369 6444

E17 & E10
hello17@stowbrothers.com
0203 397 9797

E18 & IG8
hello18@stowbrothers.com
0203 369 1818

E8, E9, E5, N16, E3 & E2
hellohackney@stowbrothers.com
0208 520 3077

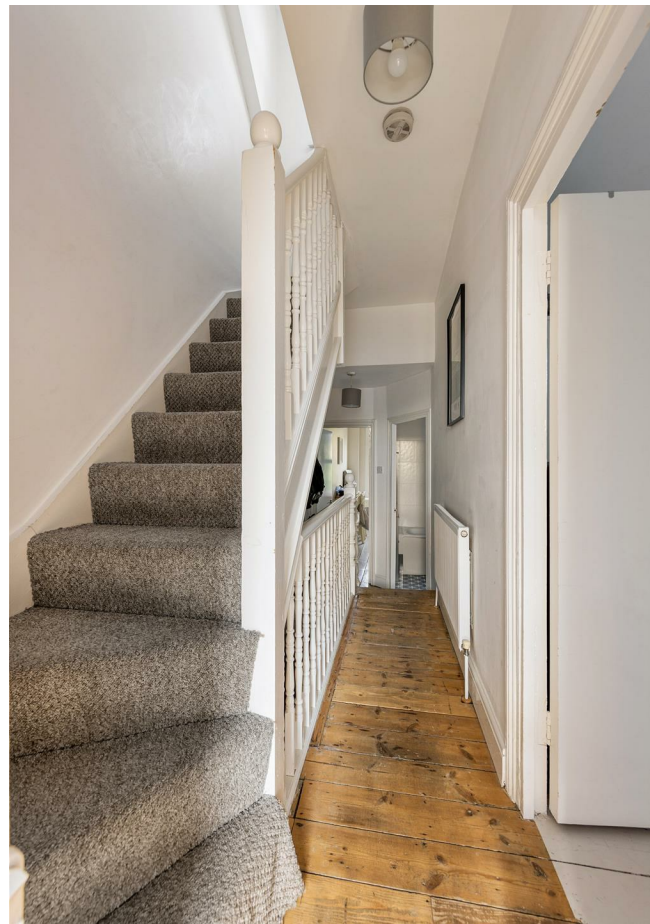
New Homes
newhomes@stowbrothers.com
0203 325 7227

Investment & Development
id@stowbrothers.com
0208 520 6220

Property Maintenance
propertymanagement@stowbrothers.com
0203 325 7228

STOWBROTHERS.COM
@STOWBROTHERS

REQUEST A VIEWING
0203 397 9797



IF YOU LIVED HERE...

Thanks to its great condition, you can instantly welcome friends into your 740 square foot home. The interior palette is made up of soft tones, resulting a calm living environment, so you'll enjoy relaxing on your own too.

On the first floor, your large reception room is a full of natural light thanks to the generous windows, which perfectly highlight the lovely original floorboards. Meanwhile, the dine-in kitchen offers another living space. Here you'll love the painted floorboards, brass fittings and timber worktops.

The bathroom is just a smart, with white tiling and sparkling fittings. Up in the converted loft, you'll find your master bedroom, which has lots of space for storage, as well as soft carpeting under foot.

Outside, you've got plenty to explore in the local area, including the brilliantly eclectic Wood Street, where you'll find everything from the Luke's Cider Tap in the indoor market to the award-winning Chocolatine bakery. At the Ravenswood Industrial Estate you've got more quirky but creative gems, such as the ever-popular God's Own Junkyard, as well as Malt Haus, Pillars Brewery, Trap and gin palace Mother's Ruin. Nearby, Walthamstow Village is packed with ancient history (which is how it gets its official 'village' status - it's not just a quaint, self-appointed title), as well as an

eclectic mix of independent shops, cafes, restaurants, pubs and stores.

If you need to escape further afield, you'll be pleased to know that you're only ten minutes on foot from Wood Street station, where you can nip to Liverpool Street in 20 minutes on the Weaver Overground, or walk 20 minutes to Walthamstow Central for access to the speedy Victoria line.

WHAT ELSE?

- Despite being in such a cosmopolitan hub, you're surrounded by excellent green space; Lloyd Park, which houses the William Morris Gallery, is one mile away, the recently launched Fellowship Square, with its impressive fountains, is in the same area, while Hollow Ponds, at the cusp of Epping Forest, is around ten minutes south-east.

- Head to Walthamstow Central for Europe's longest market which runs along Walthamstow High Street, as well 17&Central shopping centre and the multiscreen Forest cinema.

- New local? You can't go wrong with the Lord Raglan, a traditional boozery with a great selection of food and drinks. Date night? Try Art e Pasta, an Italian sharing plate restaurant. The morning after? Head to Lams Cafe for a hearty full English or Greek breakfast.



A WORD FROM THE EXPERT...

"For me it's the sheer variety you find in each pocket of Walthamstow that makes working and socialising here so enjoyable. Whether it's having a coffee from Perky Blenders, going for a Sunday morning walk in Epping Forest, dropping into one of the local breweries in Blackhorse Road, or catching up with friends in Lloyd Park, the growth and positive changes within E17 have been incredible in recent years."

KIM HEYWOOD
E17 BRANCH MANAGER

REQUEST A VIEWING
0203 397 9797

FOLLOW US → @STOWBROTHERS
STOWBROTHERS.COM