

Property ref: 70437

Oscar Wilde Road, Reading, RG1 3FH

£1,300 PCM

HASLAM'S
Lettings



A well presented one bedroom, first floor apartment located on the outskirts of Reading town centre.
Reading Borough Council tax band C.
Broadband/Mobile Info: Connections available. For an indication of specific speeds and supply of Broadband and Mobile, we advise applicants go to the Ofcom website 'Broadband and Mobile Coverage Checker'.

Available Now

- One double bedroom; One allocated parking space
- Open plan kitchen, living and dining room with balcony
- Manhattan kitchen units with oven, hob and hood with stainless steel splash back
- Sundry payment of £55pcm on top of the rent to cover hot water and heating via communal boiler
- Bathroom fitted with white Roca sanitary ware
- Furnished; EPC rating C; Managed by HASLAM'S

*Fees For Assured Shorthold Tenancies: when you rent a property from us you will be required to pay a sum equivalent to one weeks' rent for a holding deposit. Upon successful application, this amount will be off set against your first months' rent. You will also be required to pay a security deposit equivalent to 5 weeks' rent which will be held and protected in line with Deposit legislation. For more information about our fees please visit: www.haslams.net
Fees for all other tenancies (Non Housing Act Tenancies / Company Lets): when you rent a property from us we will charge you a one-off fee per property. This charge is the equivalent of 15 days of the monthly rental charge (+VAT) with a minimum fee of £450 (inc.VAT) up to a maximum of £650 (inc.VAT). Other fees may apply depending on your circumstances.

0118 960 1055

lettings@haslams.net www.haslams.net

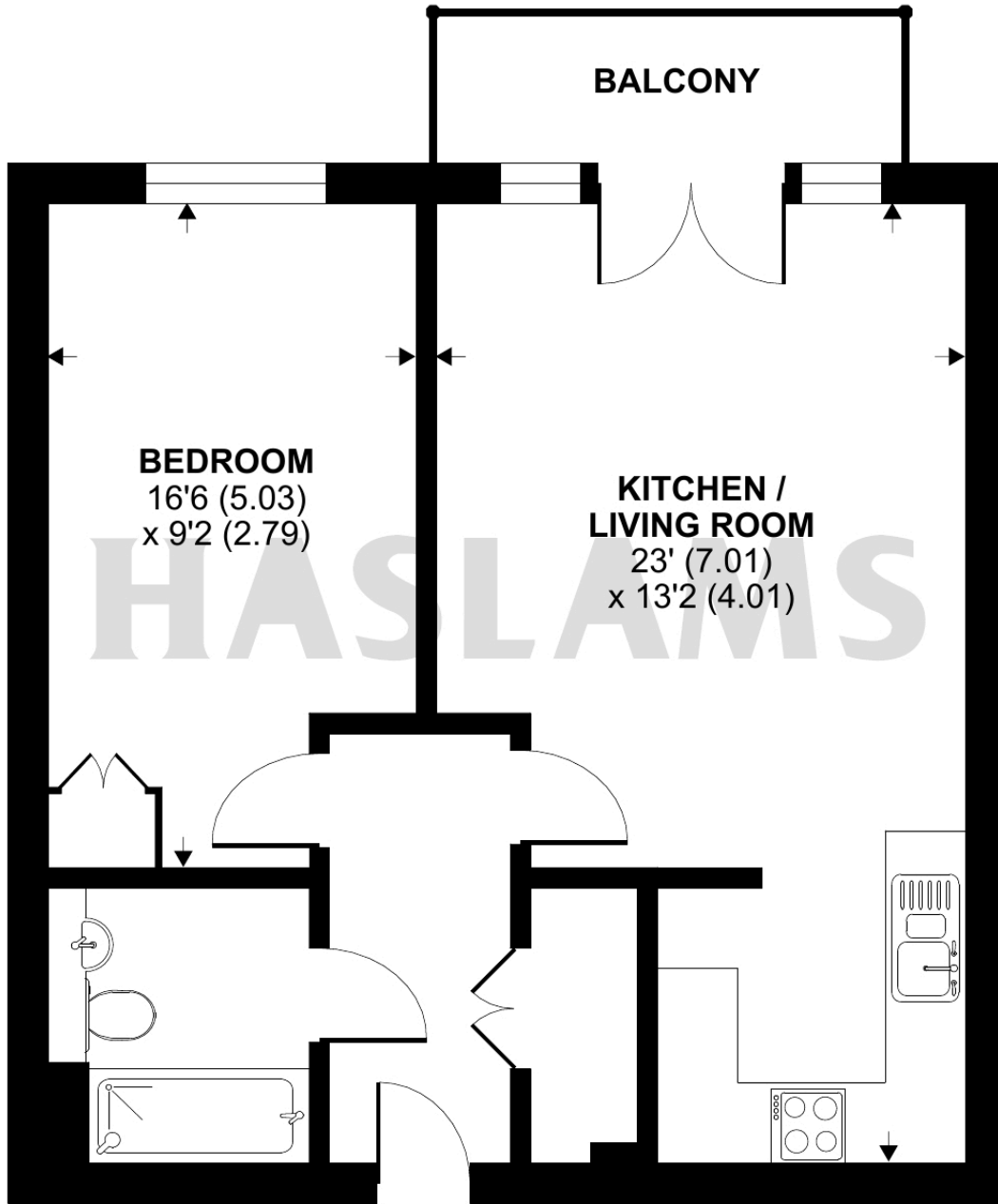
Haslams Estate Agents Ltd, 159 Friar Street, Reading, Berkshire, RG1 1HE



Oscar Wilde Road, Reading, RG1

Approximate Area = 545 sq ft / 50.6 sq m

For identification only - Not to scale



FIRST FLOOR



Floor plan produced in accordance with RICS Property Measurement Standards incorporating International Property Measurement Standards (IPMS2 Residential). © n1checom 2024. Produced for Haslam's. REF: 1123965