



## Manor Park, SE13

£290,000

A well-presented one bedroom flat situated on the raised ground floor of this attractive period building in the heart of Manor Park.

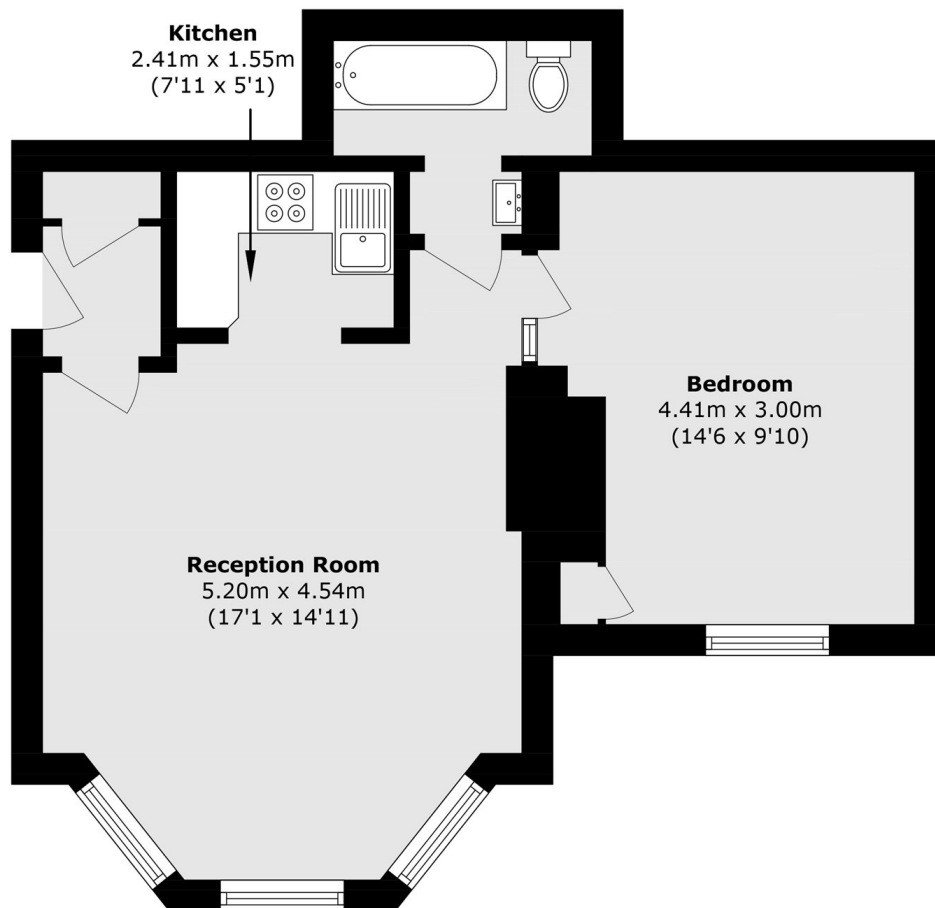
The property offers a spacious reception room with an open-plan kitchen, creating an ideal space for both relaxing and entertaining. The double bedroom is well-proportioned, and the flat further benefits from access to a communal garden. Offered to the market with no onward chain, this property would make an excellent purchase for first-time buyers or investors alike.

Manor Park is a popular residential area known for its green spaces and convenient transport links, providing easy access into Central London.

### Features

- Raised Ground Floor
- One Bedroom Flat
- No Upward Chain
- Communal Garden
- Ideal First Home/Investment
- Popular Location

# Manor Park, LONDON, SE13



Total area (approx.): 49.7 sq. m (534.9 sq. ft)