

Ist Call

SALES AND LETTINGS



Steining Avenue, Southend-On-Sea, SS2 4TP

Guide Price £500,000 - Freehold

Wick Estate, versatile chalet bungalow, up to 4 beds! Open lounge/diner with log burner, modern kitchen/ breakfast room, 70' garden, 29' garage/workshop, ample parking. Near Southend High for Girls. £500k-£525k. Must view!

** GUIDE PRICE £500,000 - £525,000 ** Situated in the heart of the highly sought-after Wick Estate, this versatile semi-detached chalet bungalow enjoys a prime position close to the prestigious Southend High School for Girls, with local shops and amenities conveniently nearby. Beautifully presented throughout, this flexible property offers up to four bedrooms configured across two floors, providing excellent accommodation options for growing families or multi-generational living. The welcoming open-plan lounge and dining area features a characterful log burner, creating a warm and inviting atmosphere perfect for family gatherings, while the modern fitted kitchen and breakfast room provides contemporary functionality with ample space for casual dining. Two well-proportioned bedrooms and a stylish bathroom complete the ground floor, offering the potential for single-level living if desired. The first floor houses two additional generous bedrooms and a contemporary shower room, providing private retreat spaces ideal for older children, guests, or home office use. Outside, the property truly excels with off-street parking for several vehicles and driveway access to an impressive 29-foot detached garage and workshop - perfect for car enthusiasts, hobbyists, or additional storage. The substantial approx. 70-foot rear garden offers magnificent private outdoor space for family activities, entertaining, or peaceful relaxation. This exceptional property combines versatile accommodation, premium location near excellent schools, and substantial parking and workshop facilities, making it perfect for families seeking space and flexibility. An internal viewing is essential to fully appreciate the accommodation on offer.

Accommodation Comprising

Double glazed door leading to storm porch with double glazed windows to front and side, tiled flooring, contemporary composite front door to...

Entrance Hall



Obscure double glazed window to side, staircase to first floor, radiator, wood flooring, built in storage and airing cupboards, picture rail, doors off to...



Lounge/ Diner 27'6 x 12'2 < 9'1 (8.38m x 3.71m < 2.77m)



Dining Area



Double glazed bay window to front with fitted shutters, radiator, wood flooring, smooth plastered covered ceiling, opening to...

Lounge Area



Double glazed french doors and windows to rear garden, multi fuel log burner with slate tiled hearth, wood flooring, smooth plastered covered ceiling...



Kitchen/ Breakfast Room 13'4 x 12'3 (4.06m x 3.73m)



Range of fitted base units with solid wood working surfaces over, inset single drainer sink unit, gas range cooker with stainless steel extractor canopy over, space and plumbing for washing machine, space for fridge/ freezer, matching range of wall mounted units, glazed splashbacks, cabinet underlighters, radiator, wood flooring, smooth plastered covered ceiling, double glazed windows to side and rear, obscure double glazed door to side...



Bedroom 1 13'3 x 12'1 (4.04m x 3.68m)



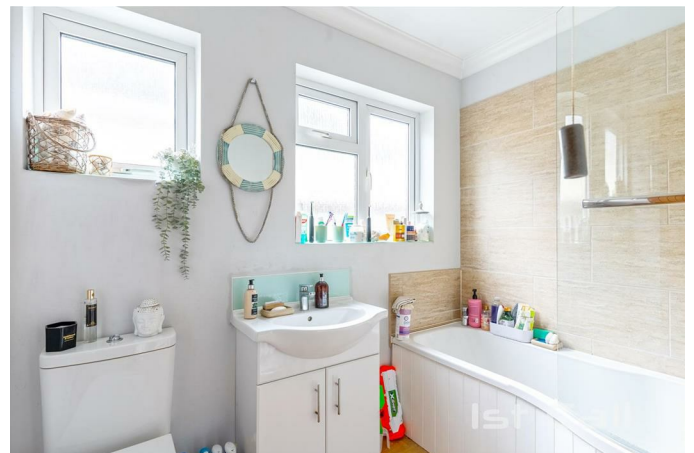
Double glazed bay window to front with fitted shutters, additional feature obscure lead lite glazed window to side, radiator, wood flooring, coved ceiling...



Bedroom 4 8'8 x 7'9 (2.64m x 2.36m)

Double glazed window to side, radiator, wood flooring...

Bathroom 8'2 x 5'7 (2.49m x 1.70m)



White suite comprising panelled 'P' bath with shower unit over and glazed shower screen, vanity wash hand basin, low level W.C., heated towel rail/ radiator, tiled splashbacks, wood flooring, smooth

plastered ceiling, two obscure double glazed windows to side...

First Floor Landing

Doors off to...

Bedroom 2 18'3 x 6'8 (5.56m x 2.03m)



Double glazed window to rear, radiator, wood flooring, access to eaves storage cupboard, loft access...

Bedroom 3 12'9 x 6'10 (3.89m x 2.08m)

Double glazed window to rear, radiator, wood flooring, access to eaves storage cupboard...

Shower Room



Suite comprising glazed corner shower cubicle, vanity wash hand basin, low level W.C., vertical radiator, tiled splashbacks and flooring, smooth plastered ceiling with extractor fan, door providing access to large eaves storage space...

Externally



Front Garden



Paved providing off street parking for several vehicles, gates to side driveway and giving access to...

Detached Garage /Workshop 29' x 8'2 (8.84m x 2.49m)



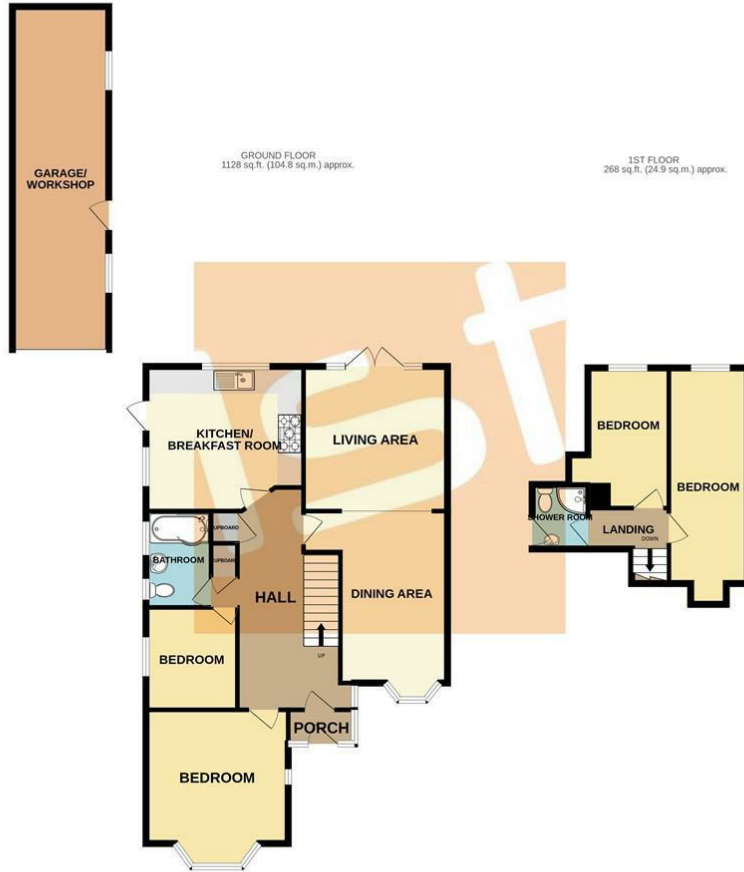
With up & over door, power & light connected, two windows and double glazed door to garden...

Rear Garden



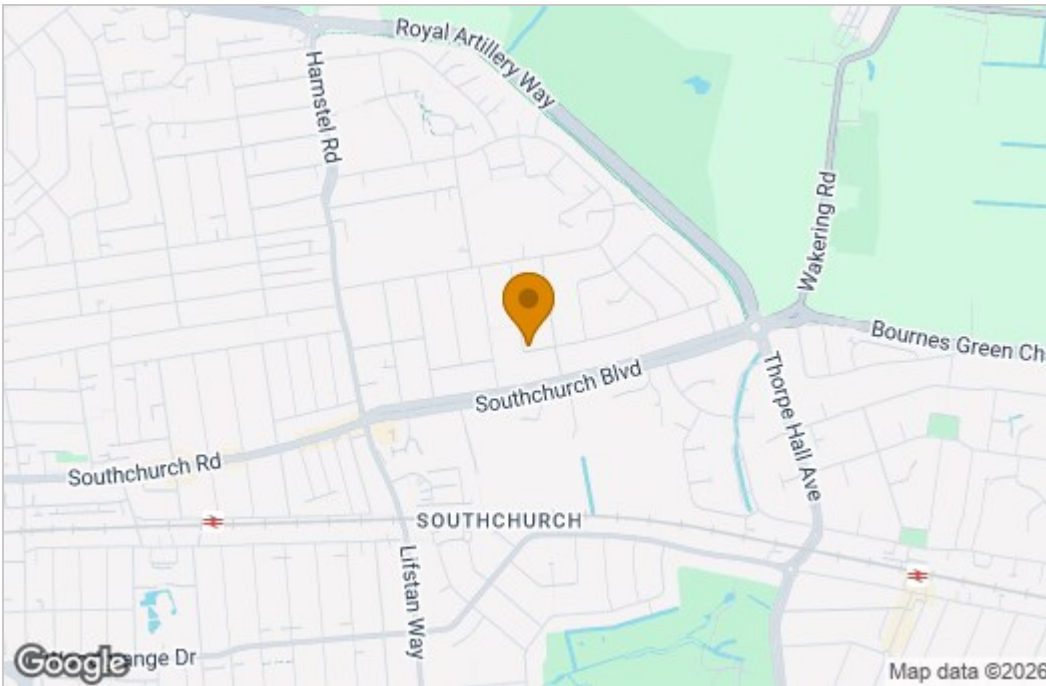
Approx. 70' in depth comprising Indian Sandstone paved patio area, lawn with flower/ shrub border, further raised timber decked patio area with timber shed and greenhouse, outside tap...

Floor Plan

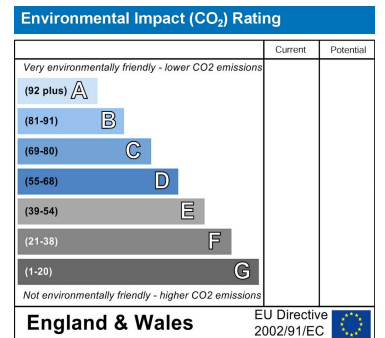
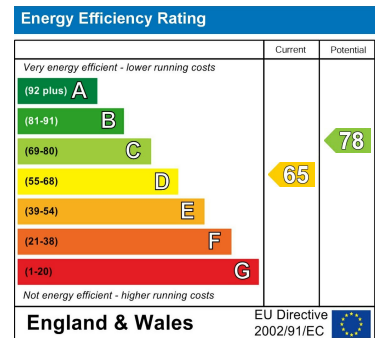


Whilst every attempt has been made to ensure the accuracy of the floorplan contained here, measurements of doors, windows, rooms and any other items are approximate and no responsibility is taken for any error, omission or mis-statement. This plan is for illustrative purposes only and should be used as such by any prospective purchaser. The services, systems and appliances shown have not been tested and no guarantee as to their operability or efficiency can be given.
Made with Metropix ©2026

Area Map



Energy Efficiency Graph



These particulars, whilst believed to be accurate are set out as a general outline only for guidance and do not constitute any part of an offer or contract. Intending purchasers should not rely on them as statements of representation of fact, but must satisfy themselves by inspection or otherwise as to their accuracy. No person in this firm's employment has the authority to make or give any representation or warranty in respect of the property.