



27 Athlone Court,

Stocksfield Road | | Walthamstow | E17 3LW

£1,200 PCM



STRETTONS

Key features

- Large Studio Flat
- Located within a Purpose Built Block
- Second Floor Flat
- Fitted Kitchen with Appliances
- Three Piece Bathroom Suite
- Double Glazed Windows Throughout
- Electric Storage Heating
- Within 0.3 Mile to Wood Street Station (Overground Line to London Liverpool Street)
- Available Now
- EPC Rating C

Description

Strettons are delighted to present this second-floor studio apartment, within a purpose-built block on Athlone Court, Stocksfield Road, Walthamstow, E17.

The property features a separate sleeping area, providing a sense of privacy and comfort. The generously sized reception room offers ample space for relaxation and entertaining. The fitted kitchen is equipped with essential appliances. The three-piece bathroom suite adds to the convenience of this well-appointed flat.

Residents will appreciate the benefits of electric storage heating and double-glazed windows, ensuring warmth and tranquillity throughout the year. Additionally, parking is available through a residents' permit, providing ease of access for those with vehicles.

The location is particularly advantageous, with Wood Street station just a short distance away, offering excellent transport links via the overground line (Zone 4). The area is well-connected to major roads, including the A406, A12, and M11.

Tenancy Fees

New Assured Shorthold

Tenancies Signed on or after 1st June 2019

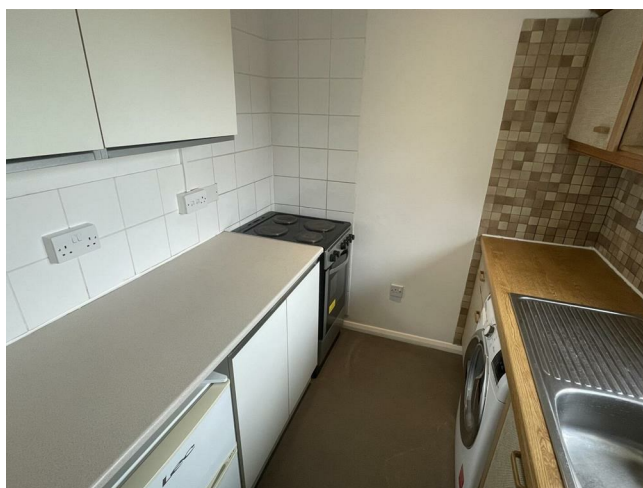
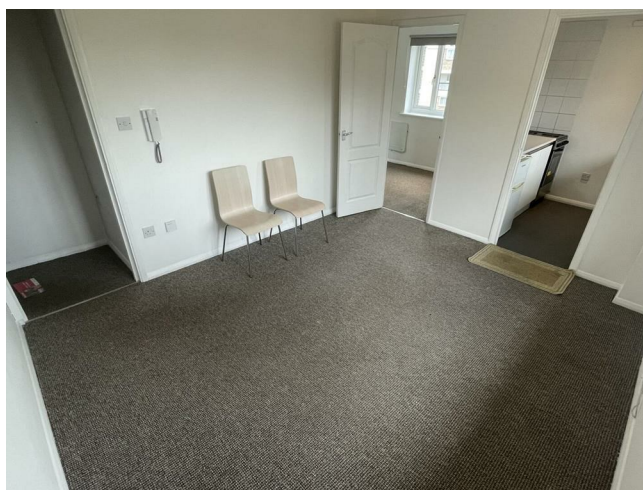
Holding deposit - 1 week's rent

Security deposit - 5 week's rent (rent of £50,000 or over per annum - 6 week's rent)

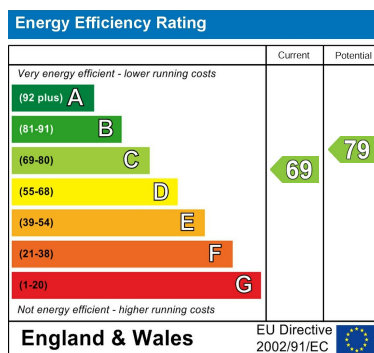
Unpaid rent - 3% above Bank of England base rate from Rent Due Date after 14 days in arrears.

Lost keys - Cost of replacement key or other security device/lock replacement/locksmith.

Directions







Council Tax Band B EPC Rating C



69 Paul Street
London
London
EC2A 4NG
02085 094406

michael.mercer@strettons.co.uk