



Gisbey House

Union Lane, Isleworth, TW7

£369,950

Oakhill are pleased to present this spacious and very well presented two double bedroom first floor apartment in the ever popular Union Lane development. Superbly located for access to Syon Lane train station, the beautiful green spaces of Syon Park, the river and excellent local schools and amenities. The property offers a spacious and welcoming hallway with built in storage, two large double bedrooms, a good sized modern family bathroom and large open-plan living room with direct access to a private balcony. The property also benefits from gas central heating, double glazing, beautifully kept communal areas and a secure entry system. Heating and hot water are included in the service charge.

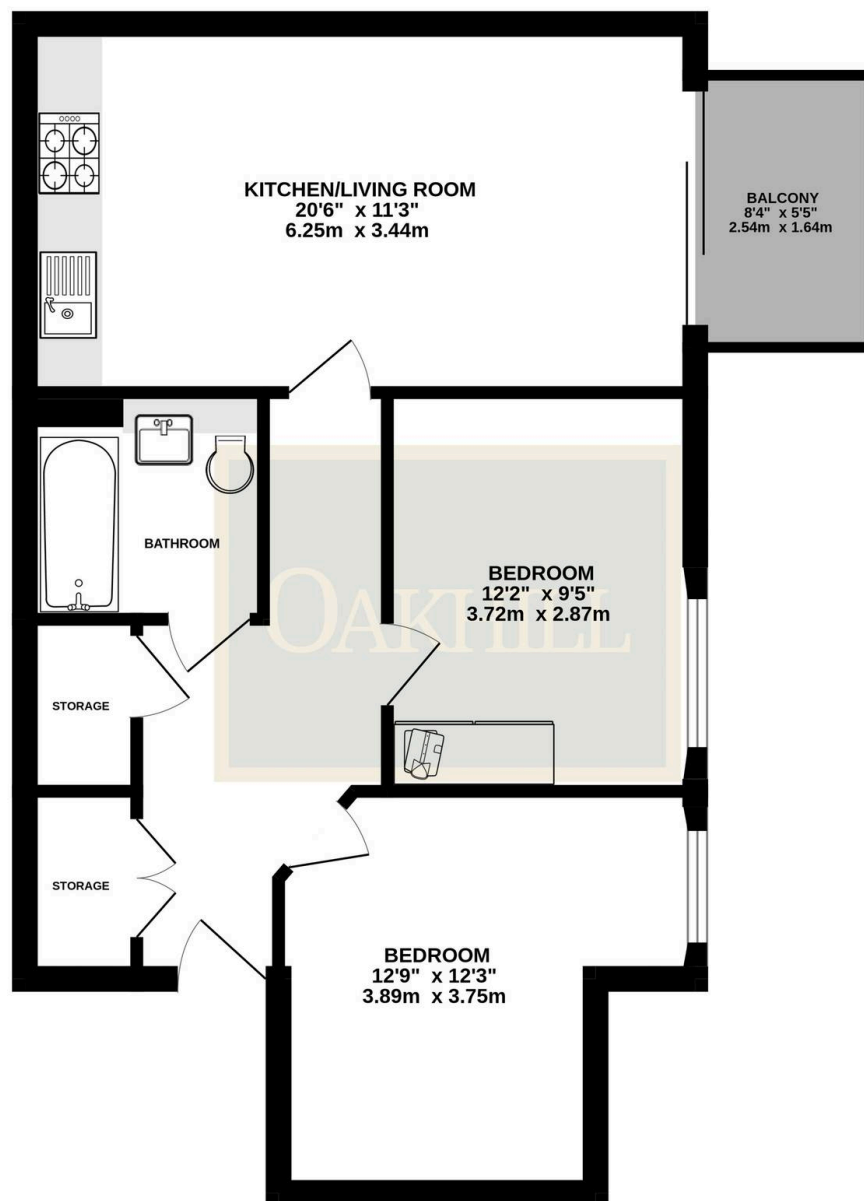
- Beautifully Presented Two Double Bedroom First Floor Apartment
- Large Private Balcony
- Heating & Hot Water included in Service Charge
- Excellent Transport Links - Ideally Located for Syon Lane Station
- Ample Internal Storage
- Modern Family Bathroom
- Popular Development



SCAN HERE
FOR
PROPERTY
DETAILS



FIRST FLOOR
661 sq.ft. (61.4 sq.m.) approx.



TOTAL FLOOR AREA : 661 sq.ft. (61.4 sq.m.) approx.

Whilst every attempt has been made to ensure the accuracy of the floorplan contained here, measurements of doors, windows, rooms and any other items are approximate and no responsibility is taken for any error, omission or mis-statement. This plan is for illustrative purposes only and should be used as such by any prospective purchaser. The services, systems and appliances shown have not been tested and no guarantee as to their operability or efficiency can be given.
Made with Metropix ©2026

OAKHILL