



Boston Gardens, TW8

£300 Per week

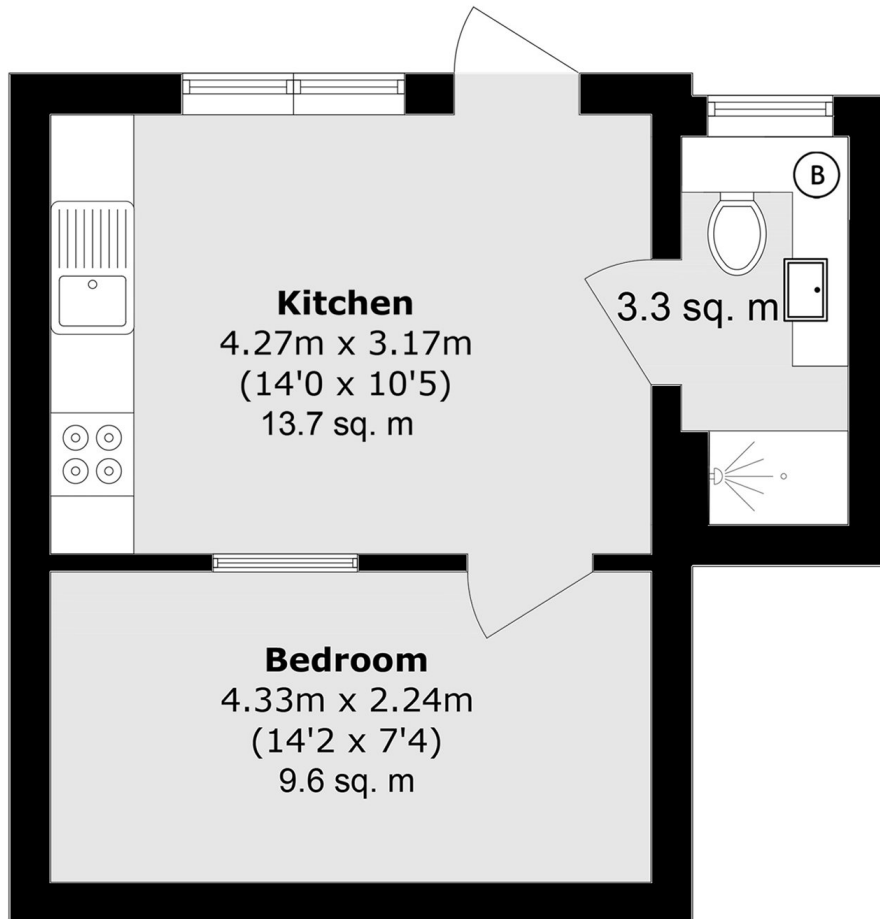
Newly built large studio apartment with a sleek, modern finish throughout. Designed for comfort and practicality, this stylish space is perfect for a single person seeking contemporary living in a well-presented home. All bills are included, offering convenient and hassle-free living.

Boston Gardens is situated close to local amenities including an array of shops and is also conveniently located for Boston Manor Playing fields. The property is approximately 0.3 Miles from Boston Manor tube station (Piccadilly line)

Features

- £200 For Bills
- Spacious Studio
- Modern Bathroom
- Furnished
- Fitted Kitchen
- Close to Station

Boston Gardens,
Brentford, TW8



Total area (approx.): 27.9 sq. m (632.9 sq. ft)