



Streamdale Road, W3

£425,000

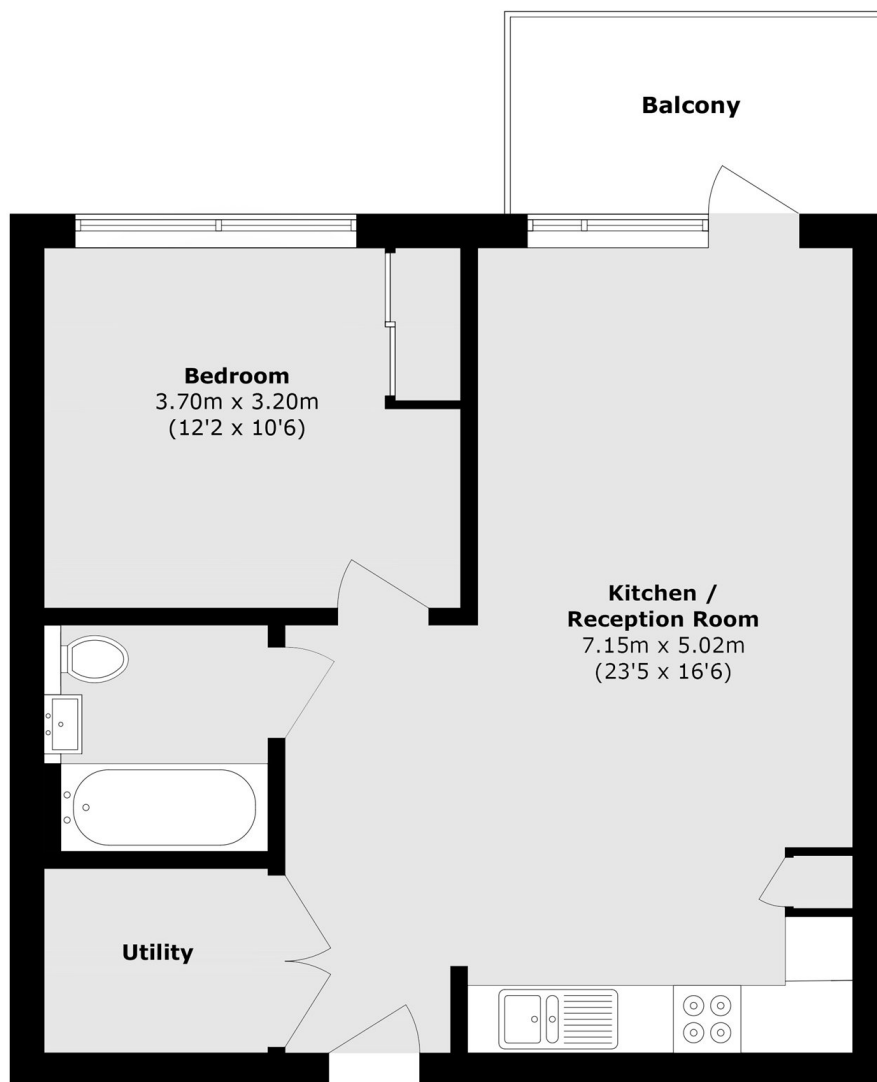
A bright modern apartment situated on the ninth floor within the popular Acton Gardens development moments from South Acton and Acton Town Station. The apartment has a large double bedroom a family bathroom and additional storage in the entrance Hallway. The open-plan kitchen and reception room has direct access out onto the private balcony overlooking london. The property also has secure bike storage on the ground floor.

Within a two minute walk from Acton Town tube station (District and Piccadilly lines) and under half a mile from South Acton station (Overground). Acton Gardens is walking distance from Chiswick Business Park as well as vibrant eateries and cafes located within Chiswick.

Features

- One Double Bedroom
- Ninth Floor
- Private Balcony
- Residents Gardens
- Chiswick Boarders
- No Onward Chain

Streamdale Road,
London, W3



Total area (approx.): 51.3 sq. m (552.2 sq. ft)

Balcony area (approx.): 5.7 sq. m (61.4 sq. ft)