



Broomwood Road, SW11

£7,950 Per calendar month

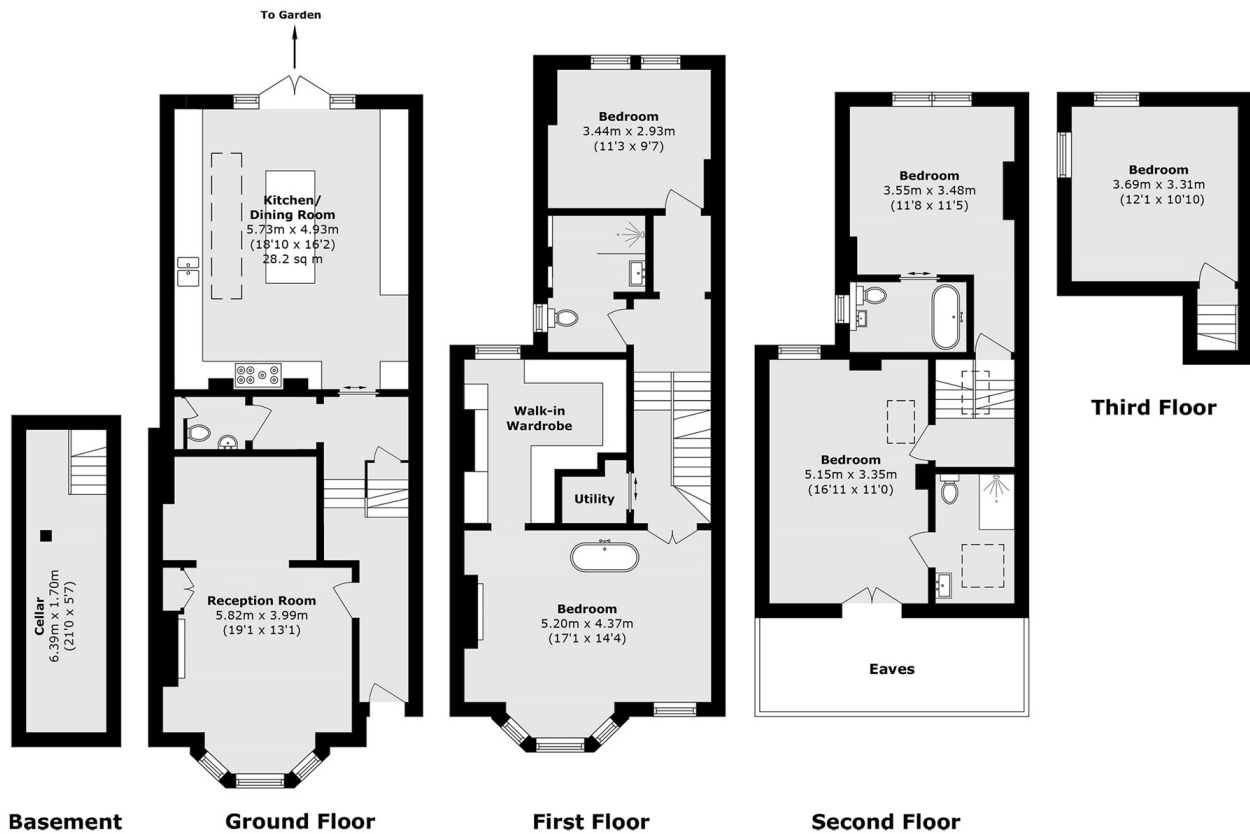
A beautifully proportioned five-bedroom family home arranged over five floors. Offering an exceptional balance of living and entertaining space in this highly sought after residential location.

Broomwood Road is ideally located for shops, cafés, restaurants and bars of Northcote Road, Battersea Rise and St John's Road. The area is also renowned for its excellent schools and access to the open spaces of Clapham Common, Wandsworth Common and Battersea Park.

Features

- Victorian House
- Five Double Bedrooms
- Recently refurbished
- Large Kitchen
- Double Reception Room
- Private Garden

Broomwood Road, London, SW11



Total area (approx.): 197.5 sq. m (2125.8 sq. ft)
(Excluding Eaves)