



Jamaica Road, SE16

£300,000

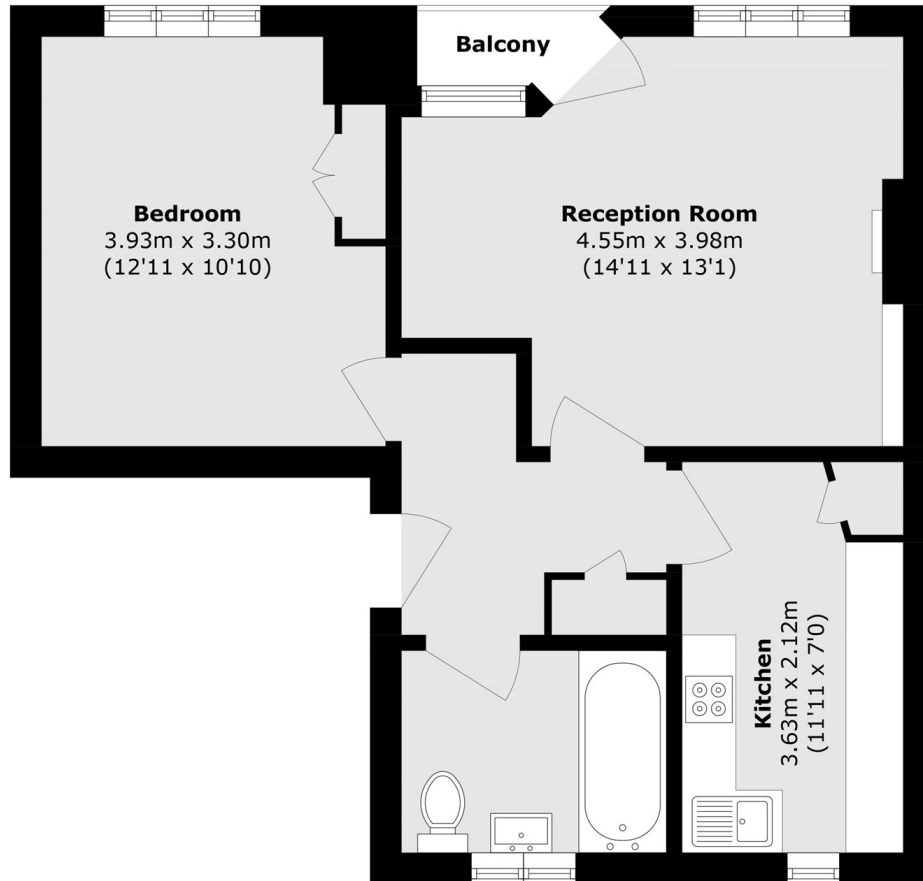
Moments from Southwark Park, this one bedroom flat is immaculately presented and has a bright living space, modern kitchen and bathroom, private balcony, ample storage and residents parking.

Pynfolds is located only 0.2 miles from Bermondsey station and 0.2 miles from Rotherhithe station, offering excellent transport links to all of London. A wide range of shops, café's, food markets and restaurants are close by.

Features

- One Double Bedroom
- Private Balcony
- Residents Parking
- Chain Free
- Excellent Location
- Great Condition

Jamaica Road, London, SE16



Ground Floor

Total area (approx.): 49.8 sq. m (536.0 sq. ft)

Balcony area (approx.): 1.8 sq. m (19.4 sq. ft)