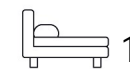




Living
made
better

Galley House
Beckton, E16 2UB



Asking Price £325,000

Galley House, Beckton, E16 2UB

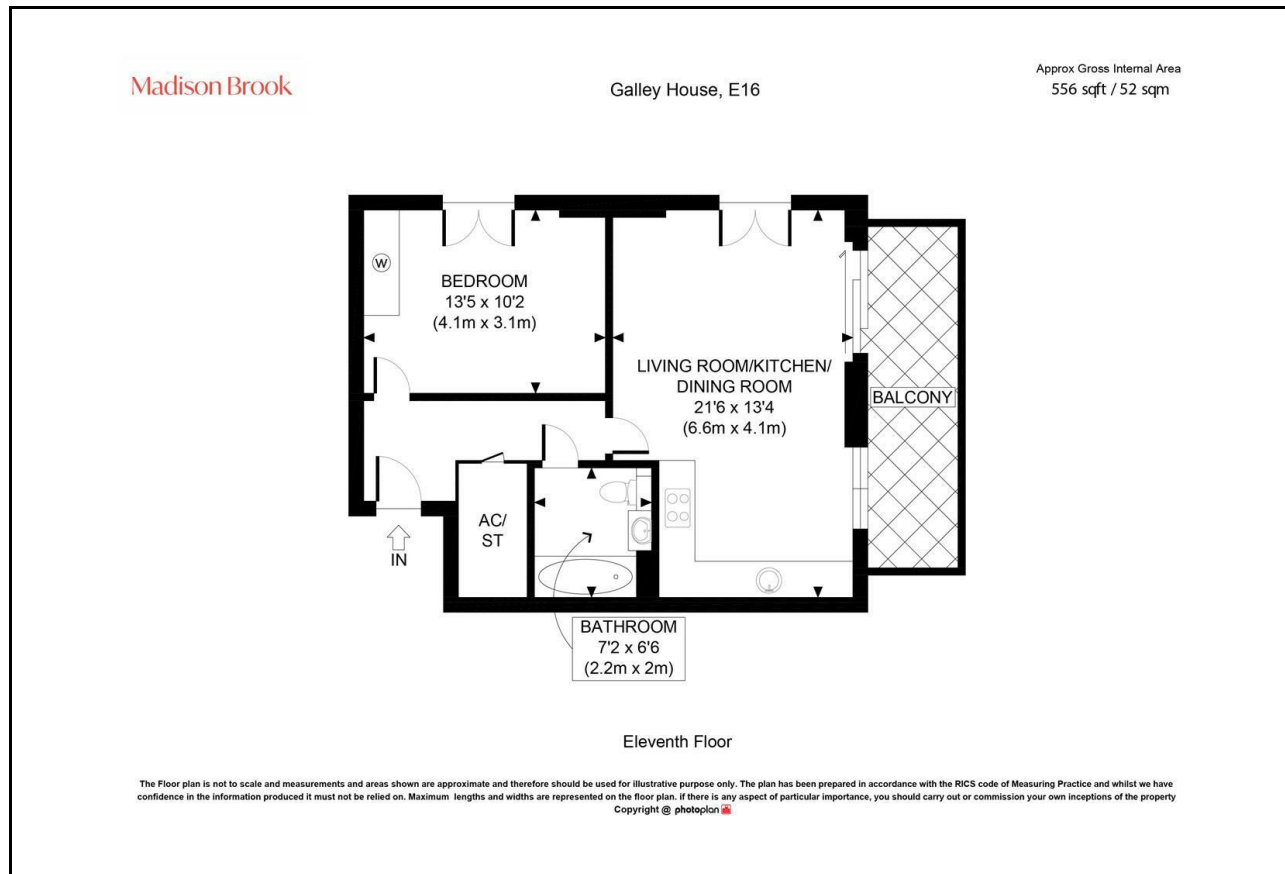
Madison Brook

Property Summary

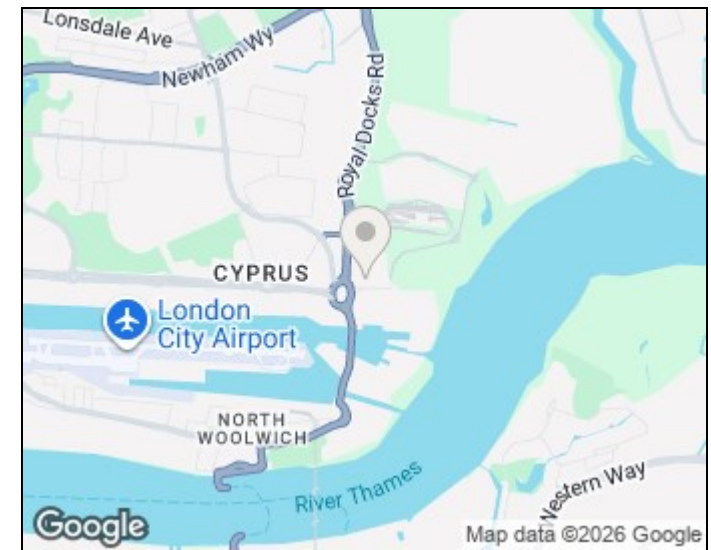
Situated on the 11th floor of Galley House, this one-bedroom apartment offers approximately 556 sq.ft. of well-designed living space, comprising a bright and spacious open-plan living/kitchen/dining area with modern finishes and integrated appliances, a private balcony with river views, a generous double bedroom and a contemporary bathroom. Ample storage throughout. Residents benefit from a 24-hour concierge service. Secure underground parking available via separate negotiation. Ideally located just moments from Gallions Reach DLR and the retail park.

Lease Remaining: 240 years | Service Charge: £2442.56 pa | Ground Rent: £300 pa

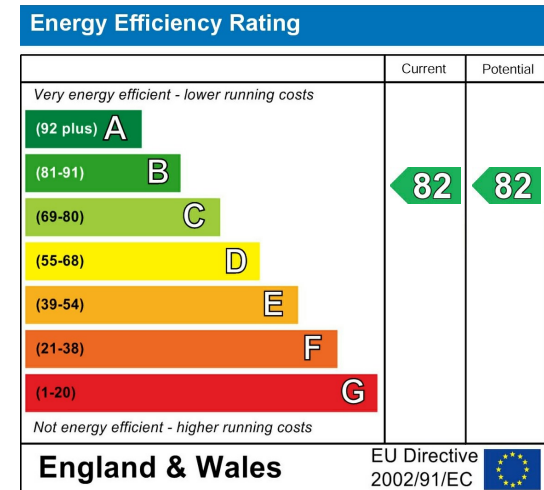
Floorplan



Area Map



Energy Efficiency Graph



These particulars, whilst believed to be accurate are set out as a general outline only for guidance and do not constitute any part of an offer or contract. Intending purchasers should not rely on them as statements of representation of fact, but must satisfy themselves by inspection or otherwise as to their accuracy. No person in this firm's employment has the authority to make or give any representation or warranty in respect of the property.

Unit B 20 Western Gateway, Royal Victoria
Dock, London, E16 1BS
Tel: 020 3946 6000 Email:
docklands@madisonbrook.com
<https://madisonbrook.com/>