

## Avonmore Gardens, W14

£2,700 Per calendar month

This large two double bedroom property is based in a private gated mansions block in Olympia. The property has a great entertaining space, a separate eat in kitchen and great storage throughout.

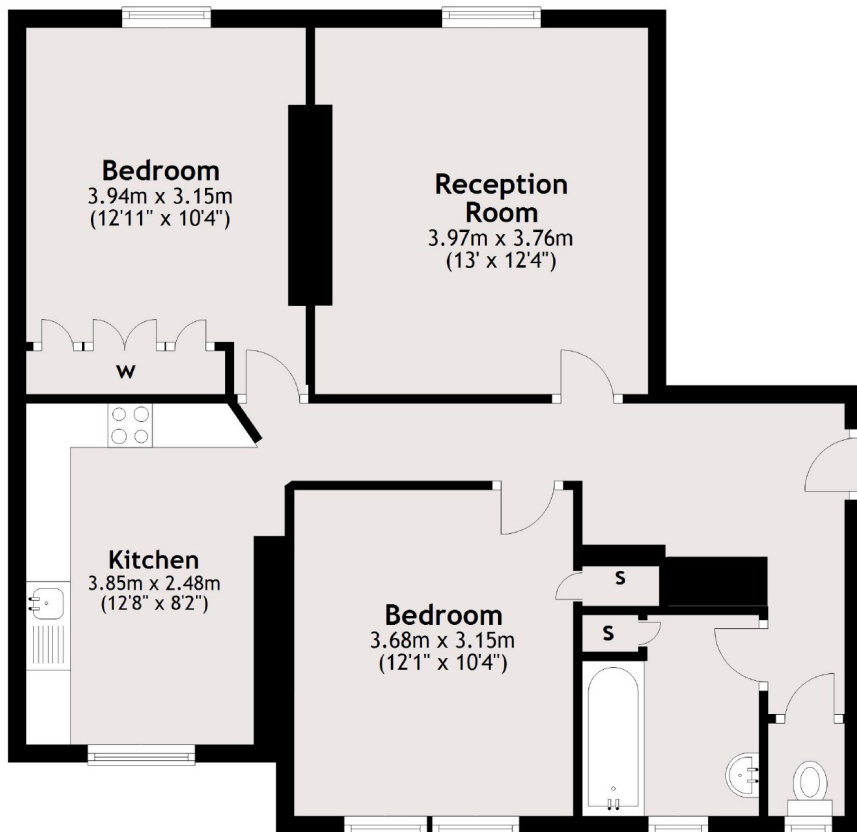
Avonmore Gardens is close to all the transport links, shops, cafés, bars and restaurants in Kensington Olympia, West Kensington, High Street Kensington and Hammersmith.

### Features

- Two Double Bedrooms
- Eat-in Kitchen
- Separate Reception
- Mansions Block
- Gated
- Close to Transport

# Avonmore Gardens, London, W14

## Fourth Floor



Total area: approx. 69.5 sq. metres (748.2 sq. feet)