



Coram Street, WC1N

£800,000

This is a fantastic two bedroom flat located on the fifth floor of this 1930s portered mansion block. The property benefits from heating and hot water included in the service charge. The property has been let as a three bed and would make a fantastic rental investment.

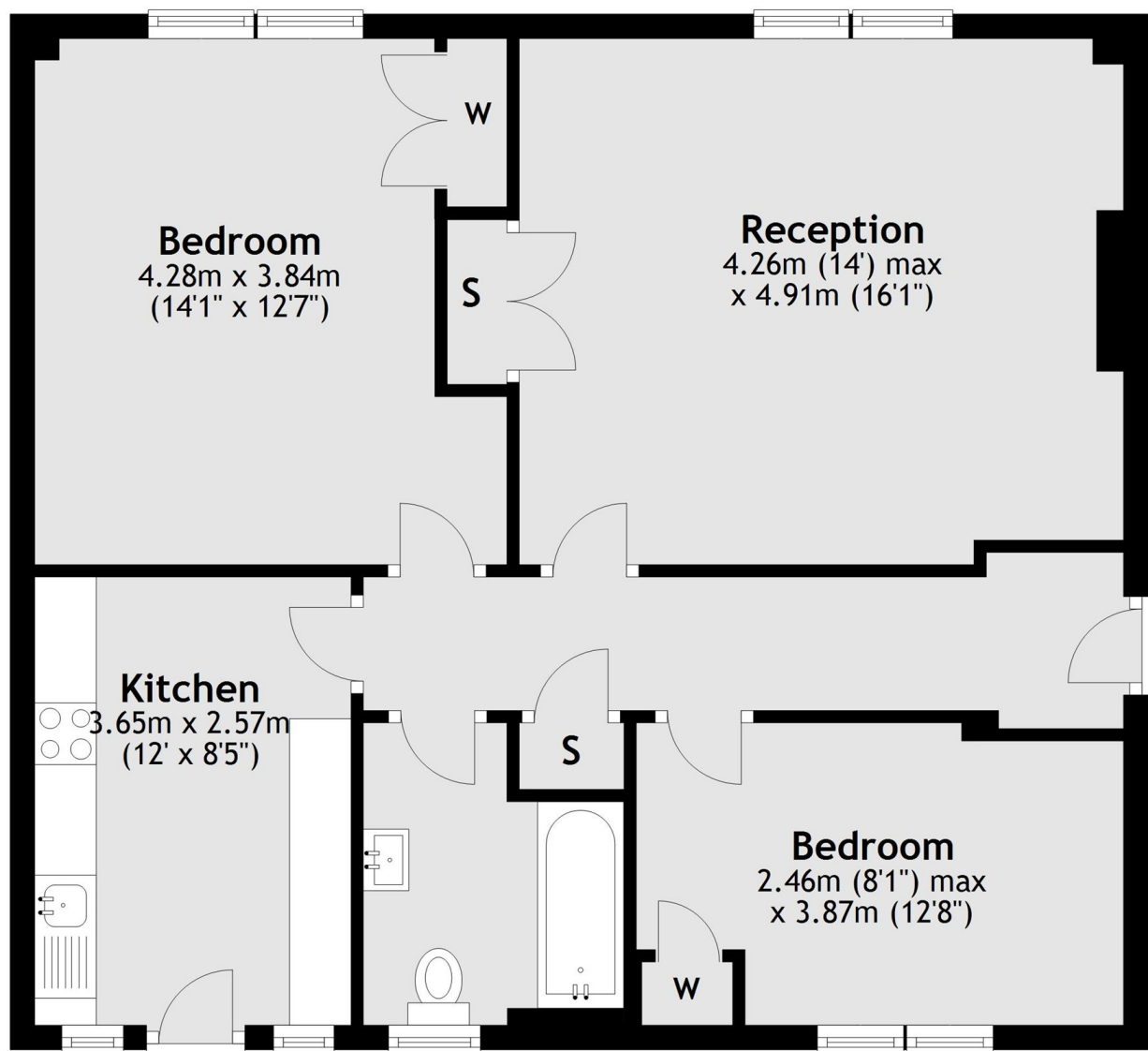
The flat is just moments from Russell Square tube station and the Brunswick shopping centre which is home to an array of shops and restaurants including a large Waitrose supermarket.

Features

- Lift
- Porter
- Fifth Floor
- Long Lease
- Excellent Condition
- Close to Transport

Coram Street, London, WC1N

Fifth Floor



Total area: approx. 71.1 sq. metres (764.9 sq. feet)