



## Cromwell Road, SW7

£595 Per week

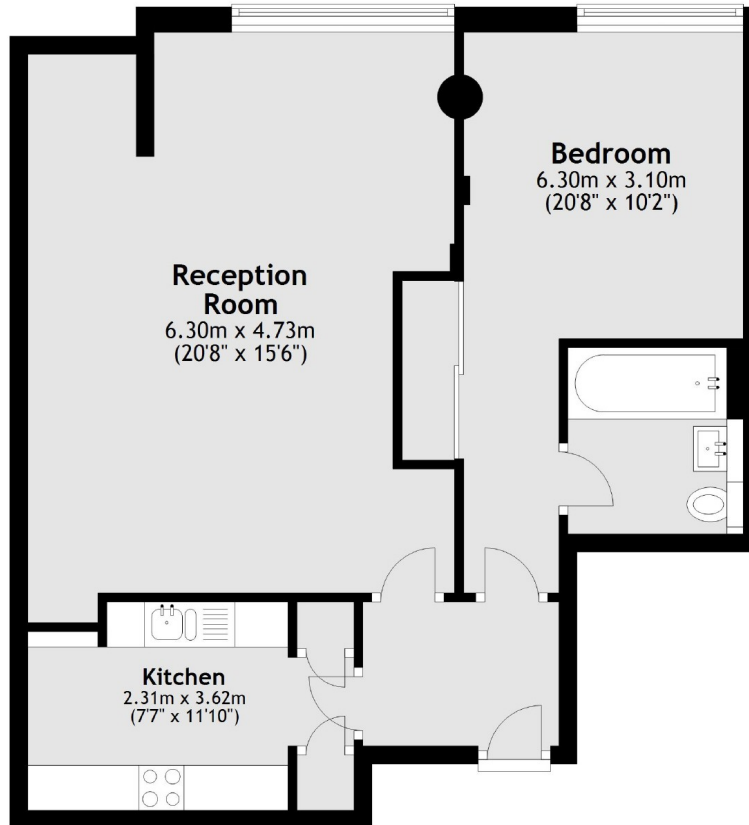
The property is finished to an exceptional standard throughout and has an entrance hall, reception room and refurbished separate kitchen with integrated appliances.

Further benefits include lift access, brand new Harbour Club gym just next door and a location within a mile of Gloucester Road underground station, Hyde Park and a wealth of shops and amenities.

### Features

- One Double Bedroom
- Seventh Floor (Lift Access)
- Wooden Flooring
- 24hr Porterage
- Separate Kitchen

Cromwell Road,  
London, SW7



Total area: approx. 60.8 sq. metres (654.5 sq. feet)