

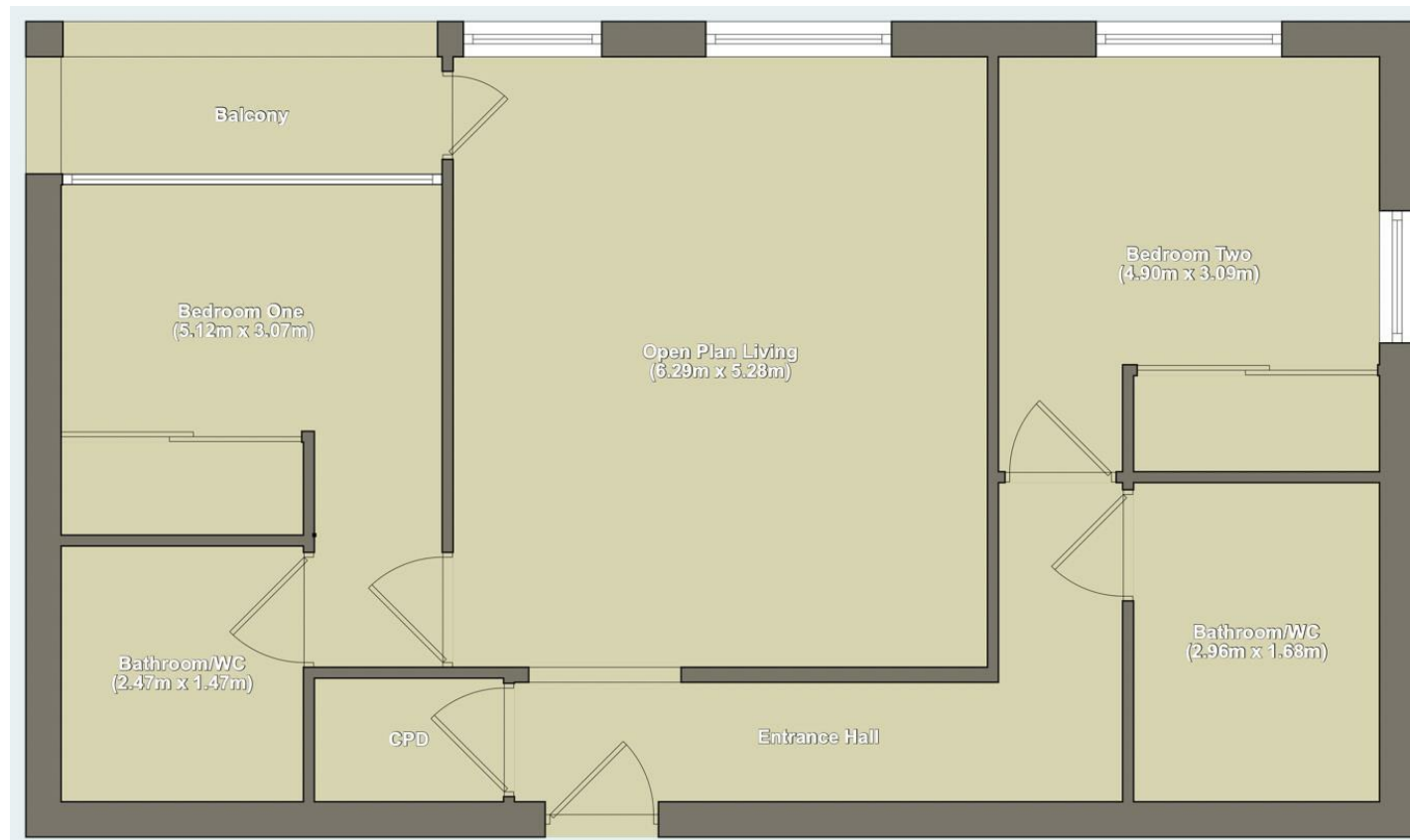
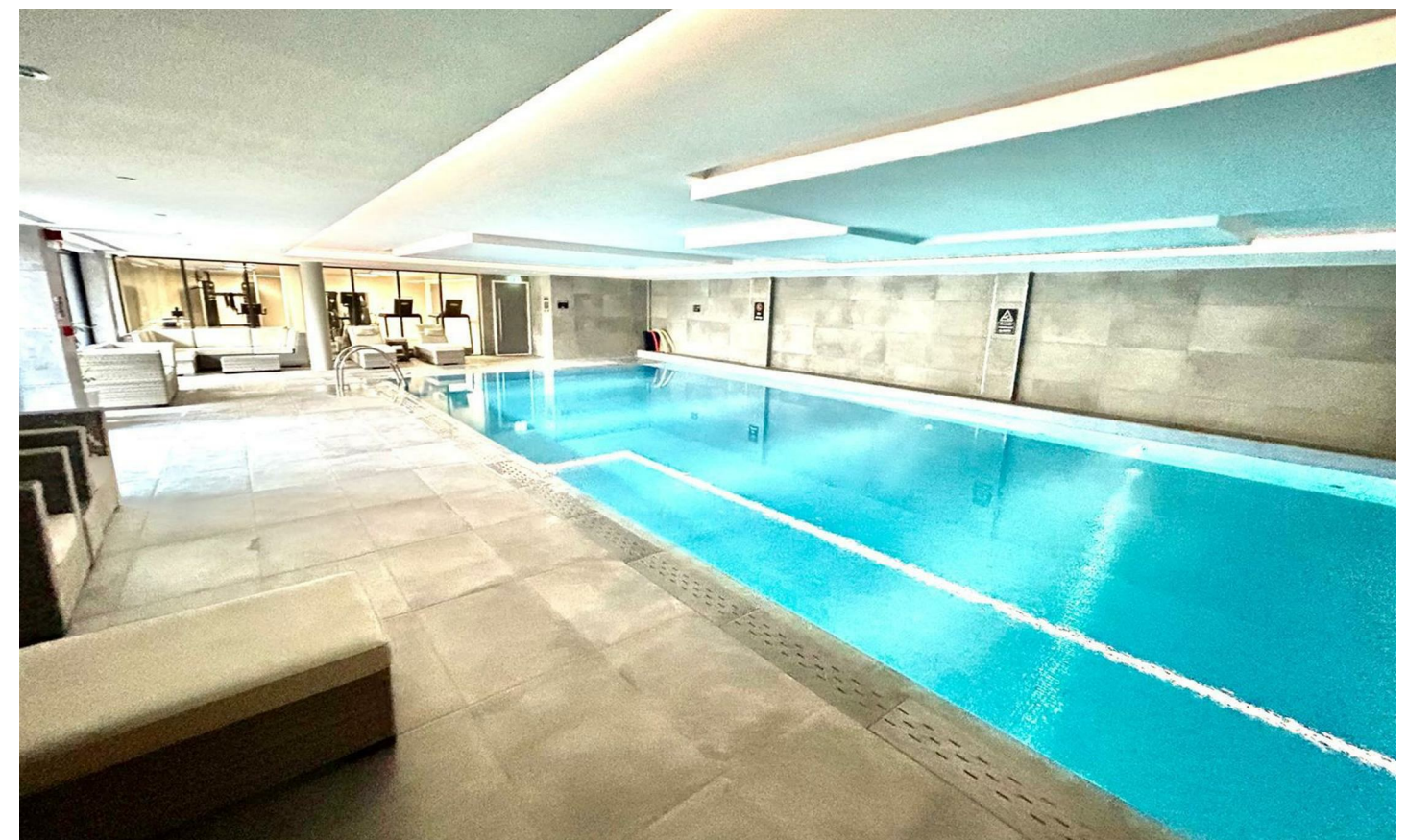
### Viewings

Viewings by arrangement only.  
 Call 0114 483 0038 to make an appointment.

### Vendors Comments

Add text here

Energy Efficiency Rating		Current	Potential
Very energy efficient - lower running costs			
(92 plus) <b>A</b>			
(81-91) <b>B</b>		82	82
(69-80) <b>C</b>			
(55-68) <b>D</b>			
(39-54) <b>E</b>			
(21-38) <b>F</b>			
(1-20) <b>G</b>			
Not energy efficient - higher running costs			
<b>England &amp; Wales</b>		EU Directive 2002/91/EC	



## Apartment 401, Hallam Towers 272A Fulwood Road, Sheffield, S10 3AZ

£1,850 Per month

- Fourth floor apartment in the coveted Hallam Towers development
- Two double bedrooms, one with en-suite
- Lift access to all levels
- Excellent, highly sought after location
- EPC Grade B
- On-site swimming pool and fitness suite
- Allocated car parking space
- Balcony with far reaching views
- Viewing highly recommended

# Apartment 401, Hallam Towers 272A Fulwood Road, Sheffield S10 2A7

Occupying an enviable FOURTH FLOOR position in the coveted HALLAM TOWERS development is this TWO DOUBLE BEDROOM apartment with a BALCONY.

Benefiting from full use of the EXTENSIVE ON-SITE AMENITIES, which includes a state of the art FITNESS SUITE and SWIMMING POOL.

This property is ideal for a professional couple and is located conveniently for a host of local amenities and public transport links.

An internal inspection is highly recommended to appreciate the size and standard of accommodation on offer!  
EPC Grade B.



Council Tax Band: C

