

# Stanley Avenue

FILTON

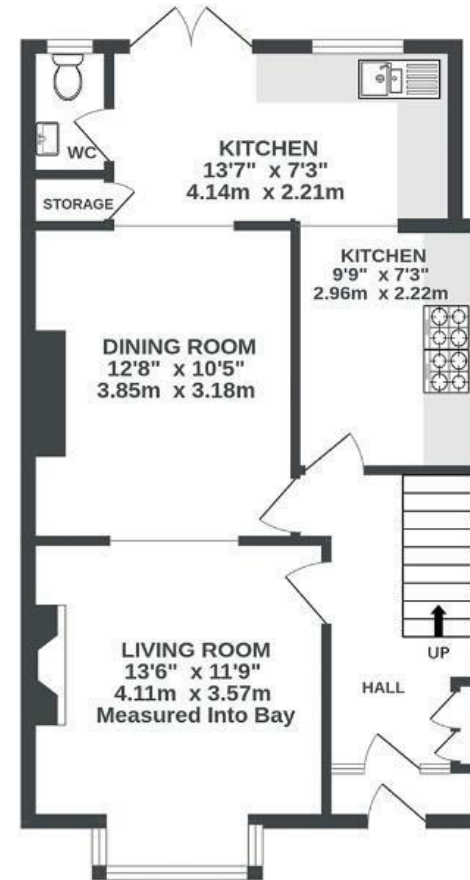
APPROXIMATE FLOOR AREA  
89.7 SQM / 965 SQFT



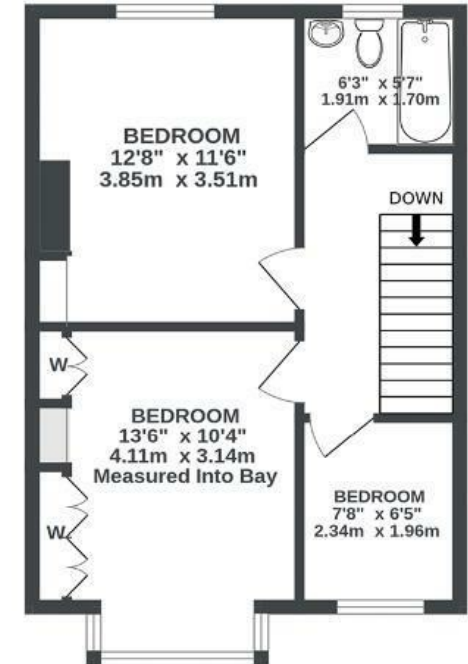
GARAGE (NOT INC IN TOTAL  
SQ.M)  
0 sq.ft. (0.0 sq.m.) approx.



GROUND FLOOR  
551 sq.ft. (51.2 sq.m.) approx.



1ST FLOOR  
414 sq.ft. (38.5 sq.m.) approx.



**Boardwalk**

# Stanley Avenue

FILTON, BRISTOL



£350,000



3 Bedrooms



BS34 7NQ



2 Bathrooms

*"We absolutely love living here, we're very centrally located but the street itself is so quiet. There's cafes, gyms, restaurants and shops within a short walking distance. The park is a 2 minute walk from the house which has a great playground for the kids. You never have to worry about finding a parking space on the street. Because of the direction of our garden, you can enjoy the sunshine all day in the garden and our hedge in spring is full of chirping birds which makes me feel closer to nature"*

