

WE VALUE



YOUR HOME



Bonnars Mead, Benson
£1,850 PCM



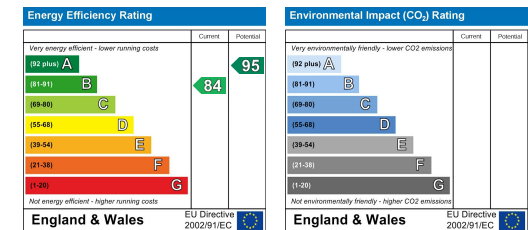
Available from Early July 2026 for Long Term Let, Un-Furnished

Beautifully-presented throughout with a modern and stylish decor, this three-bedroom family home is located within the family friendly area of Hopefield grange and features a generous kitchen/diner with integrated appliances, a light and spacious lounge with bespoke storage, a cloakroom, an en-suite to the master bedroom and an enclosed, easily maintainable rear garden. With plenty of built-in storage and both off-street parking for two vehicles and a garage, this property is ideal for those looking to live close to Benson's many amenities and stunning river and countryside walks.



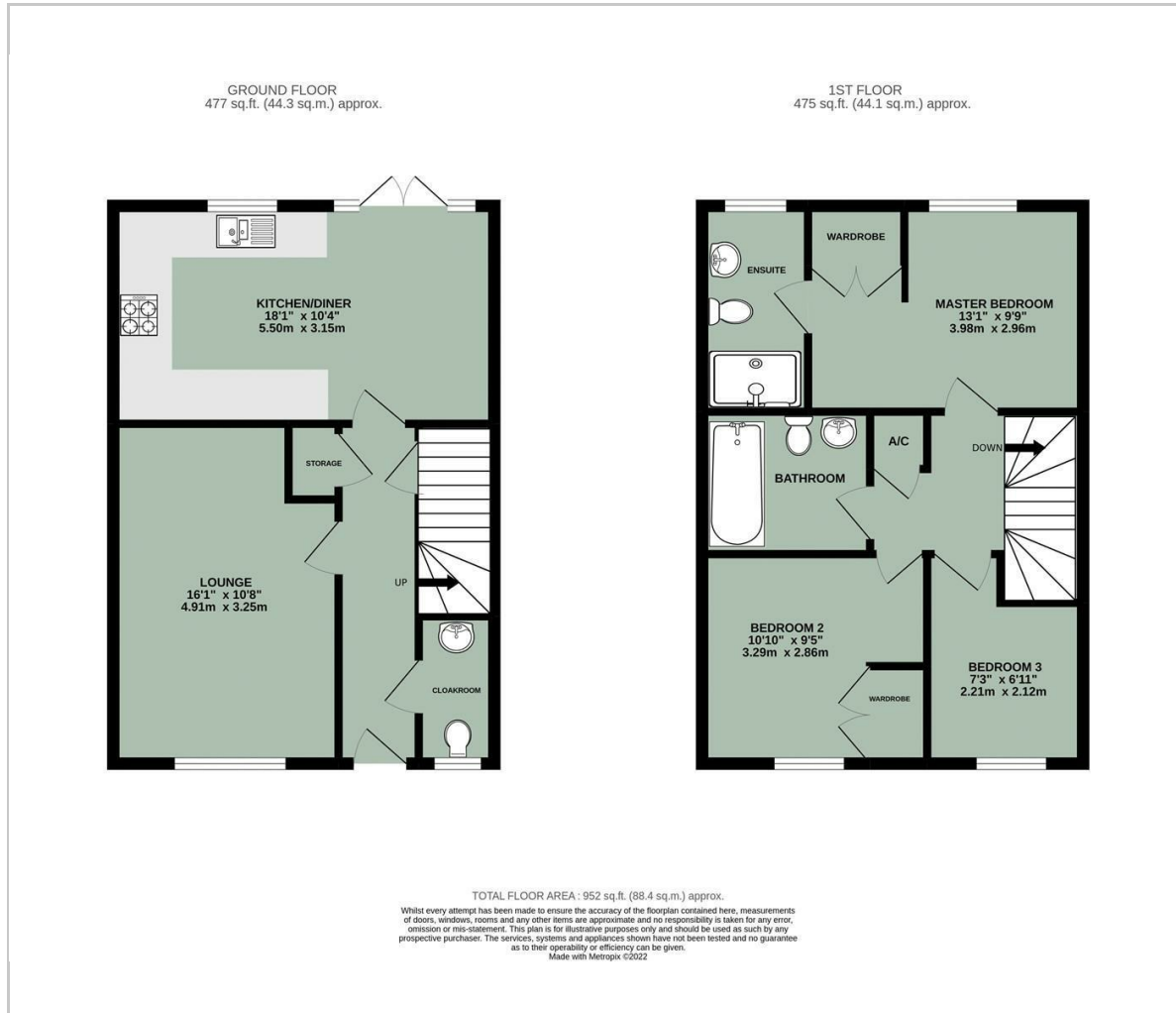


- AVAILABLE FROM EARLY JULY 2026 FOR LONG-TERM LET, UNFURNISHED
- EN-SUITE TO THE MASTER BEDROOM
- SPACIOUS KITCHEN/DINER WITH INTEGRAL APPLIANCES
- ENCLOSED REAR GARDEN
- GARAGE & OFF-STREET PARKING
- CLOAKROOM
- WELL-PRESENTED THROUGHOUT
- CLOSE TO VILLAGE AMENITIES
- THREE BEDROOM FAMILY HOME
- EV CHARGING POINT

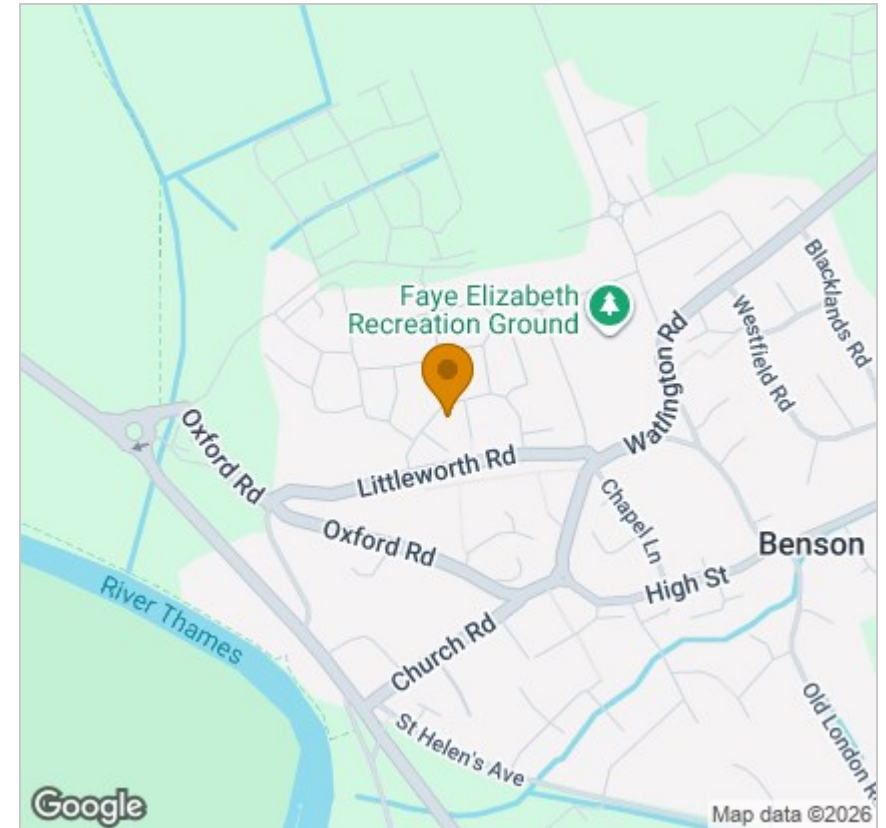


Energy Efficiency Graph

Floor Plan



Area Map



Viewing

Please contact our In House Sales & Lettings Office on 01491 839999 opt.1 if you wish to arrange a viewing appointment for this property or require further information.

These particulars, whilst believed to be accurate are set out as a general outline only for guidance and do not constitute any part of an offer or contract. Intending purchasers should not rely on them as statements of representation of fact, but must satisfy themselves by inspection or otherwise as to their accuracy. No person in this firm's employment has the authority to make or give any representation or warranty in respect of the property.

28 St Martins Street, Wallingford, Oxfordshire, OX10 0AL
Tel: 01491 839999 opt.1 Email: sales@inhouseestateagents.co.uk www.inhouseestateagents.co.uk