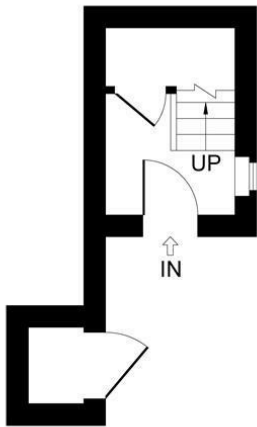


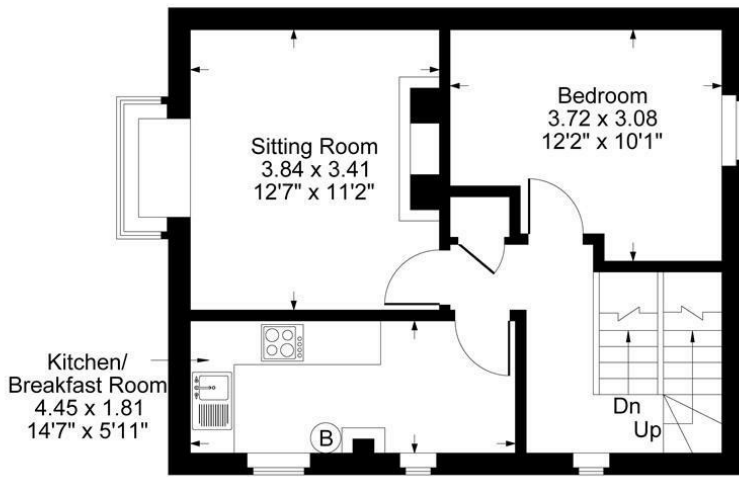
19 William Bliss Avenue, Chipping Norton



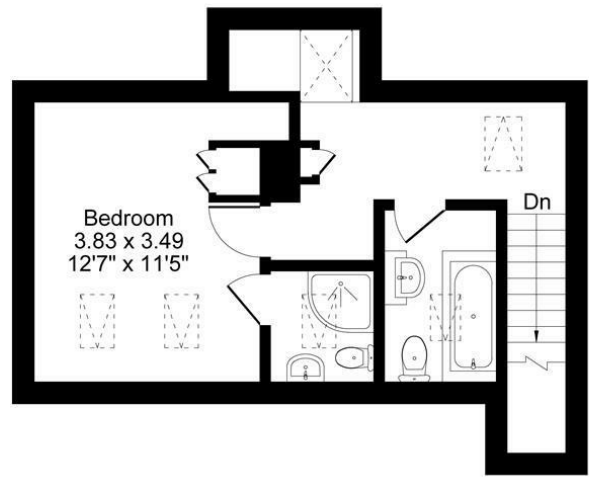


Ground Floor

Approximate Gross Internal Area
 Ground Floor = 4.53 sq m / 49 sq ft
 First Floor = 43.18 sq m / 465 sq ft
 Second Floor = 30.44 sq m / 328 sq ft
 Total Area = 78.15 sq m / 842 sq ft
 Illustration for identification purposes only,
 measurements are approximate, not to scale.



First Floor



Second Floor

A WELL-ARRANGED TWO-BEDROOM MAISONETTE IN CHIPPING NORTON WITH BRIGHT LIVING SPACES, FAR-REACHING VIEWS AND GARDEN.

The Property

This two-bedroom maisonette offers well-arranged accommodation across three levels, with light interiors and far-reaching views.

The property has its own private entrance, with a hallway and useful under stairs storage. Stairs rise to the first floor, where the main living space is arranged. The kitchen includes an electric hob and oven, integrated fridge, and enjoys a pleasant outlook. The living room features a bay window which brings in plenty of natural light, along with a fireplace and electric fire. Also on this level is a double bedroom.

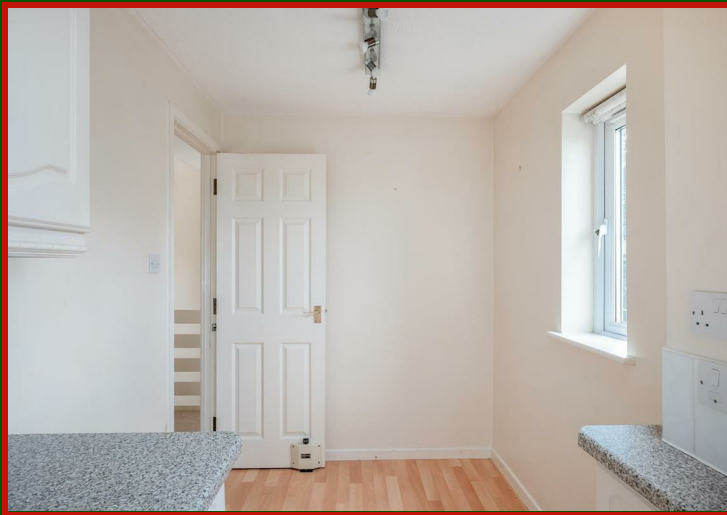
On the second floor there is a bathroom fitted with bath, vanity unit and WC, as well as a landing area with space for a washing machine. The second bedroom benefits from an ensuite shower room, built-in wardrobe, and elevated views.

Outside, there is a garden to the side of the property which offers scope for improvement, together with an outdoor storage cupboard. The property is in the process of having its lease extended, which will be completed prior to exchange of contracts.

William Bliss Avenue is within easy reach of Chipping Norton's town centre, which offers a wide range of shops, cafes, pubs and restaurants. The town also has a theatre, leisure centre and doctors' surgery, along with good transport links to Oxford, Banbury and beyond.

Situation

The bustling historic wool town of Chipping Norton is situated on the edge of the Cotswold Hills between the University City of Oxford, Spa town of Cheltenham & Shakespeare's Stratford upon Avon. It has a range of shopping, social and business facilities including an excellent local theatre, sports centre with indoor pool, lido and a Community Hospital + Health Centre. A Station on the Paddington to Worcester rail line can be found at nearby Kingham in addition to a regular bus service from Chipping Norton to Oxford. Local leisure options include a sports club, tennis courts, and attractions like Soho Farmhouse and Daylesford Organic Farm within easy reach.



**1 Church Street
Charlbury
Oxfordshire
OX7 3PW
Telephone: 01608 811146**

**10 Market Place
Chipping Norton
Oxfordshire
OX7 5NA
Telephone: 01608 644808**

Fairfax & Co is the trading style of Thomas Fairfax Limited
Registered in England No 07074456 Registered Office: 30 St Giles, Oxford, OX1 3LE
These particulars are offered on the understanding that all negotiations are conducted through this company. Neither these particulars nor oral representations form any part of any offer or contract, and their accuracy cannot be guaranteed