

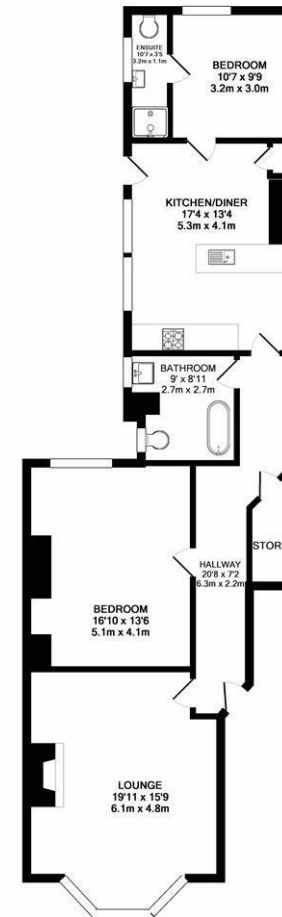


Two Bedroom Conversion Apartment Offering 1,111 Sq ft with 17ft Kitchen/Diner and No Onward Chain! Located in the heart of Brandling Village Conservation area, a spacious two bedroom apartment occupying the ground floor of this sensitive Victorian conversion on Haldane Terrace, Jesmond. Close to Jesmond Metro Station, countless great shops and restaurants as well as Newcastle City Centre itself.



The accommodation briefly comprises: communal entrance hall; private entrance through to hallway with storage cupboard; lounge with stripped wood flooring and log burner; 17ft kitchen diner with fitted units and work surfaces, dual windows, additional alcove storage, stripped wood flooring, dual windows and side door access to the rear yard; bedroom one measuring close to 17ft with stripped wood flooring and window overlooking the rear yard; bedroom two with an en-suite shower room; centralised bathroom complete with three piece suite including free standing roll top bath. Externally, a privately owned front garden and rear yard with wall boundary. Offered to the market with no onward chain, early viewings are advised.

Ground Floor Conversion Apartment | 1,111 Sq ft (103.2m<sup>2</sup>) | Two Bedrooms | Lounge | 17ft Kitchen Diner | Bathroom & En-Suite Shower Room | Front Garden & Rear Yard | Great Location | No Onward Chain | Leasehold 980 Years Remaining with Share of Freehold | Council Tax Band: C | EPC: D



TOTAL APPROX. FLOOR AREA 1111 SQ.FT. (103.2 SQ.M.)  
 Whilst every attempt has been made to ensure the accuracy of the floor plan contained here, measurements of doors, windows, rooms and any other items are approximate and no responsibility is taken for any error, omission, or mis-statement. This plan is for illustrative purposes only and should be used as such by any prospective purchaser. The services, systems and appliances shown have not been tested and no guarantee as to their operability or efficiency can be given.  
 Made with Metropix ©2019

**Offers Over £300,000**

**IMPORTANT NOTE:** These particulars and the descriptions and measurements herein do not constitute representation and whilst every effort has been made to ensure accuracy, this cannot be guaranteed.

