



Price

£360,000

Freehold

2x  1x  1x 

**Keats Avenue, Redhill,
Surrey, RH1**

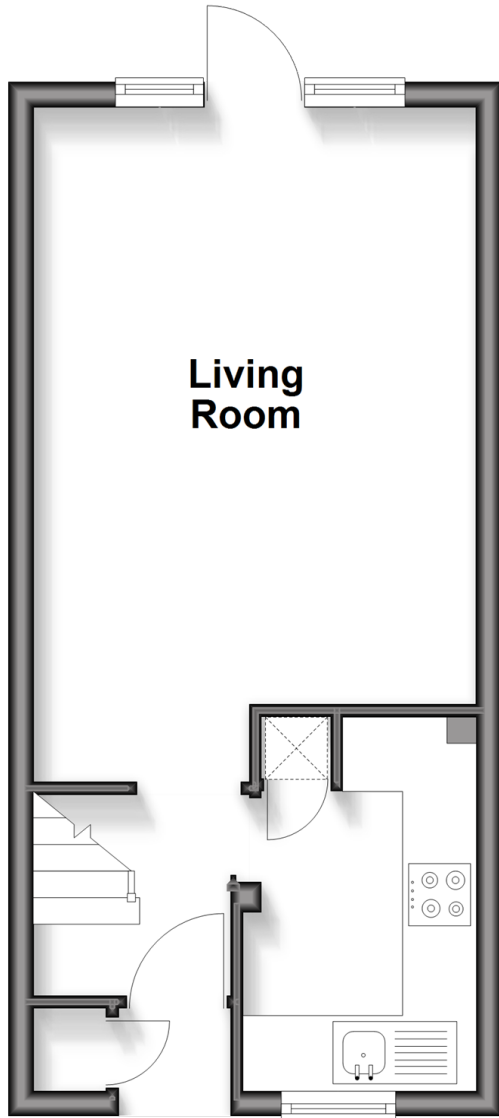
OVER 60?

Secure this property
for up to **59% less!**

cubitt & west
Helping you move forwards

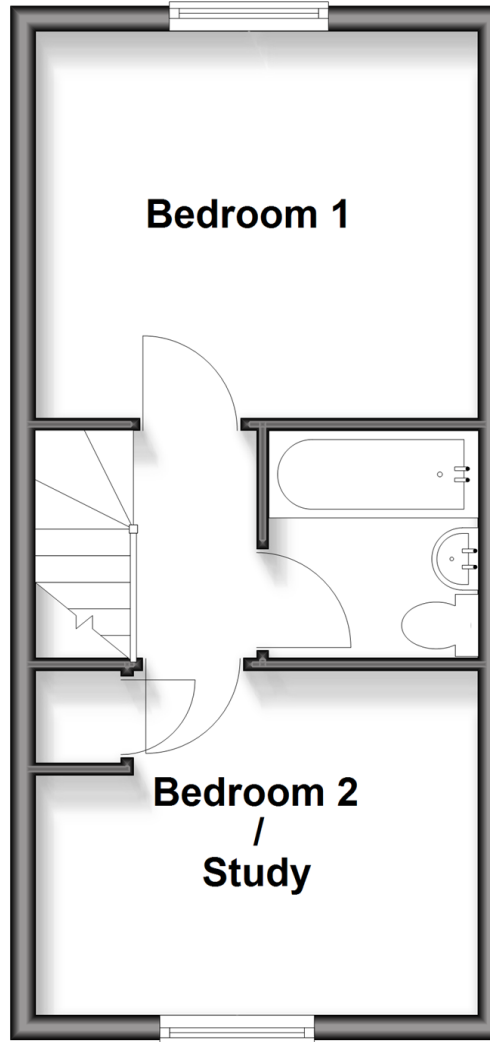
Ground Floor

Approx. 27.4 sq. metres (295.5 sq. feet)



First Floor

Approx. 28.3 sq. metres (304.2 sq. feet)



Accommodation

GROUND FLOOR

Entrance Hall

Kitchen: 9'10 x 5'11 (3.00m x 1.80m)

Living Room: 18'0 x 11'9 (5.49m x 3.58m)

FIRST FLOOR

Landing

Bedroom 1: 11'8 x 10'2 (3.56m x 3.10m)

Bedroom 2/Study: 11'11 x 9'2 (3.63m x 2.80m)

Bathroom

OUTSIDE

Off-Road Parking

Rear Garden



Main features

- Recently refurbished kitchen with integrated appliances
- Generous sized bedrooms with ample storage space
- Modern three-piece suite bathroom
- Direct access from living area to rear garden
- Allocated parking for two vehicles
- Sought after location and a short distance from Redhill Train Station and Town Centre



Nearest Schools

Primary Schools: St Matthew's CofE Primary 0.3 miles, St Joseph's Catholic Primary, Redhill 0.7 miles, Lime Tree Primary 0.8 miles
 Secondary Schools: The Warwick School 0.1 miles, St Bede's School 0.7 miles, St Nicholas School 1.2 miles

Transport Information

Train Stations: Redhill 0.3 miles, Earlswood 1.2 miles, Merstham 1.4 miles

Address

Keats Avenue, Redhill, Surrey, RH1

Directions

For directions to this property please contact us.





cubitt&west
Helping you move forwards

Call Redhill Branch 01737 778866 ■ cubittandwest.co.uk



■ Legal advice should be taken to verify fixtures/fittings, planning, alterations and/or lease details ■ Appliances & services are untested, dimensions are approximate and floor plans are not to scale
■ Through a Homewise Home For Life Plan people aged 60+ can secure this property for up to 59% less, by purchasing a Lifetime Lease

EPC RATING

CURRENT:	POTENTIAL:
E(52)	C(78)

23401494/20260214/AB/JB2