

Bronze Close, Beggarwood – RG22 4UF

£365,000

4 BEDROOMS • ENSUITE TO PRINCIPLE BEDROOM • GARAGE WITH DRIVEWAY • DOWNSTAIRS WC •
CLOSE TO PLAY PARKS AND GREEN SPACE • WELL APPOINTED KITCHEN / BREAKFAST

01256 321777

www.thepropertyexplorer.co.uk

the property
explorer

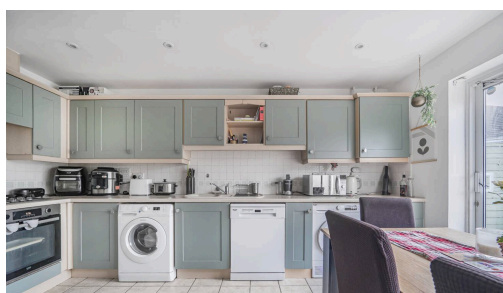
This well presented four bedroom townhouse offers versatile accommodation arranged over three thoughtfully planned floors. The ground floor features a traditional layout with a kitchen breakfast room enjoying direct access to the low-maintenance rear garden. A flexible fourth bedroom, ideal as a home office or guest room, together with a downstairs WC completes this level. The first floor provides a bright and airy living room, a generous double bedroom and a family bathroom. The top floor is home to the principal bedroom with built-in wardrobes and an en suite, alongside a further well-proportioned double bedroom. Externally, the property benefits from a private, well-screened frontage and an enclosed rear garden, with a garage and driveway conveniently located within a nearby block.

Council Tax band: D

EPC Energy Efficiency Rating: C



- 4 BEDROOMS
- ENSUITE TO PRINCIPLE BEDROOM
- GARAGE WITH DRIVEWAY
- DOWNSTAIRS WC
- CLOSE TO PLAY PARKS AND GREEN SPACE
- WELL APPOINTED KITCHEN / BREAKFAST

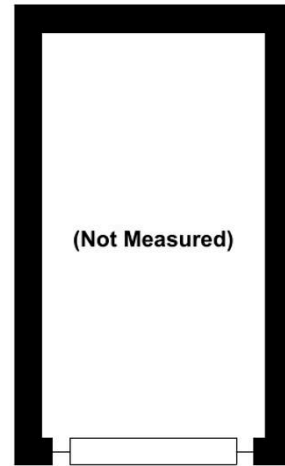




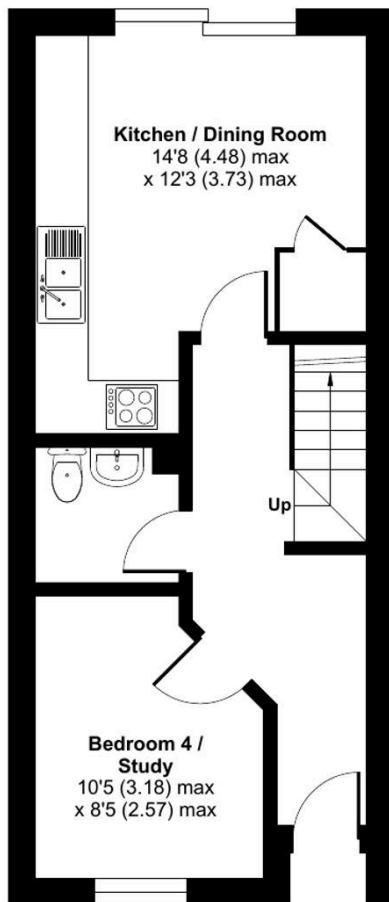
Bronze Close, Beggarwood, Basingstoke, RG22

Approximate Area = 1136 sq ft / 105.5 sq m (exclude garage)

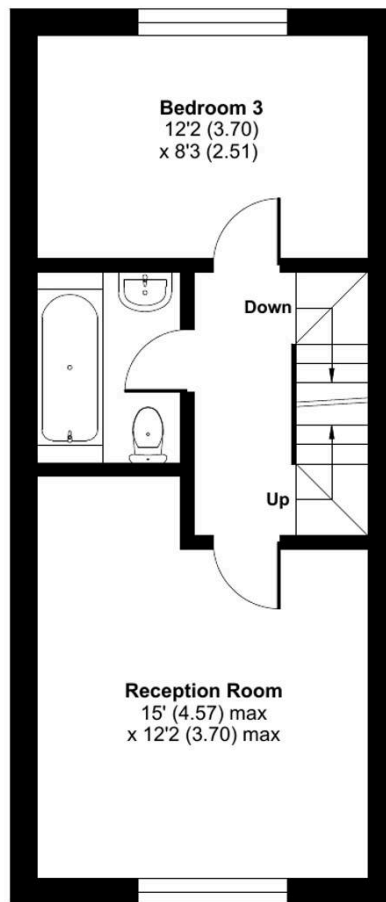
For identification only - Not to scale



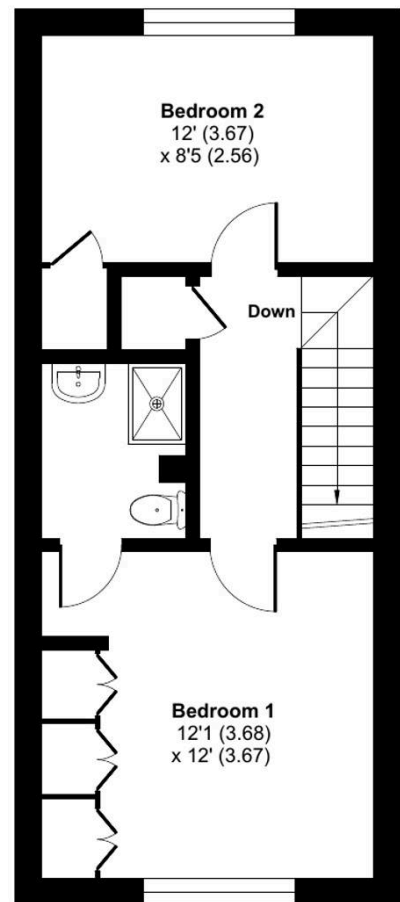
GARAGE



GROUND FLOOR



FIRST FLOOR



SECOND FLOOR



Floor plan produced in accordance with RICS Property Measurement 2nd Edition, Incorporating International Property Measurement Standards (IPMS2 Residential). © nchecom 2026. Produced for Property Explorer. REF: 1394030