



Exmouth Road, Ruislip, HA4 0UF
Guide Price £600,000 | Freehold



LAWRENCE RAND



Key Description:

- Extended Four bedroom end of terrace house
- Large family kitchen
- Well kept South facing garden
- Guest bedroom located on the ground floor could also be used as an additional reception room
- Driveway for two cars
- Added benefit of a utility room
- Generously sized L shaped lounge/dining room

This extended four-bedroom end of terrace house offers a blend of comfort and functionality in a sought-after location. The property boasts a large family kitchen perfect for meal preparations and gatherings. The south-facing garden is well maintained, providing a tranquil outdoor retreat. Conveniently located near the South Ruislip Central line station and amenities, this property ensures easy access to transportation and daily necessities. The ground floor features a guest bedroom that can also serve as an additional reception room, catering to versatile living arrangements. The driveway accommodating two cars adds practicality to the home, along with the added convenience of a utility room. The generously sized L-shaped lounge/dining room offers a spacious setting for relaxation and entertainment. To the first are three comfortable bedrooms and a family bathroom to cater to every-day needs. Situated on a popular road close to sought-after schools, this property presents a comfortable living space for families seeking convenience and charm.



Presented with care by Lawrence Rand – helping you find the place you'll love to call home.



Location:

Exmouth Road is located in the heart of South Ruislip and is perfectly positioned just a short walk from the area's shopping including the Old Dairy complex and transport facilities (BR/Central/Metropolitan/Piccadilly lines accessible locally). Alternatively for the motorist the A40/Western Avenue is just a short drive away providing swift and direct access into Central London and the surrounding Home Counties. For families the property is ideally located within the catchment areas of the local highly regarded schools such as St Swithun Wells, Deanesfield & Queensmead.

Verified Material Information:

Local authority: Hillingdon

Council tax band: E

EPC Rating: D

Suppliers:

Electricity supply: Mains, Water supply: Mains
water, Sewerage: Mains

Heating: Gas central heating

Broadband & mobile coverage:

Broadband: FTTP (Fibre to the Premises)

Mobile coverage: O2 - Excellent, Vodafone - Excellent, Three - Excellent, EE - Excellent

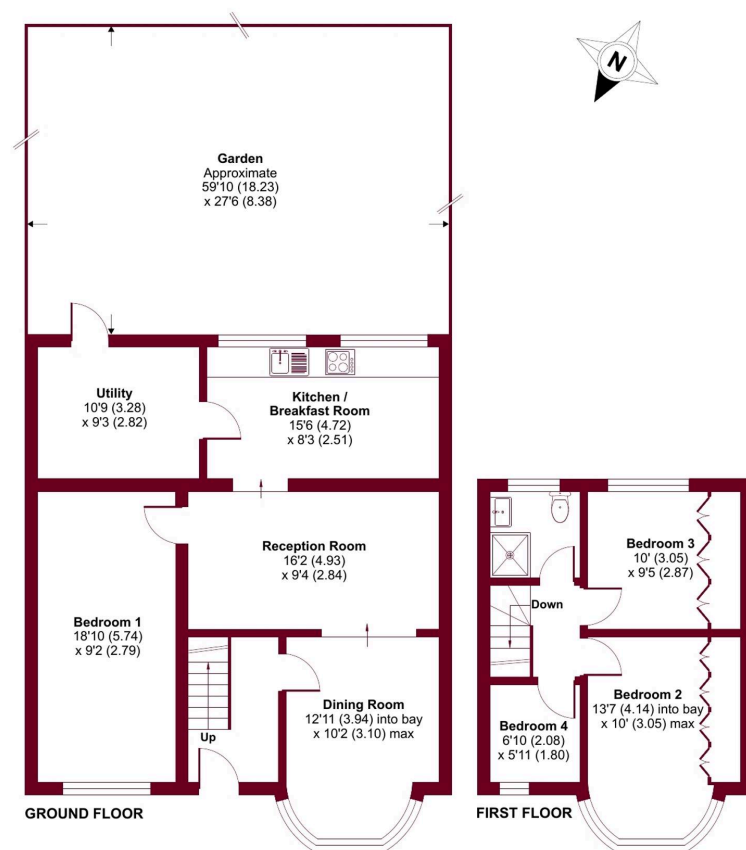




Exmouth Road, RUISLIP, HA4

Approximate Area = 1147 sq ft / 106.6 sq m

For identification only - Not to scale



Floor plan produced in accordance with RICS Property Measurement Standards incorporating International Property Measurement Standards (IPMS2 Residential). © nichcom 2023. Produced for Lawrence Rand. REF: 1012602

Lawrence Rand

51 Victoria Road, Ruislip - HA4 9BH

01895 632211

Sales@lawrence-rand.co.uk

www.lawrence-rand.co.uk

Lawrence Rand Limited has made every reasonable effort to ensure the accuracy of the information provided. However, we accept no responsibility for errors, omissions, or misstatements. All measurements, distances, and descriptions are approximate and for guidance only. Prospective purchasers or tenants must verify all details independently. Some images may include AI-generated virtual staging to illustrate the potential of the property and are for visual guidance only. No warranty is given or implied, and these particulars do not form part of any offer or contract. Lawrence Rand reserves the right to amend or withdraw any property without notice.