



Pulteney Close, London, E3

BUTLER & STAG



Excellent two bedroom split-level apartment perfectly positioned between the wonderful green spaces of Victoria Park and the amenities of Roman Road.



- Two Bedroom Split-Level Apartment
- Moments from Victoria Park and Roman Road
- Two Large Double Bedrooms
- Very Well Presented Throughout
- Balcony
- Suits a Couple or Two Professional Sharers
- Furnished
- Available from 24th January 2026

Well presented and spacious throughout, the property benefits from two large double bedrooms and would ideally suit two professional sharers or a couple requiring work-from-home space.

Featuring a bright living room with dining space and a stylish kitchen and bathroom, a private balcony provides some much-coveted outside space.

Bow Road, Mile End and Hackney Wick stations are also all within easy reach.

Offered furnished and available from 24th January 2026.

EPC Rating D
Council Tax Band C

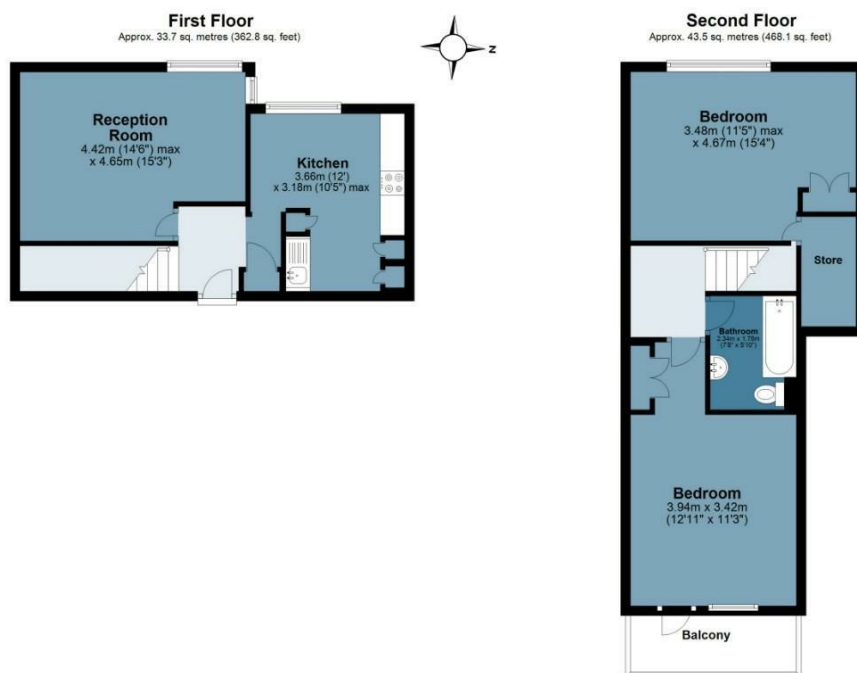




Pulteney Close

Approx. Gross Internal Area 77.2 Sq M (831 Sq Ft)

BUTLER & STAG



Measurements are approximate and for illustration purposes only. While we do not doubt the accuracy and completeness, we advise you conduct a careful independent assessment of the property to determine monetary value.
© @modephoto.uk www.modephoto.co.uk

IMPORTANT NOTICE - These particulars have been prepared in good faith and they are not intended to constitute part of an offer or contract. We have not performed a structural survey on this property and the services, appliances and specific fittings have not been tested. All photographs, measurements, floor plans and distances referred to are given as a guide and should not be relied upon.

BUTLER & STAG

☎ 020 8102 1236

🏠 508 Roman Road, Bow, London, E3 5LU

✉ bow@butlerandstag.com

www.butlerandstag.uk