



10 Marsh Wall, London, E14 9GU
£3,000 Per month



10 Marsh Wall, London, E14 9GU

£3,000 Per month

LONG LET | ONE BEDROOM APARTMENT IN LANDMARK PINACCLE

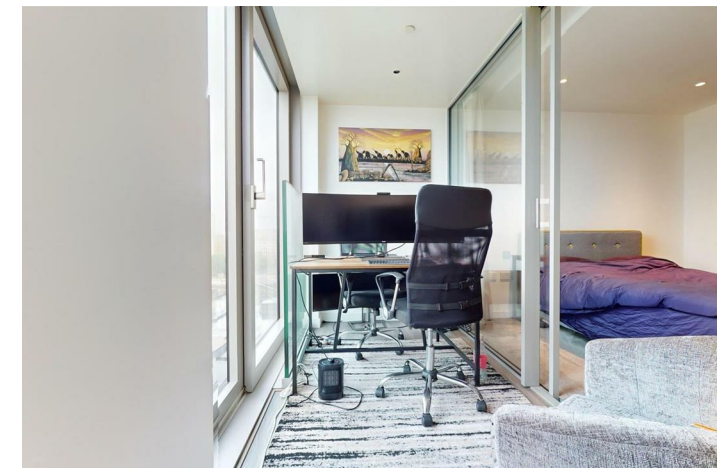
Welcome to this charming apartment located at 10 Marsh Wall in the heart of Canary Wharf! This property boasts a cosy reception room, perfect for relaxing or entertaining guests. With one spacious bedroom, you'll have plenty of room to unwind after a long day in the bustling city. The apartment features a modern bathroom, adding a touch of luxury to your daily routine.

Situated in a prime location, this apartment offers convenience and accessibility to all that London has to offer. Whether you're looking to explore the vibrant city life or enjoy a peaceful evening by the river Thames, this property provides the perfect base for your adventures.

Landmark Pinnacle is London's tallest residential development standing at 75 stores and the tallest in Western Europe. The building is located on the edge of Canary Wharf by river Thames, benefiting from incredibly impressive views that extend across London's skyline.

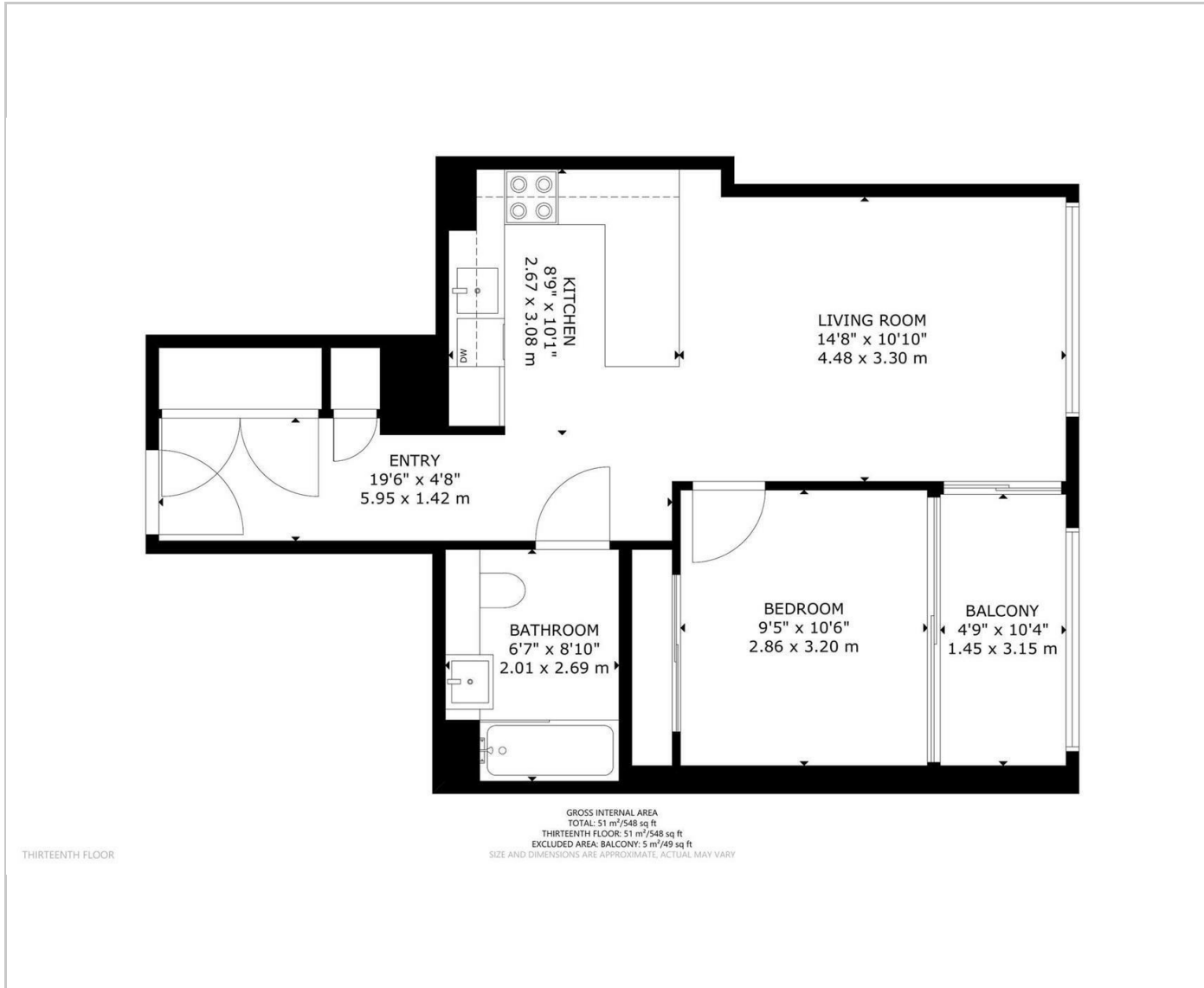
Key Features

- Stunning One Bedroom Apartment
- Stylish and Modern specs
- 24/7 Concierge
- Highest Private Gym In Europe
- Skyline
- Walking Distance to Canary Wharf station
- West Facing
- Private Cinema
- Roof Terrace on 75thFloor

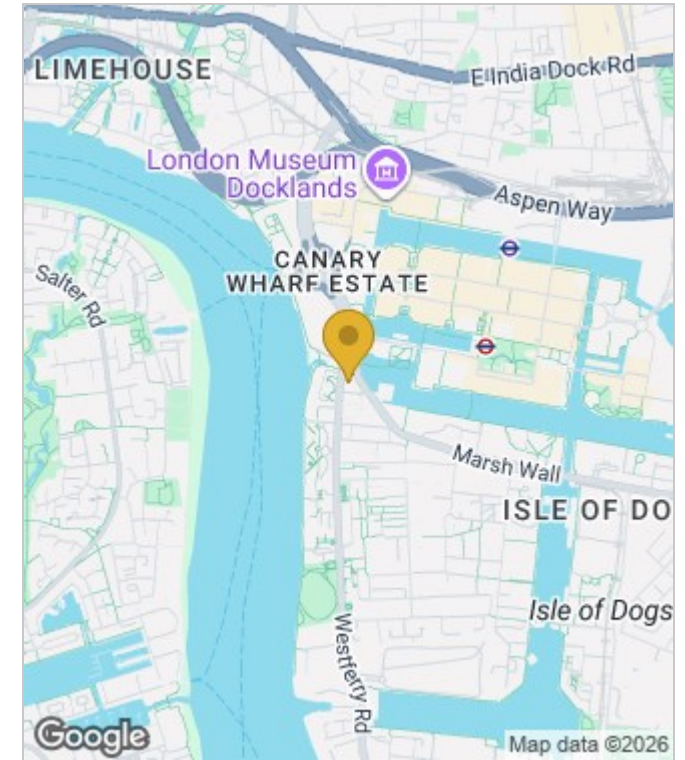


Council Tax Band: E

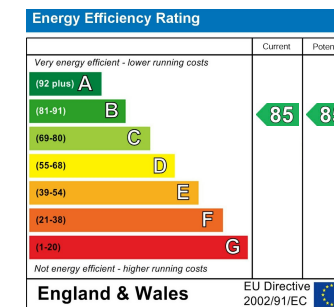
Floor Plans



Area Map



Energy Performance Graph



These particulars, whilst believed to be accurate are set out as a general outline only for guidance and do not constitute any part of an offer or contract. Intending purchasers should not rely on them as statements of representation of fact, but must satisfy themselves by inspection or otherwise as to their accuracy. No person in this firm's employment has the authority to make or give any representation or warranty in respect of the property.