



## 39 Parry Court Hazel Grove, Mapperley - NG3 6DR

Guide Price £220,000 - £230,000



## 39 Parry Court Hazel Grove

Mapperley, Nottingham

GUIDE PRICE £220,000-£230,000 NO CHAIN!

Sought-after retirement apartment for the over 60's with Mapperley's excellent amenities on the doorstep and on-site facilities. Viewing highly recommended!

Council Tax band: B

Tenure: Leasehold

- Second floor retirement apartment for the over 60's
- Offered to the market with no upward chain
- Mapperley's excellent choice of shops, cafés, buses and everyday amenities just a short walk away
- Private parking, 24-hour emergency call system and on-site laundry facilities
- Perfect balance of independence and support within a dedicated retirement setting
- Set within a well-maintained development with attractive communal gardens to enjoy year-round
- Open-plan living/kitchen with lovely views over the communal grounds
- Fitted kitchen with integrated cooking appliances
- Spacious double bedroom with built-in wardrobes
- Modern shower room fitted with a contemporary white suite









**Approximate total area<sup>(1)</sup>**  
44.5 m<sup>2</sup>  
479 ft<sup>2</sup>

**Reduced headroom**  
0.9 m<sup>2</sup>  
10 ft<sup>2</sup>

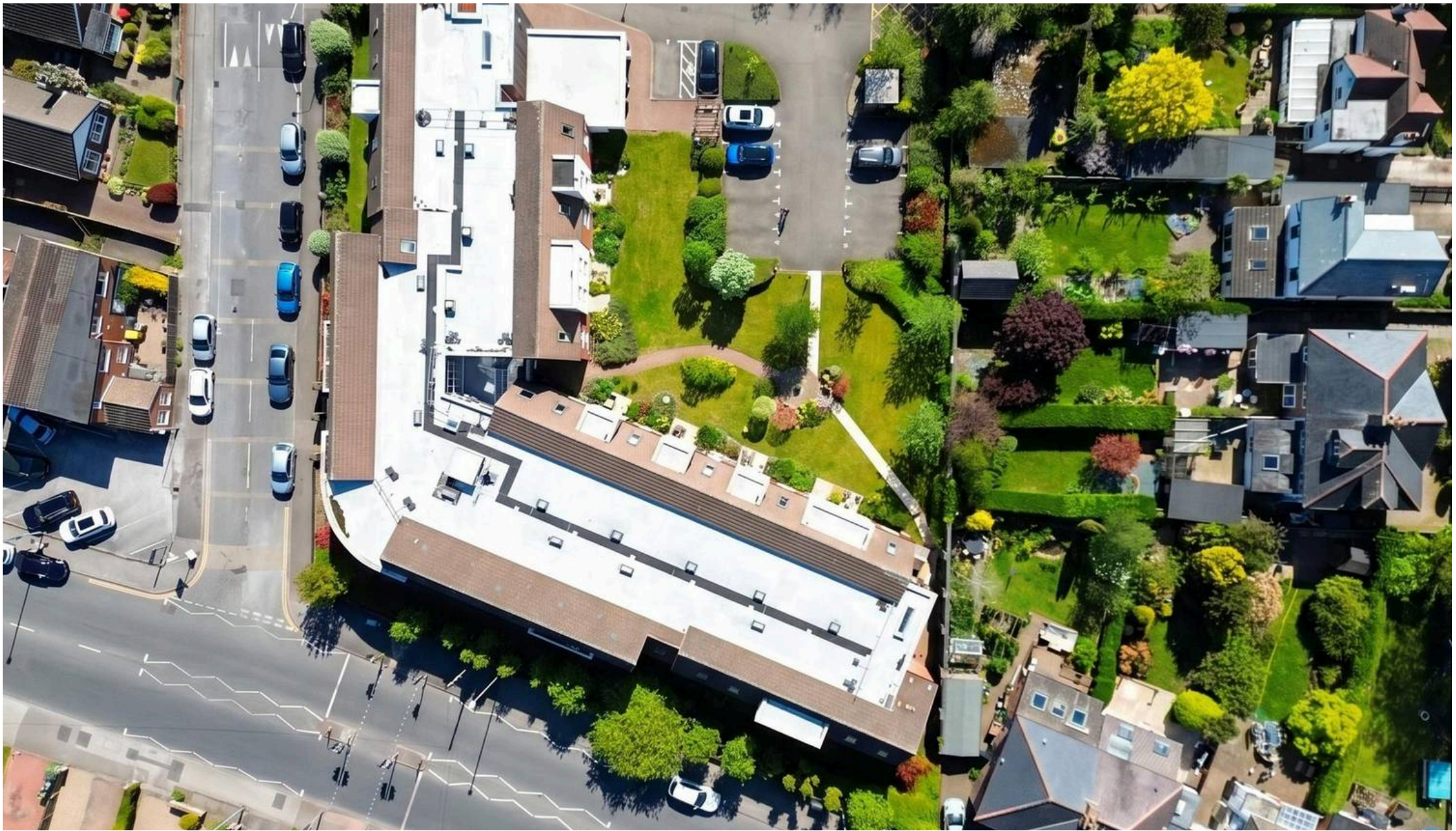
(1) Excluding balconies and terraces

Reduced headroom  
..... Below 1.5 m/5 ft

Calculations reference the RICS IPMS 3C standard. Measurements are approximate and not to scale. This floor plan is intended for illustration only.

GIRAFFE 360





## David James Estate Agents

David James Estate Agents, 45B Plains Road – NG3 5JU

0115 962 4213 • [mapperley@david-james.com](mailto:mapperley@david-james.com) • [www.david-james.com](http://www.david-james.com)

These particulars are produced in good faith and are set out as a general guide only. Measurements are approximate and floor plans are for illustrative purposes only. Services have not been tested. We have established professional relationships with third-party suppliers for the provision of services to Clients, details of which can be found on the property listing page on our website.