



Stable Mews, TW1

£2,200 Per calendar month

This stunning two double bedroom modern house includes a large living area with vaulted ceilings, a Mobalpa kitchen with integrated AEG appliances and a modern three piece bathroom.

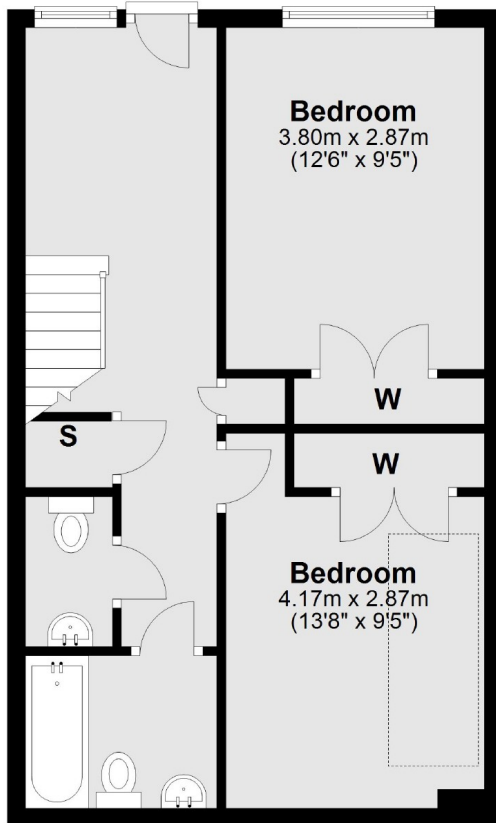
Stable Mews is accessed off Grove Avenue which is one of Twickenham's premier roads. There is a vast array of shops, bars and restaurants at arms reach and the mainline station with its fast links to Waterloo is also within a few hundred yards. There are also excellent schools nearby.

Features

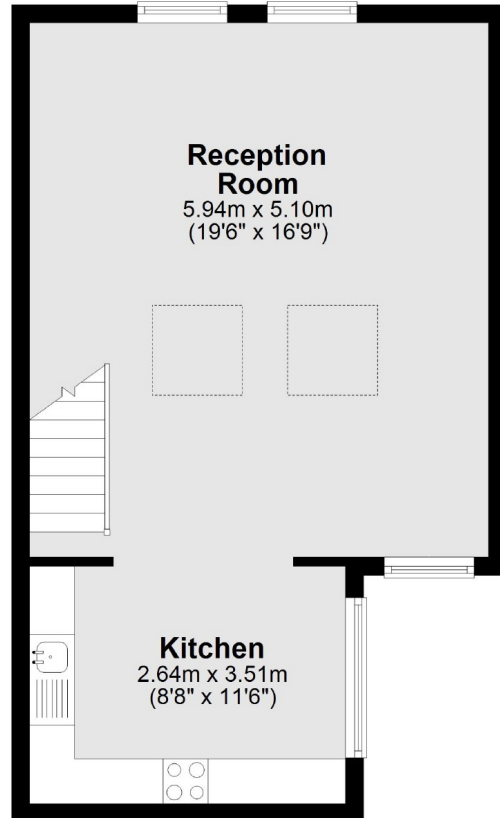
- Under Floor Heating
- Two Double Bedrooms
- Solar Panels
- Eco Friendly
- Brand New Houses
- Parking Outside

Stable Mews, Twickenham, TW1

Ground Floor



First Floor



Total area: approx. 84.3 sq. metres (907.5 sq. feet)