



Hilltop Drive, Marple, SK6 6JZ

FULLY REFURBISHED THROUGHOUT and enjoying an attractive location close to open countryside, Marple railway station and the highly regarded Marple Hall secondary school, this detached true bungalow is sure to prove popular. The spacious and bright accommodation includes an entrance hall, lounge with access to the garden, a stunning dining kitchen with full width by-fold windows opening to the rear garden, two good sized double bedrooms (one with the potential to add an en-suite shower room) and a luxury family bathroom. Outside a long driveway leads to a detached garage and there is a wide, private rear garden. Tenure: Freehold. Council Tax Band: D. EPC rating: to follow.

Price Guide: Offers Over £450,000



ENTRANCE HALL

STORE/POTENTIAL EN-SUITE

11' 9" x 11' 4" (3.58m x 3.45m)

LIVING ROOM

16' 10" x 13' 0" (5.13m x 3.96m)



DINING KITCHEN

14' 3" x 13' 0" max (4.34m x 3.96m)



BEDROOM ONE

12' 10" plus bay x 12' 0" (3.91m x 3.65m)



BEDROOM TWO

12' 10" plus bay x 12' 0" (3.91m x 3.65m)



LUXURY BATHROOM

8' 4" x 6' 8" (2.54m x 2.03m)



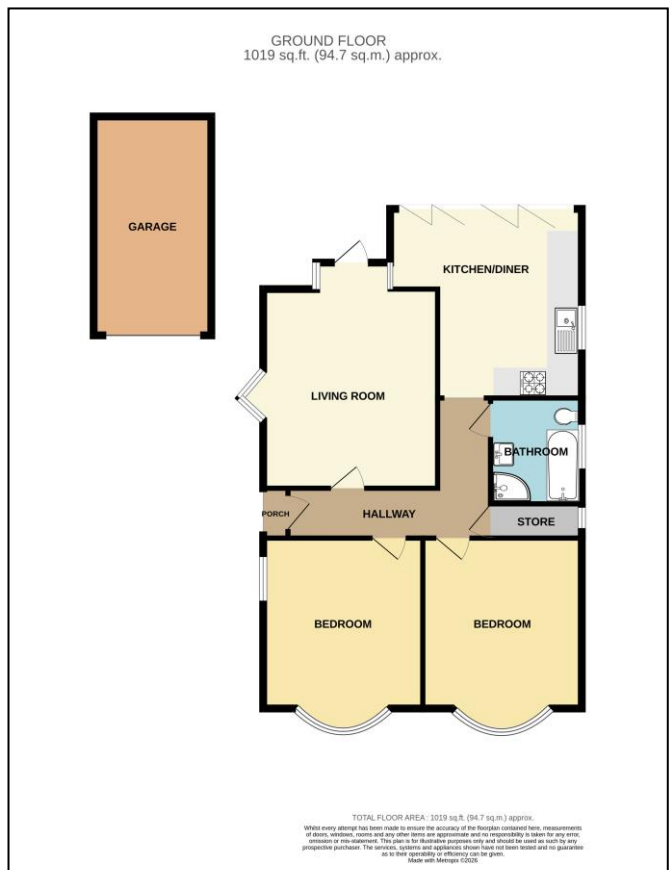
OUTSIDE

DETACHED GARAGE



VIEWING ARRANGEMENTS

Viewing is strictly by appointment with Thomas Lardner Romiley Office - telephone number 0161 494 5136.



Thomas Lardner Estate Agents, which is a trading name of Romiley Residential Ltd, for themselves and for the vendors or lessors of this property whose agents they are give notice that: (1) all measurements are approximate and any plans provided are not to scale; (2) the particulars are set out as a general outline only for the guidance of intending purchasers or lessors, and do not constitute, nor constitute part of, an offer or contract; (3) we have not tested any apparatus, equipment, fixtures, fittings or services, and so cannot verify that they are in working order or fit for purpose; (4) solicitors should confirm moveable items described in these particulars are, in fact, included in the sale since circumstances change during marketing or negotiations.

T709 Printed by Ravensworth 01670 713330