



## Portland Place, W1B

£3,800 Per calendar month

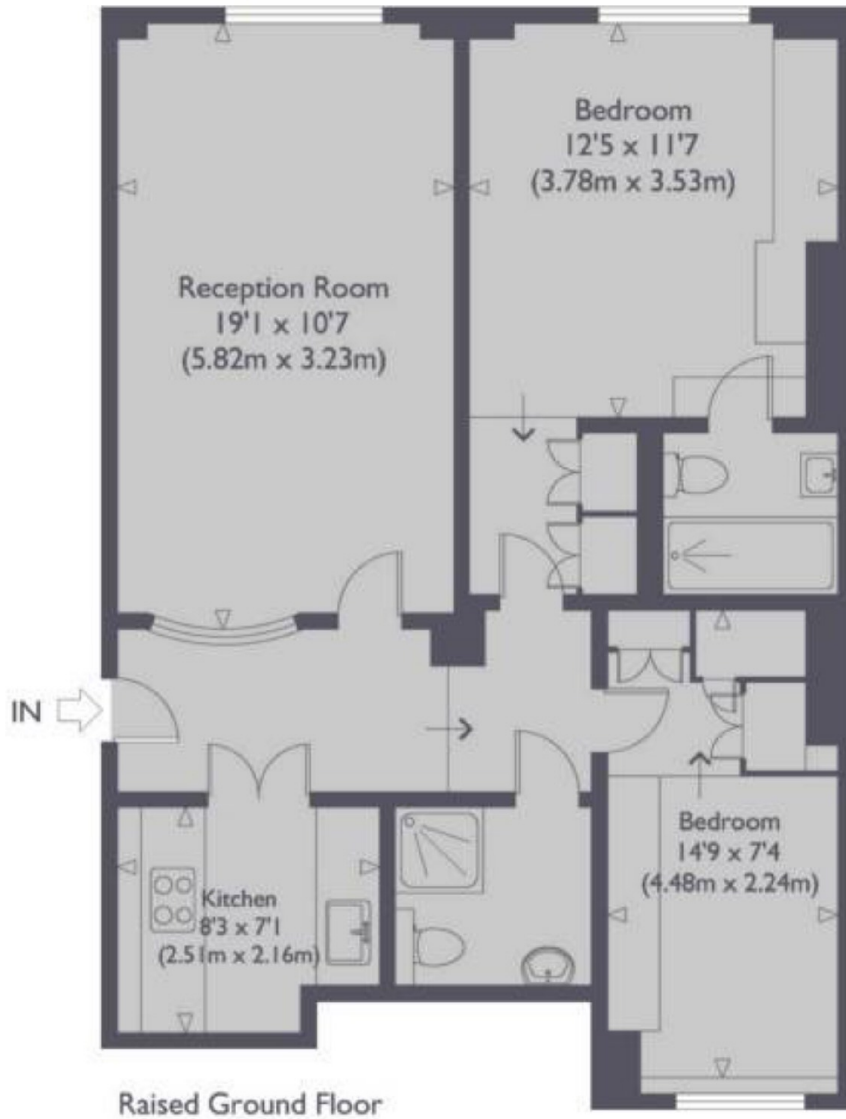
A well-presented apartment on the ground floor of an attractive portered block on Portland Place, moments from Regent's Park. The property has a large reception, kitchen, en suite master bedroom, second bedroom and further shower room.

Winsley Court is an exclusive stone fronted building benefitting from a grand entrance hall, portage and lift. Situated between Marylebone and Fitzrovia, both Regent's Park and Great Portland Street stations are nearby.

### Features

- Raised Ground Floor
- Two Bedrooms
- Modern
- Lift And Porter
- Ample Storage
- Wood Flooring

# Portland Place, London, W1B



Approximate Gross Internal Floor Area : 720 sq ft / 66.9 sq m