

Howard Morley  
& Sons

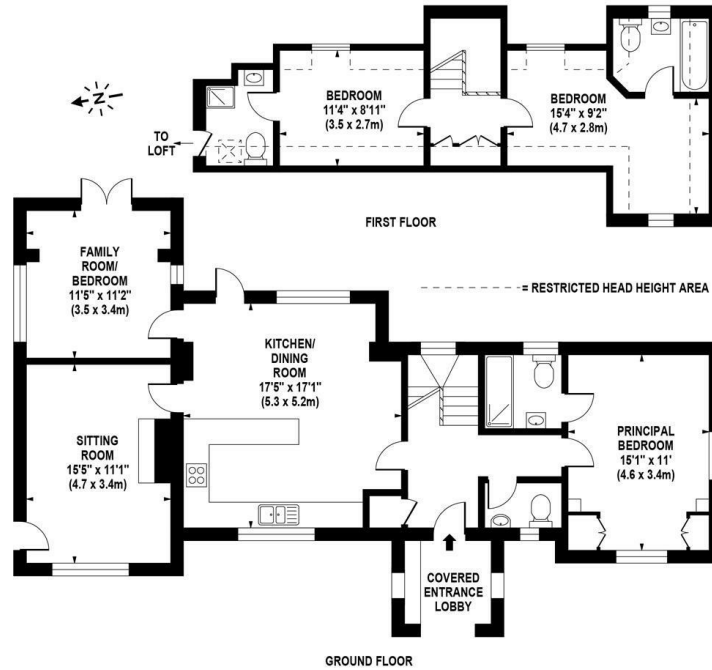


PCM

**£2,950 PCM**

**Cranleigh Road**

Wonersh, GU5 0QY



APPROX. GROSS INTERNAL FLOOR AREA 1362 SQ FT / 127 SQ M (INCLUDING RESTRICTED HEAD HEIGHT AREA)

Whilst every attempt has been made to ensure the accuracy of the floorplan contained here, measurements of doors, windows and rooms are approximate and no responsibility is taken for any error omission or mis-statements. These plans are for representation purposes only and should be used as such by any prospective purchaser / tenant. The services, systems and appliances listed in this specification have not been tested and no guarantee as to their operating ability or their efficiency can be given

© www.skyshotglobal.com

3	
3	
3	

Energy Efficiency Rating		Current	Potential
Very energy efficient - lower running costs			
(92 plus)	A		
(81-91)	B		
(69-80)	C		78
(55-68)	D	65	
(39-54)	E		
(21-38)	F		
(1-20)	G		
Not energy efficient - higher running costs			
England & Wales		EU Directive 2002/91/EC	

Agents Note: Whilst every care has been taken to prepare these particulars, they are for guidance purposes only. All measurements are approximate and are for general guidance purposes only and whilst every care has been taken to ensure their accuracy, they should not be relied upon and potential buyers/tenants are advised to recheck the measurements

Howard Morley & Sons

OFFICE ADDRESS  
276 High Street  
Guildford  
Surrey  
GU1 3JL

OFFICE DETAILS  
01483 575 304  
lettings@hmorley.co.uk  
hmorley.co.uk