

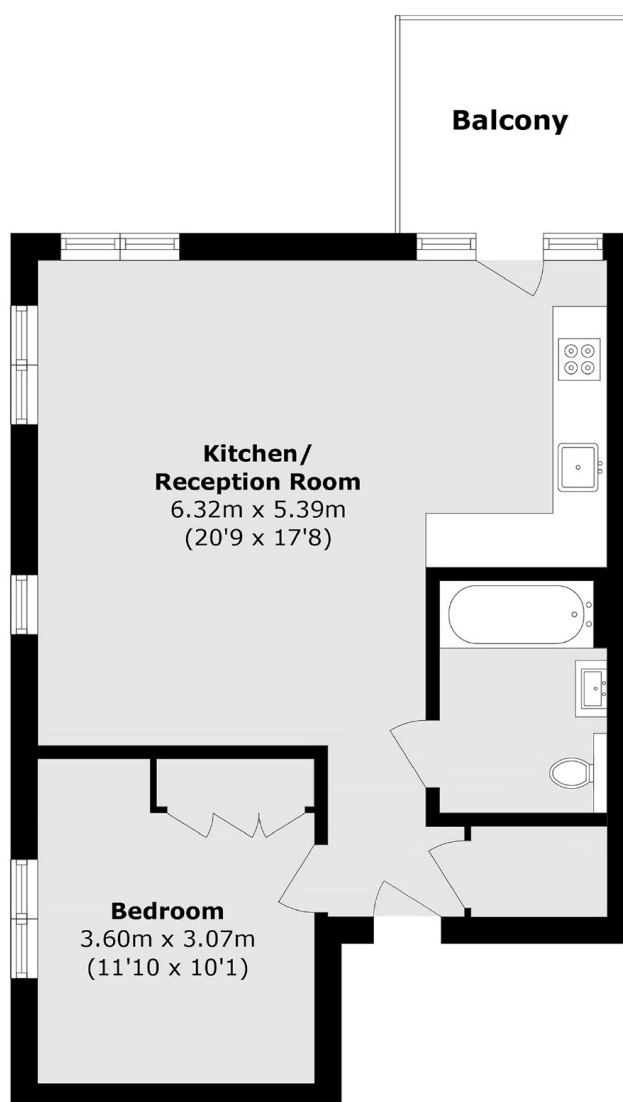


ORCHARD PLACE, E14

£500,000

A spacious one bedroom apartment in the popular Agar House building. This modern property offers a large, bright reception/kitchen with far-reaching, dual-aspect views and access to a private balcony, a double bedroom, with plenty of built in storage, and a family bathroom.

- One Double Bedroom
- Residents Gym
- River Views
- 24 Hour Concierge
- Cinema
- Swimming Pool



Total area (approx.): 51.8 sq. m (557.6 sq. ft)

Balcony area (approx.): 17.0 sq. m (183.0 sq.ft)

LiFE RESIDENTIAL

36 Millharbour, London, E14

9JS

Sales: 020 3668 1033

Lettings: 020 3668 1030

Energy Rating: . We aim to make our particulars both accurate and reliable. However they are not guaranteed; nor do they form part of an offer or contract. If you require clarification on any points then please contact us, especially if you're traveling some distance to view. Please note that appliances and heating systems have not been tested and therefore no warranties can be given as to their good working order.