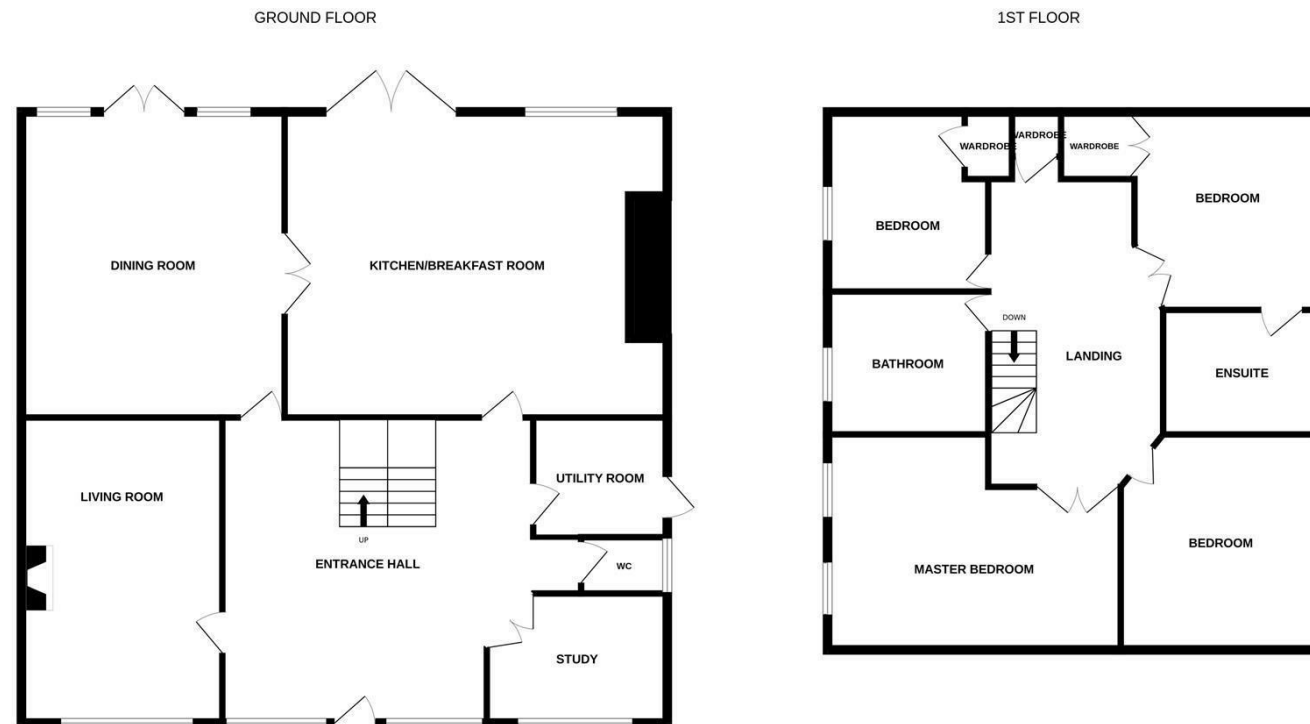


1 High Street, Keynsham, Bristol BS31 1DP
Tel: 0117 9868300 email: lettings@daviesandway.com

Energy Efficiency Rating		
	Current	Potential
Very energy efficient - lower running costs		
(92 plus) A		
(81-91) B		
(69-80) C		
(55-68) D		
(39-54) E		
(21-38) F		
(1-20) G		
Not energy efficient - higher running costs		
England & Wales	EU Directive 2002/91/EC	



Whilst every attempt has been made to ensure the accuracy of the floorplan contained here, measurements of doors, windows, rooms and any other items are approximate and no responsibility is taken for any error, omission or mis-statement. This plan is for illustrative purposes only and should be used as such by any prospective purchaser. The services, systems and appliances shown have not been tested and no guarantee as to their operability or efficiency can be given.
Made with Metropix ©2023

426 Bath Road, Saltford, Bristol, BS31 3DH



£3,500 Per Month

426 Bath Road, Saltford, Bristol, BS31 3DH

Nestled on the desirable Bath Road in Saltford, Bristol, this impressive four-bedroom detached house offers a perfect blend of comfort and elegance. With its spacious layout, this home is ideal for families seeking a tranquil yet convenient lifestyle.

As you approach the property, you will be greeted by a secure gated driveway, providing both privacy and peace of mind. The generous living spaces are designed to accommodate modern living, making it easy to entertain guests or enjoy quality time with family. The option to furnish the home or leave it unfurnished allows for personalisation, ensuring that it can be tailored to your unique style and needs.

Each of the four bedrooms is well-proportioned, providing ample space for relaxation and rest. The property is situated in a sought-after area, known for its community spirit and proximity to local amenities, schools, and transport links.

Agent Note: Please note, the photos provided are historic photos from 2023. Whilst the house remains the same, there may be some internal cosmetic differences including furniture.

