

13 Gonville Close - £1,215 Per Month

Mildenhall IP28 7PY

shires

Estate & Letting Agents



"Consistently providing outstanding service to our clients"

£1,215 Per Month

The Property

This delightful first-floor apartment has recently undergone a brand-new refurbishment throughout, including a newly fitted kitchen, modern bathroom, and new heating system, offering bright and well-presented accommodation in a pleasant setting surrounded by greenery.

The property comprises a well-proportioned bedroom, comfortable reception room, newly fitted kitchen, modern bathroom, and excellent storage throughout, including three cupboards and a separate storage room which could also be used as a small study area. The apartment provides a cosy yet highly functional living space, ideal for those seeking a comfortable home in a convenient location.

Externally, the property benefits from communal parking, a private garden space, and an outdoor storage shed, offering useful additional space and the opportunity to enjoy the outdoors.

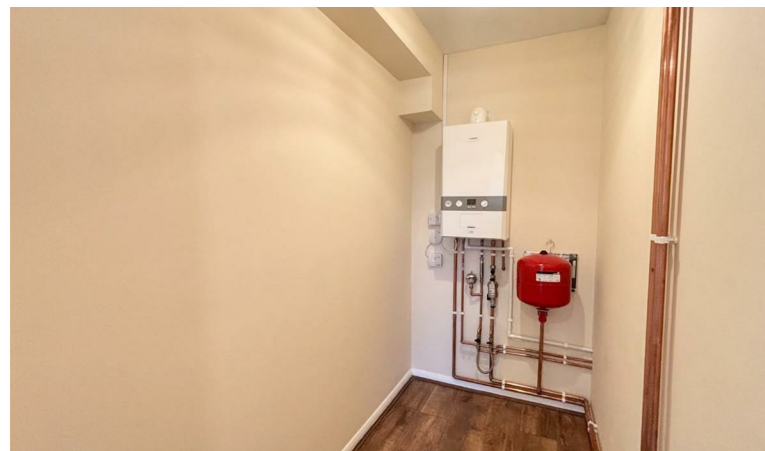
Situated in Mildenhall, the property is conveniently located close to RAF Mildenhall and RAF Lakenheath, as well as being within easy reach of Cambridge and Bury St Edmunds. Local amenities, parks, woodland walks and transport links are also nearby, making it a practical choice for everyday living.

Early viewing is highly recommended to appreciate the quality of the refurbishment, generous storage, private garden space, and all this charming apartment has to offer.

Features

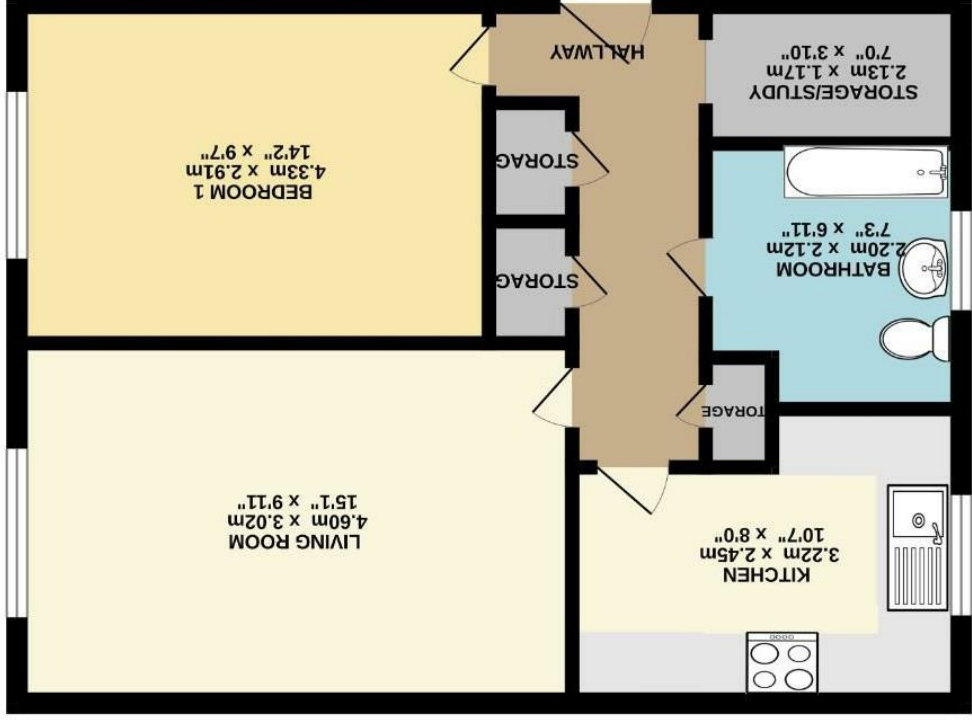
- BRAND NEW REFURBISHMENT
- ONE DOUBLE BEDROOM
- YOUR OWN GARDEN
- COMMUNAL PARKING
- STORAGE/STUDY ROOM
- FAMILY BATHROOM
- OUTSIDE STORAGE SHED
- BRAND NEW KITCHEN
- CLOSE TO RAF MILDENHALL & RAF LAKENHEATH
- CALL SHIRES TO VIEW





These sales particulars have been produced as a general guide only and we would draw to your attention that we have not carried out a detailed Survey of the property nor have we tested services, appliances or specific fittings. Whilst measurements and statements given within the details are provided in good faith, their accuracy should not be relied upon. If there are any points about which you may be uncertain or would like further clarification, we would suggest that you telephone this office and speak to our staff who will endeavour to assist you.

GROUND FLOOR
45.7 sq.m. (492 sq.ft.) approx.



What every attempt has been made to ensure the accuracy of the floorplan contained here, measurements of doors, windows, rooms and other items are approximately as shown and should be used as such. By any prospective purchaser. The services, systems and appliances shown have not been tested and no guarantee as to their operability or timing can be given.
Made with Metapix ©2025

TOTAL FLOOR AREA: 45.7 sq.m. (492 sq.ft.) approx.

