



# Pound Cottage

London Road, Blewbury, Oxfordshire. OX11 9NY



**Hodsons**  
...your move, our passion  
Sales | Lettings

# Pound Cottage,

London Road, Blewbury

This attractive period cottage in a highly sought-after central village position within picturesque and renowned Blewbury. Enjoying a peaceful outlook over open green space to the front and opening out and up to the spectacular network of rural public paths onto the Ridgeway behind, the property offers a charming and tranquil setting while remaining conveniently placed for the abundant and vibrant village clubs and activities, pubs, shop, garden centre and other amenities.

A welcoming living room centred around an open fireplace with a wood-burning stove, creating a warm and inviting focal point. The well-proportioned kitchen provides ample space for a dining table and chairs, with doors opening directly onto the south-facing rear garden, making it ideal for everyday living and entertaining. A charming ground-floor bathroom offers both power-shower speed, or bathing luxury. While upstairs a generous principal bedroom alongside a well-sized second double bedroom and work space complete the picture.

Externally, the cottage benefits from a mature garden brimming with established shrubs, trees, vegetable beds and pond. Popular for London commuting, Blewbury has excellent transport connections, well served via the A34, Reading Road and regular bus services to Didcot. The property is offered with no onward chain.





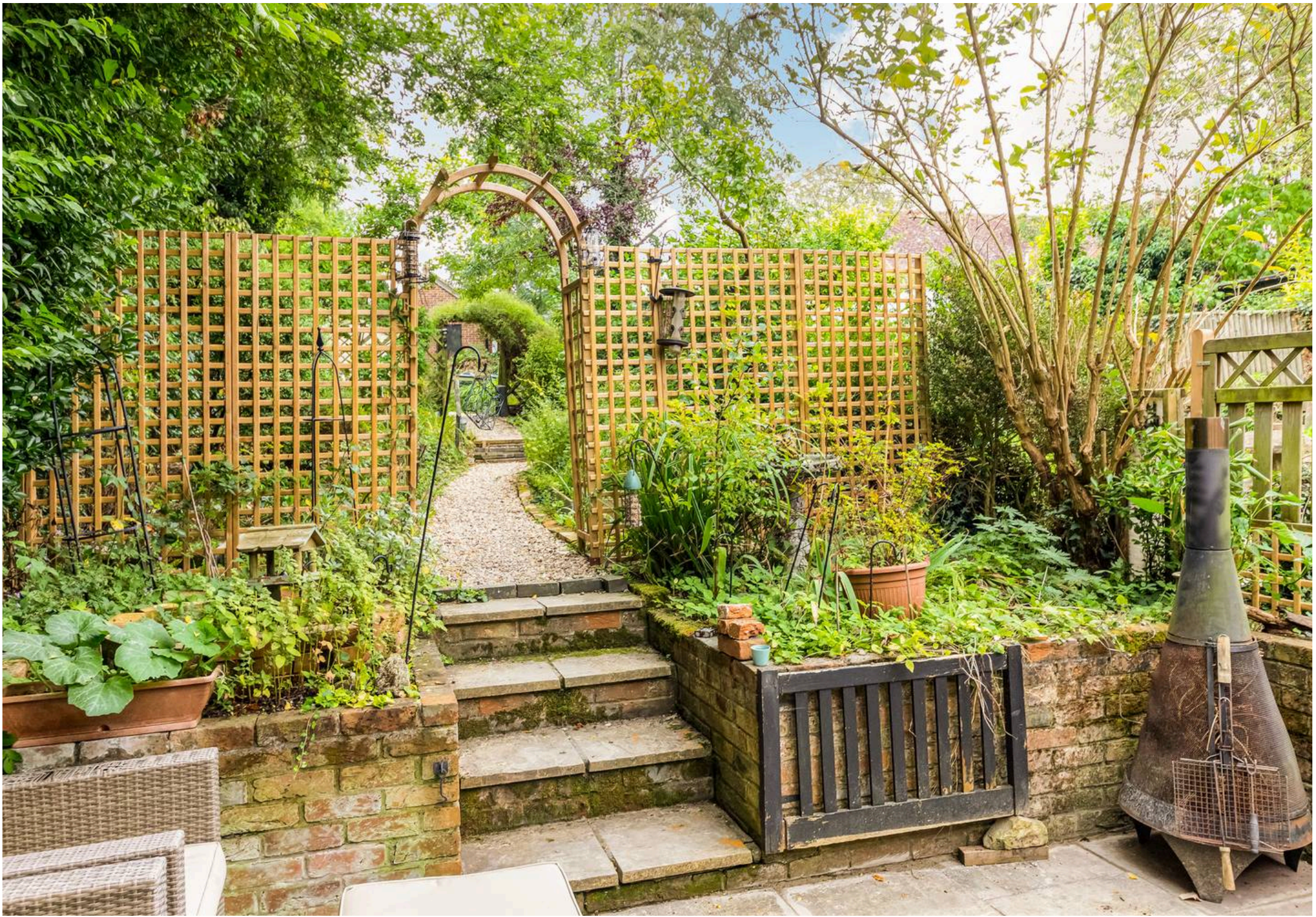
## Pound Cottage

### Blewbury

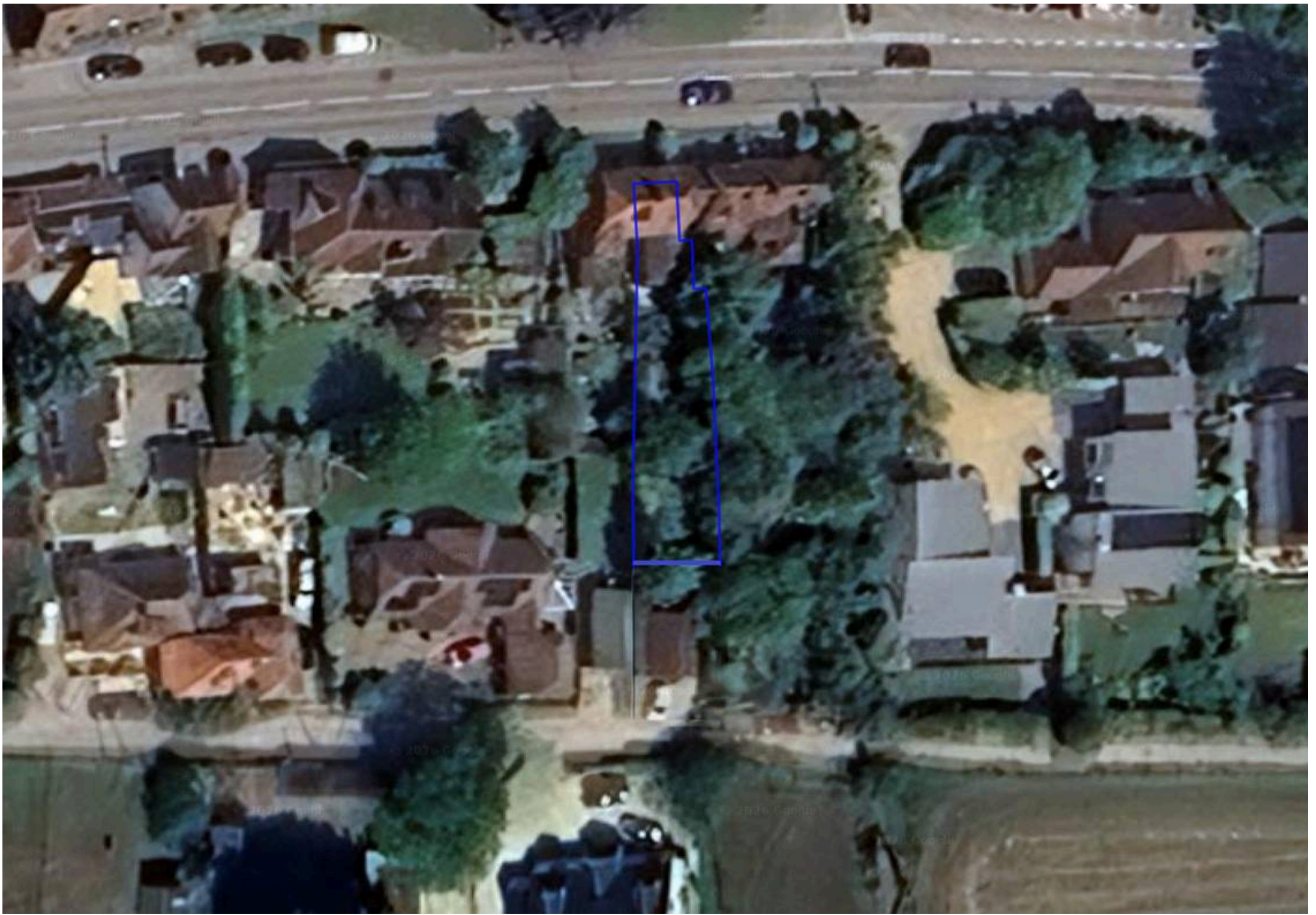
- Attractive period cottage in a highly sought-after Oxfordshire village, being sold with no chain
- Desirable central village location overlooking open green space
- Comfortable living room featuring an open fireplace with wood-burning stove
- Well-proportioned kitchen with space for a dining table and chairs, with doors opening onto the south-facing garden
- Generous principal bedroom and second well-sized double bedroom
- Mature south facing garden with established shrubs, trees, vegetable beds and pond
- Peaceful setting in the village of Blewbury, within easy walking distance of the local pub, village shop and scenic countryside walks
- Excellent transport links via the A34 and Reading Road, with a regular bus service through the village to Didcot










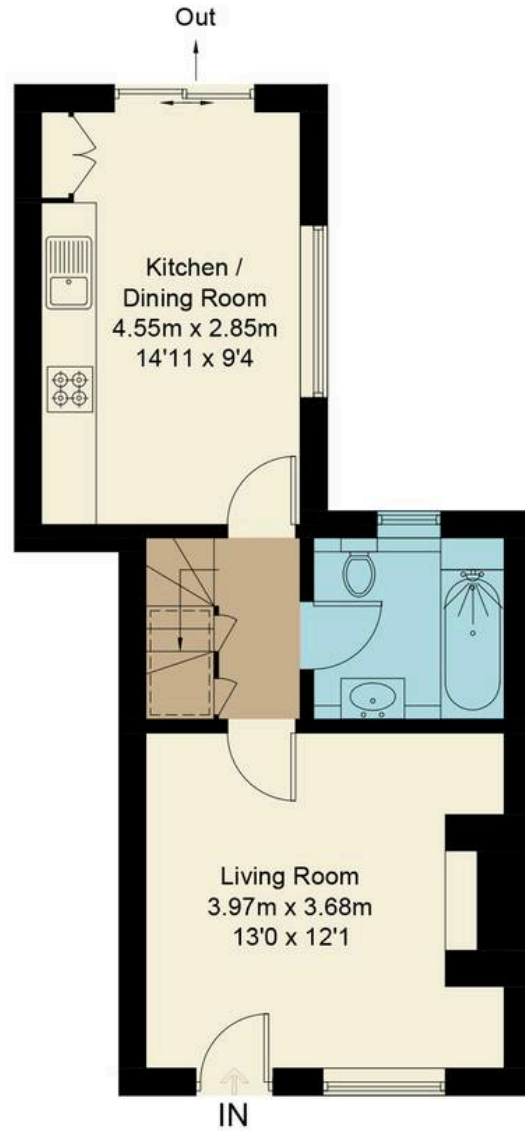




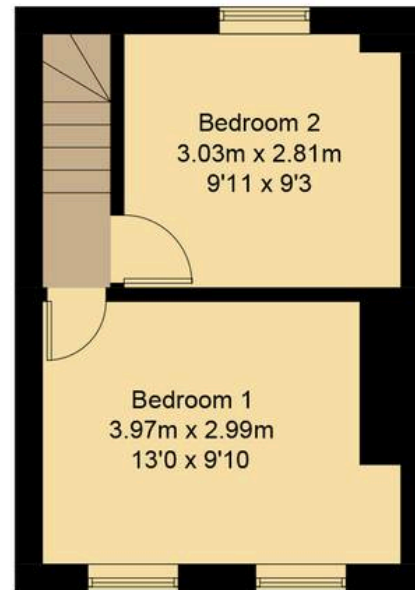
 = Reduced headroom below 1.5m / 5'0

# Pound Cottage, OX11

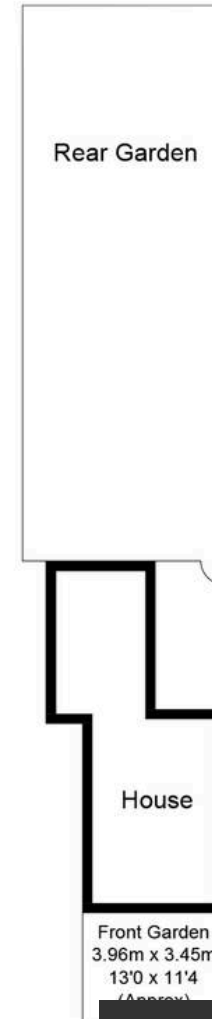
Approximate Gross Internal Area = 59.8 sq m / 644 sq ft



**Ground Floor**



**First Floor**



Floor plan produced in accordance with RICS Property Measurement Standards.  
© Mortimer Photography. Produced for Hodsons.  
Unauthorised reproduction prohibited. (ID1128991)



220 Broadway, Didcot  
Oxfordshire, OX11 8RS  
T: 01235 511406  
E: didcot@hodsons.co.uk  
www.hodsons.co.uk