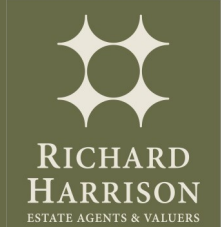




Limehurst Avenue | Loughborough | LE11 1PE

Asking price £169,950



Limehurst Avenue |  
Loughborough | LE11 1PE  
Asking price £169,950

Offering outstanding value for money and situated a few minutes from the heart of the town centre and train station, this three bedroom home is ideal for those wishing to modernise and create a home to their own tastes. The deceptively well proportioned rooms are set over two floors with an entrance hall, lounge and dining kitchen, whilst a first floor leads to three bedrooms and bathroom. The garden is a good size and there is on street permit parking nearby.

- Mid Town House
- A Few Minutes from Shops
- Three Bedrooms
- Lounge & Dining Kitchen
- Ideal FTB or Investment
- Town Centre Location
- Short Distance to Train Station
- First Floor Bathroom
- Permit Parking Nearby
- Viewing a Must!

Entrance Hall

Lounge

Dining Kitchen

First Floor

Bedroom 1

Bedroom 2

Bedroom 3

Bathroom

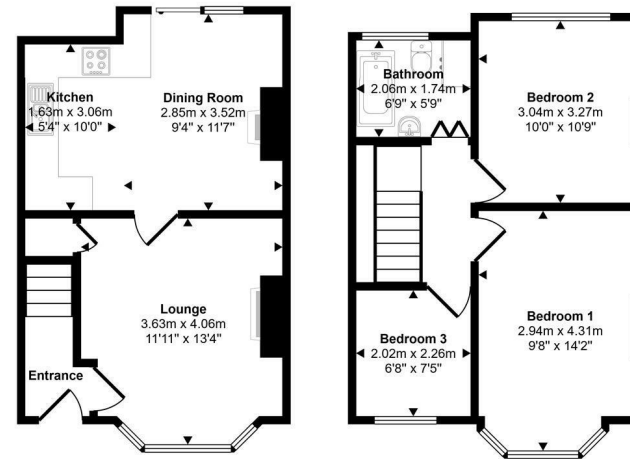
Outside

The Area

Extra Information



Approx Gross Internal Area  
71 sq m / 759 sq ft



This floorplan is only for illustrative purposes and is not to scale. Measurements of rooms, doors, windows, and any items are approximate and no responsibility is taken for any error, omission or mis-statement. Icons of items such as bathroom suites are representations only and may not look like the real items. Made with Made Snappy 360.

Energy Efficiency Rating		Current	Potential
Very energy efficient - lower running costs			
(92 plus)	A		
(81-91)	B		
(69-80)	C		
(55-68)	D		70
(39-54)	E	54	
(21-38)	F		
(1-20)	G		
Not energy efficient - higher running costs			
England & Wales		EU Directive 2002/91/EC	

16 Churchgate  
Loughborough  
Leicestershire  
LE11 1UD

01509 977 889  
sales@richard-harrison.co.uk